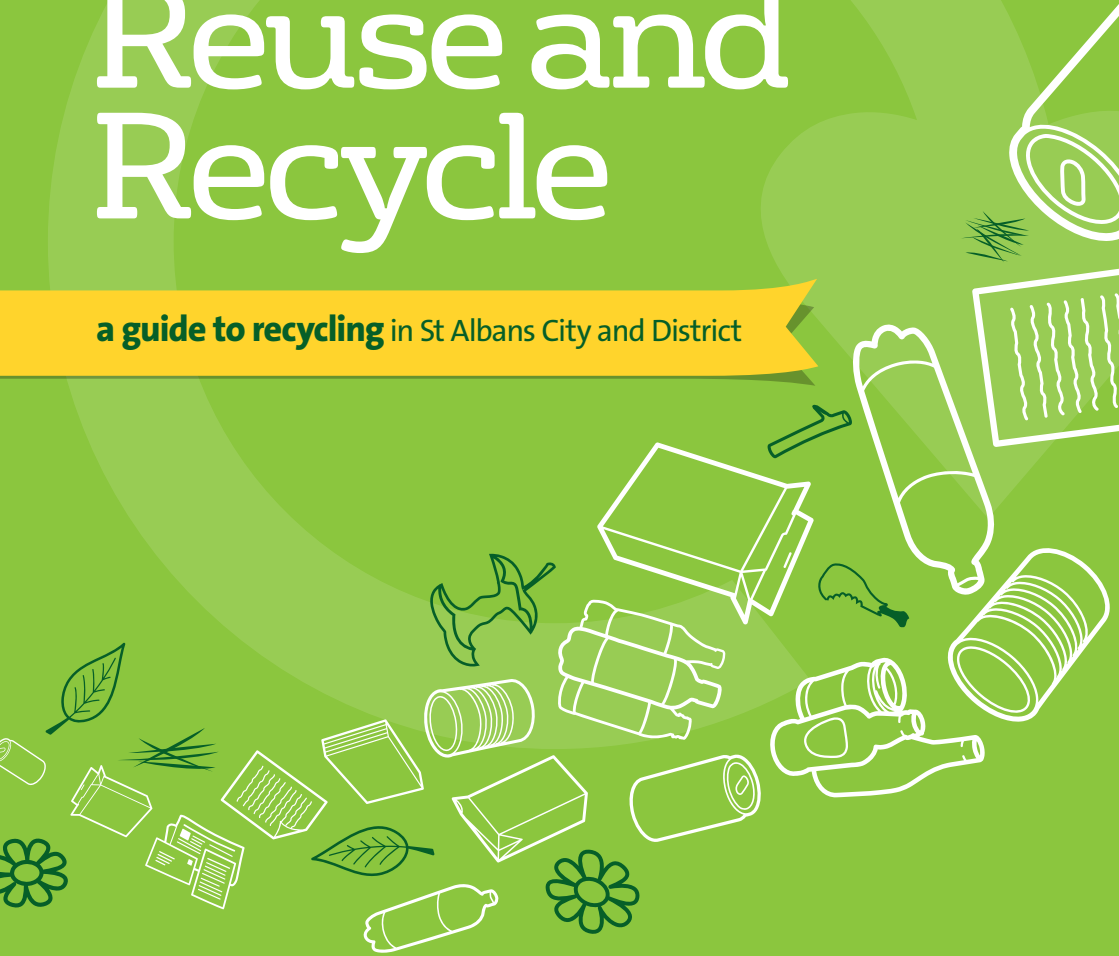


Reduce, Reuse and Recycle

a guide to recycling in St Albans City and District



Working in partnership

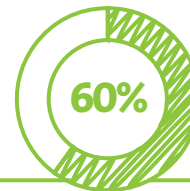


Introduction

We'd like St Albans District to be a shining example of community recycling. Together with our partner Veolia, we are recycling over 60%* of the District's rubbish and aim to increase this even further. Recycling, composting and reducing your waste is easy and can make a big difference to the environment.

When rubbish is buried in landfill it releases harmful gases and liquids. It also means that precious resources that could otherwise be turned into new products are wasted. Throwing waste into landfill costs over £100 per tonne. By recycling more we can also save money, which can be used for other important things.

St Albans City and District Council is working with Veolia to provide all households in the District with a comprehensive multi-material recycling service. We're working together to make it as easy as possible for you to recycle.



Need more information?

Visit www.stalbans.gov.uk/recycling Email wastemanagementservices@stalbens.gov.uk Call 01727 809019

Recycling at Home

What?

All houses have a fortnightly collection of mixed recycling with a separate paper and card collection. We also collect small electrical items and textiles weekly.

Why?

Recycling from home is easy and convenient and will help you make a big difference to the environment.

What happens to my recycling?

We collect your recycling in a vehicle with a split compartment: one for paper and cardboard, and one for mixed recycling.

Paper and cardboard is more valuable when collected separately because it can be recycled into better quality paper and cardboard.

This recycling is sent to a materials recycling facility. Once there, the items pass through several types of machinery that sort through all the different materials. This means less time spent sorting by residents and crews, subsequently more recycling can be collected quicker, and at a lower cost.

The recycling we collect can be turned back into bottles, paper and card, or transformed into other things, like jumpers, insulation and even picnic tables!

Some people recycle from the kitchen but forget the waste from other rooms of the house. Don't forget to recycle bottles and aerosol cans from the bathroom and bedrooms too!

Small electricals

Weekly collection

✓ Yes please

Please keep separate in carrier bags and put next to your bins on collection day.

- ✓ Batteries
- ✓ Toasters
- ✓ Hairdryers and straighteners
- ✓ Mobile phones
- ✓ Digiboxes
- ✓ Irons
- ✓ Kettles

✗ No thanks

- ✗ TVs
- ✗ Computers
- ✗ Washing machines
- ✗ Light bulbs



Textiles

Weekly collection

✓ Yes please

Please keep separate in carrier bags and put next to your bins on collection day.

- ✓ Worn or torn clothing
- ✓ Handbags
- ✓ Pillowcases and sheets
- ✓ Paired shoes

✗ No thanks

- ✗ Duvets
- ✗ Pillows
- ✗ Cushions
- ✗ Rugs, mats and carpets
- ✗ Rubbish



Plastics, cans, foil, glass bottles and jars

Fortnightly collection

✓ Yes please

Remember to rinse out contents.

- ✓ All plastic bottles, trays, pots and tubs
- ✓ Fruit punnets
- ✓ Food and drinks cans and tins
- ✓ All empty aerosols
- ✓ Kitchen foil
- ✓ All glass bottles and jars
- ✓ Shampoo bottles

✗ No thanks

- ✗ Light bulbs
- ✗ Spectacles
- ✗ Plate glass
- ✗ Pyrex glass
- ✗ Drinking glasses
- ✗ Plastic bags
- ✗ Cellophane
- ✗ Polystyrene
- ✗ Film wrapping
- ✗ Mirrors and crockery

If you are unable to accommodate a wheeled bin, we will provide a recycling box for mixed recycling.



If you live in a flat please check the information on top of the bin to see which recycling items go inside.

Paper and card

Fortnightly collection

✓ Yes please

- ✓ Cardboard packaging and flattened boxes
- ✓ Greetings cards (plain)
- ✓ Shredded paper
- ✓ Newspapers and magazines
- ✓ Junk mail, leaflets and brochures (remove plastic packaging)
- ✓ Envelopes (including window)
- ✓ Catalogues and directories
- ✓ Paperback books
- ✓ Cardboard packaging
- ✓ Toilet roll and kitchen roll tubes
- ✓ Ready meal sleeves
- ✓ Cereal boxes

✗ No thanks

- ✗ Carrier bags
- ✗ Greasy, waxed or shiny wrapping paper
- ✗ Tetra Pak cartons (take to recycling area at Waitrose)
- ✗ Dirty, greasy takeaway pizza boxes
- ✗ Polystyrene/insulating packaging - esp from meal prep boxes - Hello Fresh, Gusto etc



Please put the right items in the right bin or box. This will mean we can put your recycling to the best possible use.

Food Waste

What?

We collect food waste from houses and flats every week in either your kerbside caddy or communal food waste bin.

Why?

Every year, we throw away seven million tonnes of food and drink from our homes. In landfill, this waste will take many years to decompose, and produce harmful greenhouse gases in the process. If you put it in your brown bin it may sit there for up to two weeks, which can lead to pests and nasty smells. It is much better all round for your food waste to be collected in your kerbside caddy.

What happens to my waste?

Food waste is taken to a facility that breaks it down to produce renewable energy and biofertiliser in a much shorter amount of time.

Caddy liners

Please wrap your food waste in paper, biodegradable caddy liners, or even old plastic bags! The facility that breaks down the food waste can remove plastic bags at the start of the process. Make sure you don't use black bags, and remember any other plastic (e.g. trays and bottles) must not be put in your food waste caddy.



Communal bin for flats

Food waste caddy for houses

For more information on how to reduce your food waste, visit www.lovefoodhatewaste.com

Need more information?

Visit www.stalbans.gov.uk/recycling Email wastemanagementservices@stalbands.gov.uk Call 01727 809019

Garden waste - opt-in subscription service

What?

The garden waste collection service is an opt-in subscription service. Each subscription year is 1 July - 30 June. For more information please see www.stalbans.gov.uk/garden-waste-subscription-service

Why?

If you don't want to compost your garden waste at home, you can subscribe to the service and we will collect it for composting. Garden waste takes a long time to decompose in landfill and is also very costly.

What happens to my garden waste?

Your garden waste is taken to a local composting facility. Here it is shredded, heated and turned through a series of bays to kill pathogens and weed seeds and break down the material into compost. It is used for farming and agriculture.

Please do not put food waste in this bin. Food waste is collected weekly in your kerbside caddy. See the opposite page.



Garden waste

Fortnightly collection

✓ Yes please

- ✓ Grass cuttings, leaves and weeds
- ✓ Tree, shrub and rose prunings
- ✓ Small branches
- ✓ Cut flowers

✗ No thanks

- ✗ Soil, stones and turf
- ✗ Hardcore
- ✗ Treated timber
- ✗ Paper and card
- ✗ Food waste
- ✗ Plastic flower pots and trays



Household Waste Recycling Centres

There are three Household Waste Recycling Centres (HWRCs) in St Albans City and District, which are operated by Hertfordshire County Council. They accept a wide range of materials for recycling and are for household waste only. See www.wasteaware.org.uk for locations, opening times, accepted materials, and live traffic cameras to check the queue.

Recycling Banks

Where?

The Council manages a number of recycling sites across the District, and they are a popular way of recycling.

See our website to find your nearest site, and check what items it accepts (not all items are accepted at every site).

What?

paper	cardboard	books	food tins & drink cans
clothes	shoes	Tetra Pak	glass bottles & jars
small appliances	household plastic packaging		

How?

When using the Recycling Banks please:

X DON'T leave any items that cannot be recycled at the recycling sites. People leaving items such as TVs, ironing boards, lawn mowers and mattresses at the banks are liable for prosecution for fly-tipping.

✓ DO help us keep our neighbourhoods tidy by taking anything that can't be recycled at the banks home with you. This includes plastic bags and cardboard boxes.

Need more information?

Visit www.stalbans.gov.uk/recycling Email wastemanagementservices@stalbens.gov.uk Call 01727 809019

General Waste

Any waste that can't be recycled goes in the general waste bin.



X No thanks

- X Extra bags left by the side of the bin
- X Rubble
- X Paint
- X Electrical items and batteries
- X Furniture and soft furnishings (Furniture and soft furnishings)

Real Nappies

We've teamed up with a host of washable 'real nappy' suppliers to offer Hertfordshire residents an exclusive 15% discount off a huge range of reusable nappies, accessories and other eco-living products. We also have loads of advice to help you find the best nappies for your baby. To see the full details of the scheme search for Herts Reusable Nappies.

An average baby uses a tonne of disposable nappies in his or her lifetime. Studies suggest that the plastics and gels in these nappies could take up to 500 years to break down.

To apply for your 15% reusable nappy discount visit www.hertfordshire.gov.uk/reusablenappies

Bulky Waste

If you need to dispose of items that can't be collected at the kerbside we can collect them. We make a charge for this service.

What?

We collect items such as washing machines, sofas and mattresses. We can't collect hazardous waste (e.g. plasterboard or asbestos). Please note, if your booking contains soft furnishings, your items may be picked up over several collections. This is to comply with new government guidelines for the separate collection of soft furnishings.



Our website has further details of what can be collected and how much it will cost.



Look out for our Real Nappy Guide which provides more information

What other information do I need to know?

When should I put out my waste and recycling for collection?

Please present your containers on the boundary of your property by 6am on your collection day. Please refer to your calendar or our website if you are unsure which day that is.



I live in a house, but don't have all the bins in this leaflet. What do I do?

Those properties not suitable for wheeled bins are issued with purple refuse sacks and are limited to three sacks per fortnight. These provide the same capacity as the wheeled bin used by the majority of households. No excess waste will be collected, so please ensure all your refuse is in the brown wheeled bin/purple sacks provided.



My collection was missed, what should I do?

Please make sure that your bins are clearly accessible for our team and not blocked by parked cars or other obstructions. If the right things were in the right bin, bag or box, and your collection day was less than two days ago, please report it using the contact details overleaf.

I find it difficult to move my containers to the boundary. Can you help?

If, because of age or disability, you cannot move your containers to the boundary please email wastemanagementservices@stalbens.gov.uk or call 01727 809019 to request an assisted collection.

How often is my waste and recycling collected?

Houses – refuse (in brown bins or purple bags) is collected on the alternate week to your black and green wheeled bins and paper and card box. Food waste is collected every week, as are textiles and small electrical items.
Flats – mixed recycling with separate paper and card is collected fortnightly. Everything else is collected weekly.



I struggle to contain my waste in the containers provided. Is there anything you can do?

Please check to make sure you are recycling all the things in this leaflet in the containers you have been given, as well as using the recycling and HWRC sites. If you still have too much waste, please contact us for advice.



Each UK family uses an average of 500 glass bottles and jars annually. It's not known how long glass takes to break down, but archaeologists still find 3,000-year-old glass in excavations. Better to recycle it!

4.5 million tonnes of edible food is waste every year in the UK

If all cans in the UK were recycled, we would need 14 million fewer dustbins.

An empty cola can thrown in the bin will look the same in 100 years. If it's recycled, it'll be ready to use again in six weeks!

Extending the life of clothes by 9 months would reduce their carbon, water and waste footprints by 20-30%

If you would like to arrange a Recycling Officer to come and talk to your community group, school or Residents' Association, please contact us.

The average family could save £60 a week by wasting less food

Thank you for recycling. We can't do it without you.

Did you know?

Each tonne of recycled paper can save 17 trees.

It takes 50 times the energy a single battery gives out, just to make it in the first place.

You can find out where your recycling goes by visiting [WasteAware pages of hertfordshire.gov.uk](http://WasteAware.hertfordshire.gov.uk)





Visit
stalbans.gov.uk/recycling
or use your **My St Albans** portal

Contact us



Email
wastemanagementservices@stalbans.gov.uk



Call **01727 809019**
between 8.45am and 5pm Mon-Fri

Working in partnership

