

# Community NEWS



SPRING 2017



## WORK STARTS ON NEW MUSEUM

**X** Work to create a spectacular £7.75 million Museum and Art Gallery in St Albans Town Hall has begun.

The works include excavation for a basement gallery. An archaeologist is monitoring the excavations on the look out for anything of historical interest.

Over 90% of the funding has been secured to transform the Grade II\* listed building into a major cultural attraction.

Local charity, St Albans Museums and Galleries Trust\* is

spearheading the fundraising campaign. For a £250 donation, you can have your name, or that of a loved one, engraved on limited edition oak panels in the museum.

Many of the oak panel donations (£200,000 so far) are being made in memory of loved ones or as gifts to children and grandchildren.

To apply, please contact [georgina.bawden@stalbanmgrtrust.org.uk](mailto:georgina.bawden@stalbanmgrtrust.org.uk) (01727 296148), or see [www.honoursboard.org.uk](http://www.honoursboard.org.uk).

### Love paperless billing?

**X** You can now sign up to get your council tax or business rates bill online. Check your payments and instalment plans, from the comfort of your home or office, at any time of day. All you need is your account number and unique key code printed on your latest bill or reminder notice. See [www.stalbans.gov.uk/citizenaccess](http://www.stalbans.gov.uk/citizenaccess).



\*Charity registration no. 1051868.

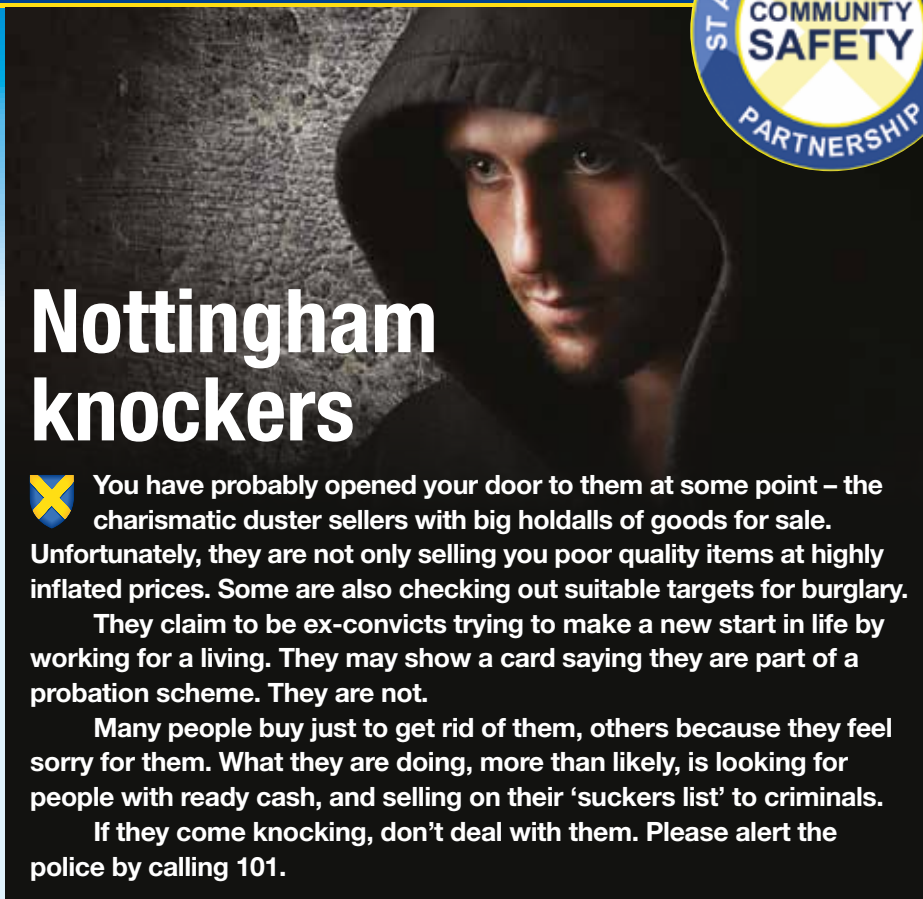
SEE CENTRE PAGES

## Your Council Tax Explained



Community News is published by St Albans City & District Council  
[www.stalbans.gov.uk](http://www.stalbans.gov.uk)





# Nottingham knockers

**X** You have probably opened your door to them at some point – the charismatic duster sellers with big holdalls of goods for sale. Unfortunately, they are not only selling you poor quality items at highly inflated prices. Some are also checking out suitable targets for burglary.

They claim to be ex-convicts trying to make a new start in life by working for a living. They may show a card saying they are part of a probation scheme. They are not.

Many people buy just to get rid of them, others because they feel sorry for them. What they are doing, more than likely, is looking for people with ready cash, and selling on their 'suckers list' to criminals.

If they come knocking, don't deal with them. Please alert the police by calling 101.



## **X** Easter School Holidays (3-13 April)

Our play leaders will be co-ordinating fun and games in 15 parks across the District. Join in for FREE! Details at [www.stalbans.gov.uk/playintheparks](http://www.stalbans.gov.uk/playintheparks) or contact [alex.varran@1life.co.uk](mailto:alex.varran@1life.co.uk), (also on during the Summer Holidays).

## HERTS BIG WEEKEND

Saturday 1st & Sunday 2nd April 2017

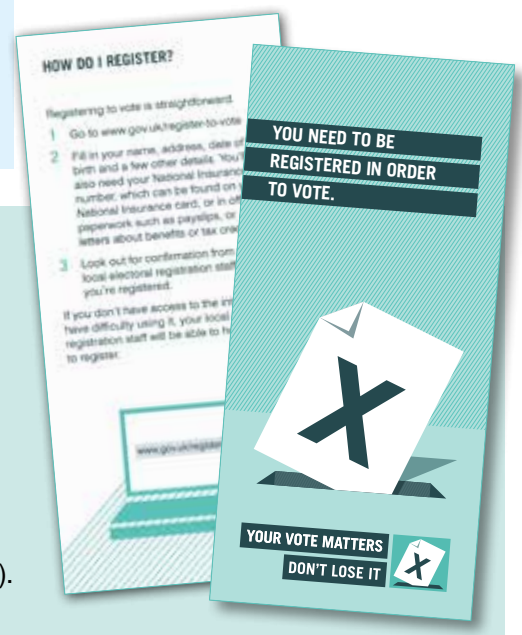
## **X** Sat 1 and Sun 2 April

During English Tourism Week, Hertfordshire residents get the chance to enjoy an amazing day out for FREE as part of the Herts Big Weekend! See [www.hertsbigweekend.co.uk](http://www.hertsbigweekend.co.uk) for details.



# Rough sleepers

**X** If you are concerned about someone you've seen sleeping rough in the District, you can call Open Door on 01727 859113 or complete our rough sleeper referral form. Just search for 'Community Safety' on the Council's website.



## YOUR VOTE MATTERS

### DON'T LOSE IT



**X** Hertfordshire County Council elections take place on Thursday 4 May. You must be registered in order to vote.

The deadline for getting your registration application in is Thursday 13 April. Register online at [www.gov.uk/register-to-vote](http://www.gov.uk/register-to-vote).

If you can't attend your polling station, you can still apply to vote by post, or appoint a proxy to vote on your behalf. The deadline for new postal vote applications is 5pm on Tuesday 18 April, and for new proxy vote applications, 5pm on Tuesday 25 April. Forms can be printed from [www.yourvotematters.co.uk](http://www.yourvotematters.co.uk) (or contact the Elections team on 01727 819294).

[www.stalbans.gov.uk/elections](http://www.stalbans.gov.uk/elections).



# WHAT'S ON

The Museum of St Albans is now closed while we develop the new museum and gallery at the Town Hall.

## at the museum

Verulamium Museum, St Michael's Street, St Albans, AL3 4SW.  
[www.stalbansmuseums.org.uk](http://www.stalbansmuseums.org.uk) 01727 751810

All children must be accompanied by an adult. Museum entry charge for non-residents.

### Tots Tales\*

Wed 8 Mar, 12 Apr, 10 May.

10.30-11.30am and 1.30-2.30pm. Age 2-4.  
£2. Join us for a story, craft activity and museum hunt.



### Crafty Capers

Sat 25 March, 2-4pm.

Age 3+. £1.50. Mother's Day weekend.  
Make a special card.

### Paper Engineering\*

Tues 11 April, 10.30am-3pm. £15.

Learn to make pop-ups with popular  
illustrator and paper engineer John O'Leary.

### Ask an Archaeologist comedy night\*

Friday 19 May, 8pm.

Age 16+. £7. As part of the Museums at Night festival, comedian Paul Duncan McGarrity brings his archaeological expertise to this entertaining evening.



### Broken Objects


Saturday 20 May, 10am-4pm. Free.

Artist Abi Spendlove reflects on the significance of broken objects – visitors' own and those in the museum collections.

*\*Limited places – advance booking strongly advised.*



## New Harpenden leisure facilities

 The Council is working on plans to breathe new life into Harpenden's leisure and cultural facilities serving the north of the District.

The idea is to bring all the sports facilities under one roof, and to create a beautiful new cultural centre on the site of the gym in Rothamsted Park. More information at [www.stalbans.gov.uk/harpendenleisure](http://www.stalbans.gov.uk/harpendenleisure).



## Get funding for your group!

 Local voluntary and community groups can apply for grants from £500 to £5,000.

Applications to the Council's £70,700 Community Grants Fund, will open in April for eight weeks. Past projects include disability equipment for Harperbury Bowls Club, a Big Lunch school holiday project, and a book scheme at a local food bank. Terms and conditions apply. More information at [www.stalbans.gov.uk/communitygrants](http://www.stalbans.gov.uk/communitygrants).

# Your Council Tax explained

## Your total bill includes Council Tax for:

- St Albans City and District Council • Herts County Council
- Herts Police and Crime Commissioner • Town and Parish Councils

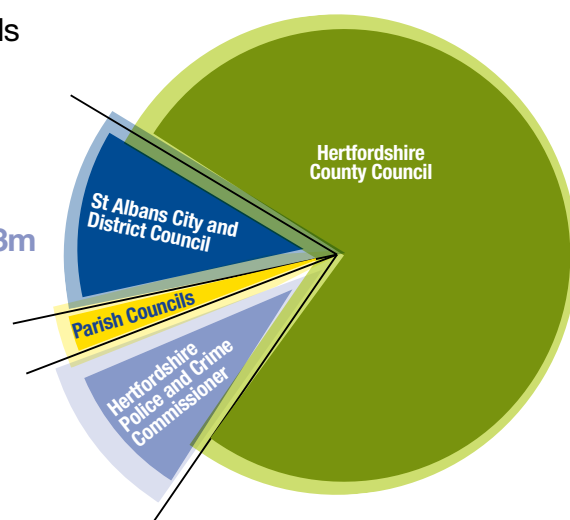
## For every £1 you pay in Council Tax

Hertfordshire County Council will get **77p Total £76.2m**

St Albans City and District Council will get **11p Total £10.4m**

Hertfordshire Police and Crime Commissioner will get **9p Total £9.3m**

Parish Councils will get **3p Total £2.6m**



## On average, you will pay just **£3.27** a week for all the services provided by your District Council including:

- Refuse and recycling services
- Parks, play areas, leisure centres and sports activities
- Street cleaning
- Markets
- Tackling crime and nuisances like fly-tipping, noise and dog mess
- Special events and festivals
- Museums
- Elections
- Planning and building control
- Car parking and parking control
- Housing and benefit advice
- Sustainability initiatives
- Food, health and safety inspectors

## Council Commitments

- Protecting the vulnerable and delivering for families
- Planning for the future
- Developing business and the visitor economy
- Delivering cultural, sports, leisure and heritage facilities
- Keeping the District clean, green, healthy and safe
- Ensuring value for money and outstanding customer service

## How Council Tax is calculated

The Council's funding comes from a number of sources including Council Tax. The Council's gross expenditure of £29.9m is the main determinant of the level of Council Tax after allowing for expected income.

Expenditure and Income Summary	2016/17		2017/18	
	£m	Council Tax Band (D) £	£m	Council Tax Band (D) £
St Albans City and District Council budget expenditure	£29.0m	£476.52	£29.1m	£475.92
PLUS contribution to reserves	£0.9m	£15.13	£0.8m	£12.79
<b>Total Gross Expenditure for Council Activities</b>	<b>£29.9m</b>	<b>£491.65</b>	<b>£29.9m</b>	<b>£488.71</b>
LESS income from fees, charges, sales, rent, grants	-£12.6m	-£207.32	-£13.9m	-£227.09
<b>St Albans City &amp; District Council net budget</b>	<b>£17.3m</b>	<b>£284.33</b>	<b>£16.0m</b>	<b>£261.62</b>
<b>LESS funding from elsewhere</b>				
Central Government	-£7.0m	-£115.23	-£5.4m	-£88.39
Balance transferred from Collection Fund	-£0.1m	-£0.82	-£0.2m	-£3.27
<b>Total funding from elsewhere</b>	<b>-£7.1m</b>	<b>-£116.05</b>	<b>-£5.6m</b>	<b>-£91.66</b>
<b>Council Tax – St Albans City &amp; District Council</b>	<b>£10.2m</b>	<b>£168.28</b>	<b>£10.4m</b>	<b>£169.96</b>
<b>PLUS</b>				
Parish Precepts	£2.4m	£39.75	£2.6m	£42.06
Hertfordshire County Council Precept	£72.2m	£1,186.62	£76.2m	£1,245.83
Hertfordshire Police and Crime Commissioner Precept	£8.9m	£147.00	£9.3m	£152.00
<b>Total Council Tax</b>	<b>£93.7m</b>	<b>£1,541.65</b>	<b>£98.5m</b>	<b>£1,609.85<sup>†</sup></b>

<sup>†</sup> The charge will vary between areas. See box on page 5.

# What you pay

PARISH	BAND	A	B	C	D	E	F	G	H
St Albans City		£1,053.75	£1,229.37	£1,405.00	£1,580.62	£1,931.87	£2,283.12	£2,634.37	£3,161.24
Colney Heath		£1,081.55	£1,261.80	£1,442.07	£1,622.32	£1,982.84	£2,343.36	£2,703.87	£3,244.64
Harpenden Town		£1,087.86	£1,269.18	£1,450.49	£1,631.80	£1,994.42	£2,357.05	£2,719.66	£3,263.60
Harpenden Rural		£1,045.97	£1,220.30	£1,394.63	£1,568.96	£1,917.62	£2,266.28	£2,614.93	£3,137.92
London Colney		£1,086.00	£1,267.00	£1,448.01	£1,629.01	£1,991.02	£2,353.03	£2,715.01	£3,258.02
Redbourn		£1,103.00	£1,286.82	£1,470.67	£1,654.49	£2,022.16	£2,389.83	£2,757.49	£3,308.98
St Michael		£1,045.25	£1,219.46	£1,393.67	£1,567.88	£1,916.30	£2,264.72	£2,613.13	£3,135.76
St Stephen		£1,084.37	£1,265.09	£1,445.82	£1,626.55	£1,988.01	£2,349.47	£2,710.92	£3,253.10
Sandridge		£1,079.51	£1,259.43	£1,439.35	£1,619.27	£1,979.11	£2,338.96	£2,698.78	£3,238.54
Wheathampstead		£1,093.63	£1,275.89	£1,458.18	£1,640.44	£2,004.99	£2,369.53	£2,734.07	£3,280.88

## % Change from last year\*

PARISH	St Albans City & District Council	Hertfordshire County Council*	Hertfordshire Police & Crime Commissioner	Town & Parish Councils
St Albans City	+1%	+1.99% + 3%*	+3.4%	N/A
Colney Heath	+1%	+1.99% + 3%*	+3.4%	-0.11%
Harpenden Town	+1%	+1.99% + 3%*	+3.4%	+7.06%
Harpenden Rural	+1%	+1.99% + 3%*	+3.4%	+6.21%
London Colney	+1%	+1.99% + 3%*	+3.4%	+3.19%
Redbourn	+1%	+1.99% + 3%*	+3.4%	+9.81%
St Michael	+1%	+1.99% + 3%*	+3.4%	+63.79%
St Stephen	+1%	+1.99% + 3%*	+3.4%	+4.84%
Sandridge	+1%	+1.99% + 3%*	+3.4%	+4.81%
Wheathampstead	+1%	+1.99% + 3%*	+3.4%	+6.64%

The County Council precept includes a levy on behalf of Lee Valley Regional Park Authority and the Environment Agency. Details of the levy are available on their website [www.hertfordshire.gov.uk](http://www.hertfordshire.gov.uk).

\*Your council tax payment to Hertfordshire County Council (HCC) has increased by 1.99%, plus a 3% charge for adult social care. Information about spending by HCC, including details of the Social Care Precept, is available at [www.hertfordshire.gov.uk/counciltax](http://www.hertfordshire.gov.uk/counciltax) or a hard copy can be requested by calling 0300 123 4040 or writing to Hertfordshire County Council, PO Box 153, Stevenage, Herts, SG1 2GH.

Further information about Council Tax and how it is calculated is available at [www.stalbans.gov.uk/counciltax](http://www.stalbans.gov.uk/counciltax)



### Charges, and why they vary between areas

St Albans City and District Council also collects Council Tax on behalf of Hertfordshire County Council, Hertfordshire Police and Crime Commissioner and the Town and Parish Councils in the District.

The actual charge for each band varies from area to area. This is because certain services are provided by the District Council in some areas, but by the Town or Parish Council in others.

District, Town and Parish Councils all make different charges (known as special expenses or precepts). The amount you pay depends on where you live. For a more detailed explanation, please visit [www.stalbans.gov.uk/counciltax](http://www.stalbans.gov.uk/counciltax).

# Recycling Reminders

Food waste, small electricals and textiles are collected weekly.

## HOUSES

In some conservation areas there are special arrangements (bags, boxes and purple sacks).

Refuse and recycling is collected on alternate weeks

### Plastics, cans, foil, glass bottles and jars



Please wash and squash plastics. No plastic bags or wrapping. No drinking glasses, light bulbs, spectacles, plate glass or Pyrex-type heat treated glass. No polystyrene.

### Landfill waste



Waste that can't be recycled.

### Paper and card



Place large sheets of card securely with box. No unflattened cardboard, plastic wrapping or Tetra Pak please.

### Garden waste



No soil, rubble or food waste please.

### Food waste



WEEKLY COLLECTION

## COMMUNAL FLATS

Refuse is collected weekly, recycling every other week

### Food waste



WEEKLY COLLECTION

Empty your sink-side caddy into the food waste bins in your communal bin area.

### Plastics, cans, foil, glass bottles and jars



Please wash and squash plastics. No plastic bags or wrapping. No drinking glasses, light bulbs, spectacles, plate glass or Pyrex-type heat treated glass. No polystyrene.

### Paper and card



No unflattened cardboard, plastic wrapping, Tetra Pak or polystyrene please.

### Landfill waste



Waste that can't be recycled.

### Small electricals and textiles

Please keep separate in plastic carrier bags and put out next to your bins on collection day.

Batteries & small electricals



WEEKLY COLLECTION

Textiles



Web [www.stalbans.gov.uk/wasteandrecycling](http://www.stalbans.gov.uk/wasteandrecycling)

Email [wastemanagementservices@stalban.gov.uk](mailto:wastemanagementservices@stalban.gov.uk) Call 01727 809019

Twitter @stalbanCouncil Facebook recycleforstalbandistrict

# **IDLING...** **SWITCH OFF** **FOR CLEANER AIR**



Leaving your engine running when you're parked creates 20 times more pollution than when driving at 30mph. These pollutants are harmful to health, the environment and your pocket.

Let's work together.  
If you're parked...

## **TURN IT OFF.**




## **New stations shuttle bus**

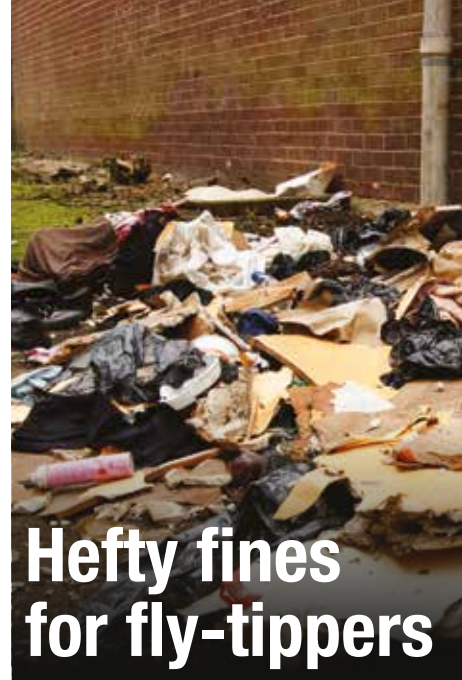
 Hertfordshire County Council has started a new shuttle bus service running between St Albans City and Abbey Stations via the City centre. The Abbey Shuttle timetable coincides with Abbey Line train arrivals and departures. Any profits from the scheme will be reinvested in the route and if successful the one year trial will be extended. The timetable can be downloaded at: [www.intalink.org.uk/uploads/publications/1333.pdf](http://www.intalink.org.uk/uploads/publications/1333.pdf).




## **London Colney walks**

 London Colney is the latest venue for free Hertfordshire Health Walks led by local volunteers.

Choose from a fortnightly short walk (30 minutes), or a weekly longer walk (60 minutes). It's great fun and everyone is welcome. Sign up at [www.hertfordshirehealthwalks.co.uk](http://www.hertfordshirehealthwalks.co.uk) (01992 588433). They also need more walk leaders.



## **Hefty fines for fly-tippers**


 A builder was ordered to pay £2,429 by the courts following a fly-tipping incident in Drop Lane, Bricket Wood.

Although he didn't carry out the fly-tipping himself, he didn't ensure his contractor had a proper waste carrier's licence.

In separate incidents, a St Albans woman was ordered to pay £972 and a Luton man £891 after dumping waste in Sandridge, and at Lye Lane, Bricket Wood.

The Council takes such crime very seriously. If you witness fly-tipping taking place, please call the police on **999** and give as much detail as possible, without putting yourself at risk. If you discover fly-tipped waste after the event, please let the Council know ([a.cleanerdistrict@stalbens.gov.uk](mailto:a.cleanerdistrict@stalbens.gov.uk); **01727 809019**). Thank you for your help.

## **Easter waste and recycling dates**

 Collection crews will be doing their usual collections on Good Friday (14 April).

They won't be working on Bank Holiday Easter Monday (17 April). Collections that week will be one day later than usual, with Monday's collections on Tuesday, Tuesday's collections on Wednesday, and so on. Crews will work on Saturday 22 April to catch up.

# Our foster carers made us Super Heroes.

We need inspirational foster carers for Hertfordshire children. If you have a spare bedroom and the passion to make a difference, then we want to hear from you.

Please call us on **0800 917 0925**

or email: [fostering.recruitment@hertfordshire.gov.uk](mailto:fostering.recruitment@hertfordshire.gov.uk)




Hertfordshire County Council  
[www.hertfordshire.gov.uk/fostering](http://www.hertfordshire.gov.uk/fostering)

[www.facebook.com/hertfordshirefostering](https://www.facebook.com/hertfordshirefostering)  
[@HCCFosterAdopt](https://twitter.com/HCCFosterAdopt)




## Do it online!

 You can do lots of your Council business on our website.

Report a missed recycling collection, pay a bill, or tell us you've moved house, all from the comfort of home, night or day. You can also sign up for your online Council Tax account (see front page), request Council property repairs, apply for Benefits and lots more. Just go to [www.stalbans.gov.uk](http://www.stalbans.gov.uk).

## Big changes from April

 We be providing more of your Council services online and by pre-booked appointment.

As part of the changes, staff will still be on hand to help if you come in but we will no longer offer take-a-ticket services.

There will be self-service computers available for you to use if you don't have online access at home. Just ask if you need help.

## Special educational needs?

 Do you have a child or young person with special educational needs or disabilities?

Hertfordshire County Council's new improved web pages can help you find useful information on short breaks; leisure activities; school leavers; Education, Health and Care Plans and lots more.

See: [www.hertfordshire.gov.uk/localoffer](http://www.hertfordshire.gov.uk/localoffer).



My Council Services App



*Have your say... we welcome anything you want to say about our services.*

We hope you enjoy reading Community News. If you can spare a moment, please email [communications@stalbins.gov.uk](mailto:communications@stalbins.gov.uk) and let us know your views and what else you want us to include.

**St Albans City & District Council**, Civic Centre, St Peter's Street, St Albans, Herts AL1 3JE

**Website:** [www.stalbans.gov.uk](http://www.stalbans.gov.uk) **Email:** [contactus@stalbins.gov.uk](mailto:contactus@stalbins.gov.uk)

**Customer Service Centre opening hours:** Mon-Thurs 8.45am-5pm, Fri 8.45am-4.30pm

**Housing Repairs:** [housingrepairs@stalbins.gov.uk](mailto:housingrepairs@stalbins.gov.uk), 01727 819256

**Refuse & Recycling:** [wastemanagementservices@stalbins.gov.uk](mailto:wastemanagementservices@stalbins.gov.uk), 01727 809019

**Council Tax:** [counciltax@stalbins.gov.uk](mailto:counciltax@stalbins.gov.uk), 01727 819204/819205

**Benefits:** [benefits@stalbins.gov.uk](mailto:benefits@stalbins.gov.uk), 01727 819220

**Planning:** [planning@stalbins.gov.uk](mailto:planning@stalbins.gov.uk), 01727 866100

**Alternative formats:** If you want to receive this newsletter in an alternative format, such as Braille, or in another language, please call 01727 819572. See [www.disabledgo.com](http://www.disabledgo.com) for information about access to local facilities.

**All Other Enquiries:** 01727 866100

 **Twitter:** @StAlbansCouncil

 **Facebook:** Recycle for St Albans District