

## THE CUNNINGHAM HUB

The Cunningham Hub Management Committee will be co-ordinating the out-of-hours community use. The Committee is keen to receive enquiries from voluntary and community organisations which are interested in hiring rooms. Ideas for possible usage include residents association meetings, churches and faith groups, pilates or yoga classes, computer classes, art classes, counselling sessions and emergency first aid courses run by St John's Ambulance but all groups are welcome to enquire.

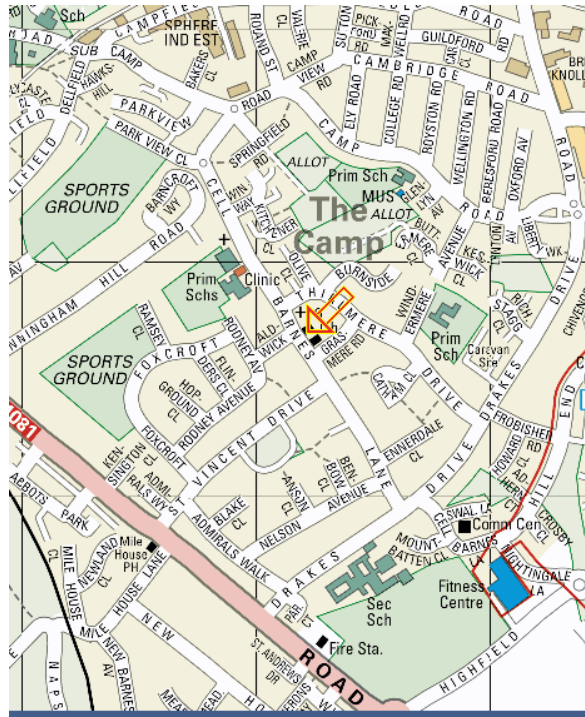
If you would like to know more or wish to register your interest in hiring rooms from Monday 5th of September onwards then please contact :

Tony Bridges, Manager on 01727 841610 or

Email: [butterwickdayservice@hertscc.gov.uk](mailto:butterwickdayservice@hertscc.gov.uk)

Hire tariff available on request.

## The Hub



### The Cunningham Hub.

207 Cell Barnes Lane,

St. Albans,

Hertfordshire.

AL1 5PX

Tel: 01727 841610

## THE CUNNINGHAM HUB

*at the centre of the Cunningham community*

## Welcome to the Cunningham Hub



### The Cunningham Hub.

207 Cell Barnes Lane, St. Albans,

Hertfordshire. AL1 5PX

Tel: 01727 841610

# The Hub:

# Hub Ground Floor:

# Hub First Floor:

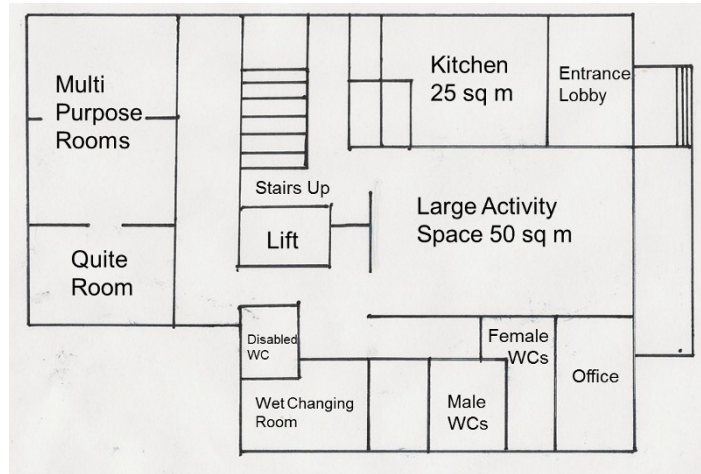
Herts County Council has completed the £1 million refurbishment works to the former Cunningham Library in Cell Barnes Lane. The refurbished building now houses St Albans Day Services and will provide modern services for those adults with a learning disability, living in St Albans and Harpenden, who need daytime activities, care and support, or whose carers need respite.

St Albans Day Service supports people with a wide variety of needs and aims to provide responsive services in a safe, caring and supportive environment, which meets the needs of each individual, promotes independence and encourages choice. The service offers people a variety of opportunities, including work experience, social skills and leisure activities. Amongst the activities available are bowls, cooking, art, crafts, communication, community access, conservation, drama, intensive interaction etc.

In a partnership venture, St Albans City & District Council and Herts County Council have agreed that when the building is not being used by St Albans Day Service some rooms will be available for community use, after 4.30pm each day and from 8.30am to 10pm on Saturdays, from September 2011 onwards. This includes community use of a computer suite.

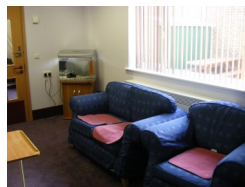
St Albans and District Local Strategic Partnership has set aside funding to help with the development of the Hub as a community centre. It expects that this funding will be used to offset room hire costs for emerging community groups whilst they are becoming established.

It is expected that the building will be mainly used by local groups and that the majority should be able to walk to it although limited car parking will be available.



### Large Activity Space:

Largest activity area in the building with shutter hatch to kitchen area. Capacity 30 excluding Kitchen Area,



### Quiet Room: (on Lower ground)

Small room suitable for quiet reflection with Fish tank, settee and easy chairs. Capacity 8



### Multi-purpose Rooms:

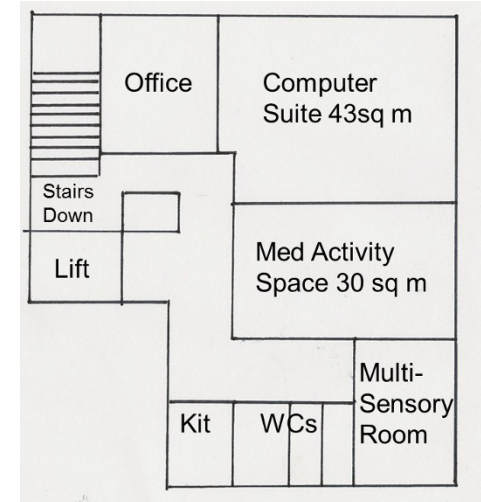
One larger room or divide into two small syndicate rooms. Capacity 15 also on lower ground.



### Kitchen Area:

Well equipped large kitchen with induction hob, sink and food prep surfaces hatch to activity area.

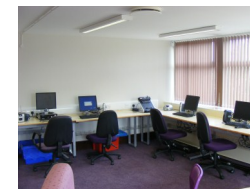
**Disabled toilet and wet room. Male & female toilets.**



The First floor is accessed via stairs or a 13 person accessible lift.

### Computer Suite:

With Smart board and projector. Three computer workstations plus seating for up to 10 with public Wi-Fi access.



**Note:** Offices and Multi-sensory room are private to day Centre. Seating only available overall for 40.



### Medium Activity space:

Meeting room or of capacity for up to 15 people



### Kitchenette:

Small kitchenette suitable for tea and coffee making.

**Male, female & disabled toilets.**