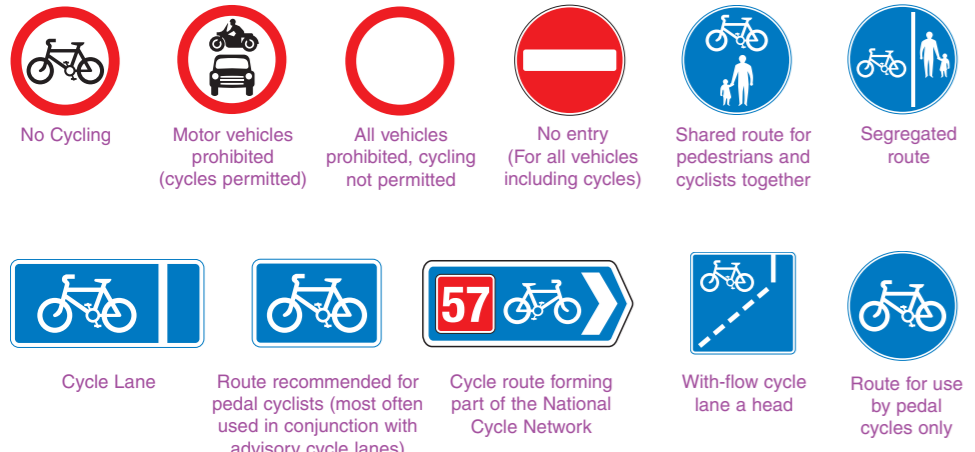


Common signs and symbols

Common road signs and markings that you may come across when cycling through the town



Comments and suggestions

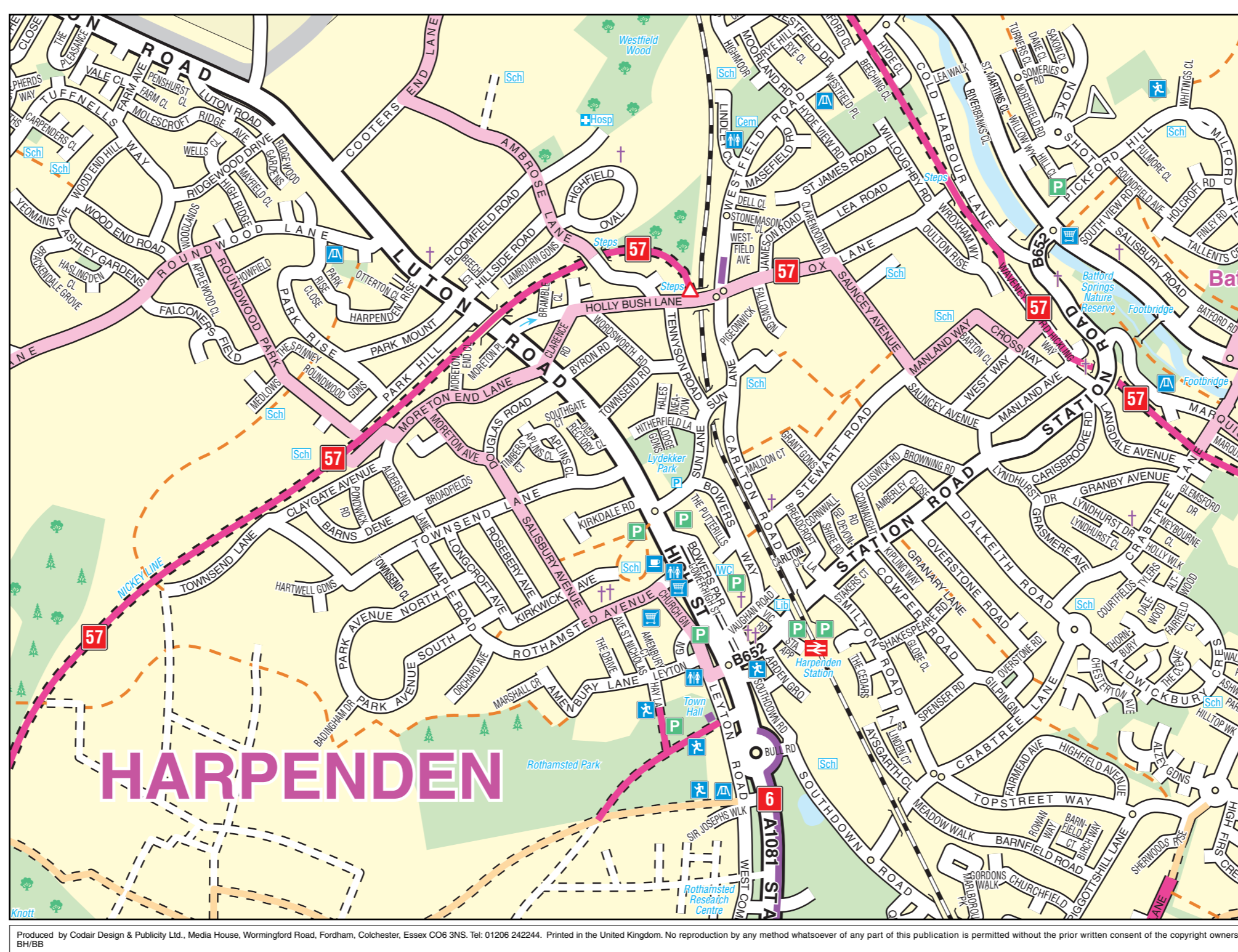
If you have any suggestions for improving cycling provision in the St Albans district or new cycle routes, we would like to hear from you. Please contact us on 01727 819359 or cycling@stalbans.gov.uk or telephone 01727 819570

This map can be downloaded and printed at different scales from www.stalbans.gov.uk/cyclemaps

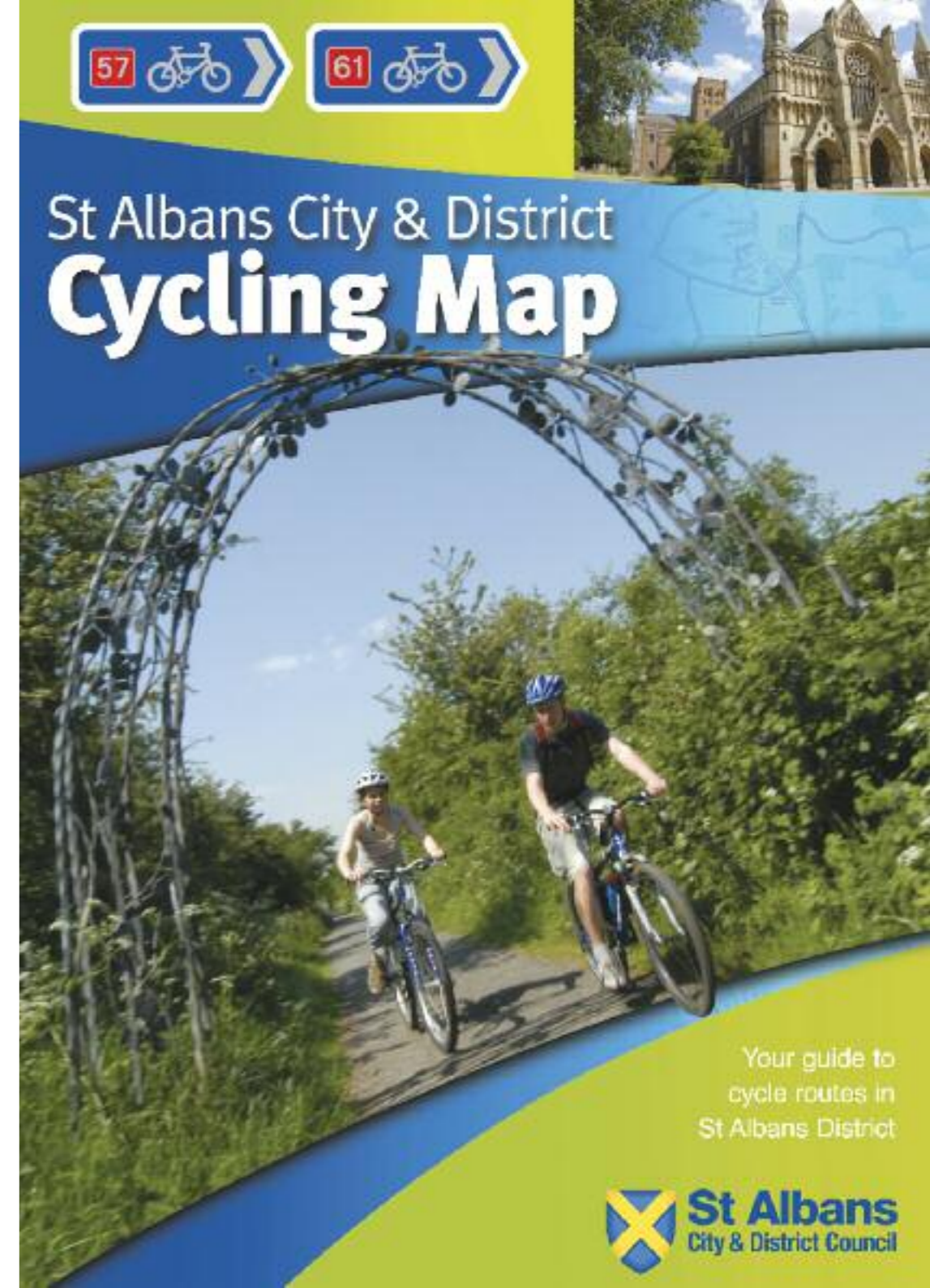
Additional route maps of the Nickey Line (NCN 57) and the Alban Way (NCN 61) are also available at the same webpage.



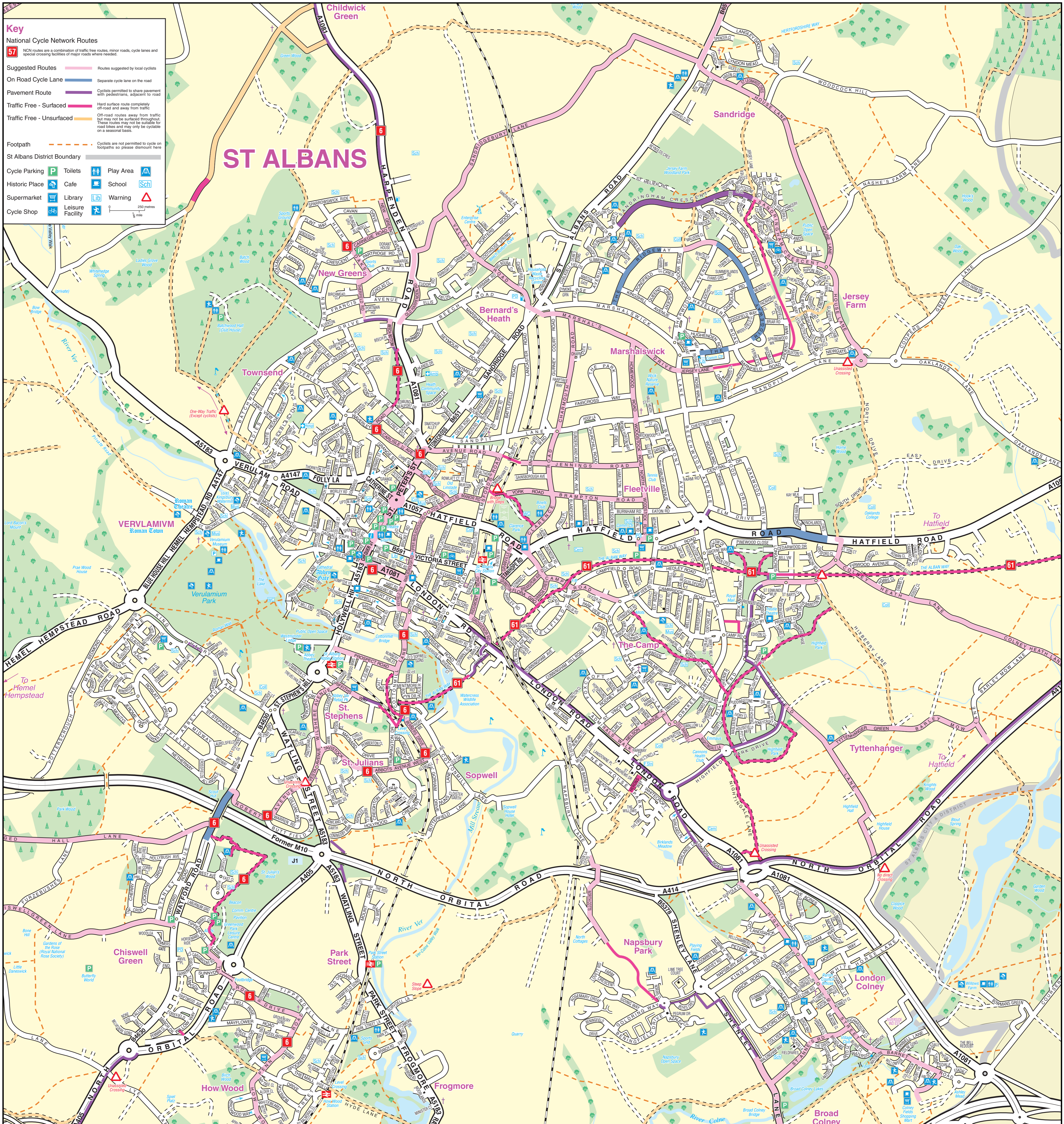
Printed on 100% Recycled Paper Oct 2011



Produced by Collier Design & Publicity Ltd., Media House, Womingtonford Road, Fordham, Colchester, Essex CO6 3NS. Tel: 01206 242244. Printed in the United Kingdom. No reproduction by any method whatsoever of any part of this publication is permitted without the prior written consent of the copyright owners. 011910



Your guide to cycle routes in St Albans District



Key

National Cycle Network Routes
 57 NCN routes are a combination of traffic free routes, minor roads, cycle lanes and special crossing facilities of major roads where needed.

Suggested Routes Routes suggested by local cyclists

On Road Cycle Lane Separate cycle lane on the road

Pavement Route Cyclists permitted to share pavement with pedestrians, adjacent to road

Traffic Free - Surfaced Hard surface route completely off-road and away from traffic

Traffic Free - Unsurfaced Off-road routes away from traffic but may not be surfaced throughout. These routes may not be suitable for road bikes and may only be cycleable on a seasonal basis.

Footpath Cyclists are not permitted to cycle on footpaths so please dismount here

St Albans District Boundary

Facilities: Cycle Parking, Toilets, Play Area, Historic Place, Cafe, School, Supermarket, Library, Warning, Leisure Facility, Cycle Shop.

Scale: 1:50,000