

# Your Council Tax explained

## Your total bill includes Council Tax for:

- Herts County Council
- St Albans City and District Council
- Herts Police and Crime Commissioner
- Town and Parish Councils

## For every £1 you pay in Council Tax

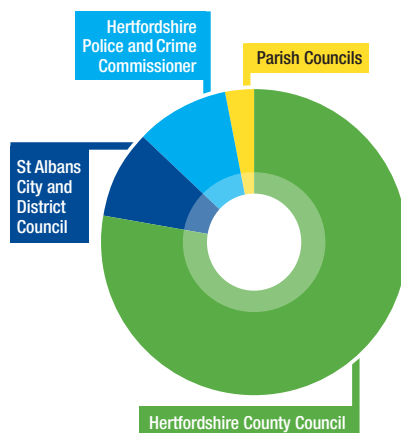
Hertfordshire County Council will get 77p Total £102.3m  
 Hertfordshire Police and Crime Commissioner will get 11p Total £15.2m  
 St Albans City and District Council will get 9p Total £12.6m  
 Parish Councils will get 3p Total £3.5m

On average, you will pay just **£3.77 a week** for all the services provided by your District Council including:

- Refuse and various recycling services
- Parks and leisure services
- Street cleaning
- Museums
- Parking control
- Planning and enforcement
- Housing and benefit advice
- Tackling crime and nuisances like fly-tipping, noise and dog mess
- Elections
- Special events and festivals
- Sustainability initiatives
- Food, health and safety inspectors

Our five key priorities, designed to deliver a viable, happy, inclusive and sustainable community, are to:

- Combat the climate emergency,
- Deliver more social housing,
- Support our local economy,
- Enhance the District's cultural offer,
- Promote equality, inclusion and fairness.



## How Council Tax is calculated

The Council's funding comes from a number of sources including Council Tax. The Council's gross expenditure of £39.7m is the main determinant of the level of Council Tax after allowing for expected income.

Expenditure and Income Summary	2022-2023		2023-2024	
	£m	Council Tax Band (D) £	£m	Council Tax Band (D) £
St Albans City and District Council budget expenditure	£38.0m	£598.91	£39.7m	£622.63
LESS contribution from reserves	-£0.1m	-£1.29	-£0.1m	-£1.52
<b>Total Gross Expenditure for Council Activities</b>	<b>£37.9m</b>	<b>£597.62</b>	<b>£39.6m</b>	<b>£621.11</b>
LESS income from fees, charges, sales, rent, grants	-£20.3m	-£321.01	-£21.0m	-£330.30
<b>St Albans City &amp; District Council net budget</b>	<b>£17.6m</b>	<b>£276.61</b>	<b>£18.6m</b>	<b>£290.81</b>
<b>LESS funding from elsewhere</b>				
Central Government and Business Rates	-£5.3m	-£83.45	-£6.0m	-£94.71
Balance transferred from Collection Fund	-£0.2m	-£2.75	-	-
<b>Total funding from elsewhere</b>	<b>-£5.5m</b>	<b>-£86.20</b>	<b>-£6.0m</b>	<b>-£94.71</b>
<b>Council Tax – St Albans City &amp; District Council</b>	<b>£12.1m</b>	<b>£190.41</b>	<b>£12.6m</b>	<b>£196.10</b>
<b>PLUS</b>				
Parish Precepts	£3.3m	£51.34	£3.5m	£54.26
Hertfordshire County Council Precept	£96.9m	£1,529.31	£102.3m	£1,605.63
Hertfordshire Police and Crime Commissioner Precept	£14.1m	£223.00	£15.2m	£238.00
<b>Total Council Tax</b>	<b>£126.4m</b>	<b>£1,994.06*</b>	<b>£133.6m</b>	<b>£2,093.99*</b>

\* This is the average rate of Council Tax across the District. The actual charge will vary between areas. See box on page 5.

# What you pay

PARISH	BAND	A	B	C	D	E	F	G	H
St Albans City		1,370.34	1,598.73	1,827.12	2,055.51	2,512.29	2,969.08	3,425.85	4,111.02
Colney Heath		1,451.51	1,693.43	1,935.35	2,177.27	2,661.11	3,144.96	3,628.78	4,354.54
Harpenden Rural		1,373.20	1,602.06	1,830.93	2,059.79	2,517.52	2,975.26	3,432.99	4,119.58
Harpenden Town		1,415.28	1,651.16	1,887.05	2,122.92	2,594.68	3,066.45	3,538.20	4,245.84
London Colney		1,411.12	1,646.31	1,881.50	2,116.68	2,587.05	3,057.44	3,527.80	4,233.36
Redbourn		1,424.10	1,661.44	1,898.80	2,136.14	2,610.84	3,085.55	3,560.24	4,272.28
St Michael		1,358.83	1,585.30	1,811.77	2,038.24	2,491.18	2,944.14	3,397.07	4,076.48
St Stephen		1,417.63	1,653.89	1,890.18	2,126.44	2,598.99	3,071.53	3,544.07	4,252.88
Sandridge		1,398.00	1,631.00	1,864.00	2,097.00	2,563.00	3,029.01	3,495.00	4,194.00
Wheathampstead		1,427.60	1,665.53	1,903.47	2,141.40	2,617.27	3,093.14	3,569.00	4,282.80

## % Change from last year

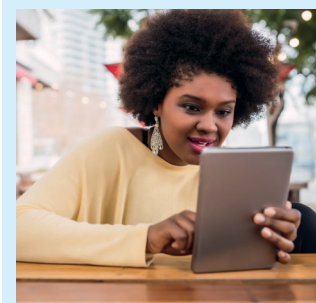
PARISH	St Albans City & District Council*	Special Expenses (see box at bottom of page)	Hertfordshire County Council*	Hertfordshire Police & Crime Commissioner	Town & Parish Councils
St Albans City	2.89%	-4.60%	2.99% +2%	6.73%	-
Colney Heath	2.89%	N/A	2.99% +2%	6.73%	85.32%
Harpenden Rural	2.89%	-	2.99% +2%	6.73%	55.91%
Harpenden Town	2.89%	10.20%	2.99% +2%	6.73%	8.95%
London Colney	2.89%	28.31%	2.99% +2%	6.73%	3.07%
Redbourn	2.89%	13.43%	2.99% +2%	6.73%	-0.10%
St Michael	2.89%	-	2.99% +2%	6.73%	1.65%
St Stephen	2.89%	42.04%	2.99% +2%	6.73%	4.99%
Sandridge	2.89%	8.71%	2.99% +2%	6.73%	1.80%
Wheathampstead	2.89%	18.58%	2.99% +2%	6.73%	14.70%

The County Council precept includes a levy on behalf of Lee Valley Regional Park Authority and the Environment Agency. Details of the levy are available on their website [www.hertfordshire.gov.uk](http://www.hertfordshire.gov.uk).

\* The percentage change on the combined total of General and Special Expenses for St Albans City and District Council is 2.99%.

\* For adult social care authorities, Council Tax bills show two percentage changes: one for the part of the overall change attributable to the adult social care precept (2.00%), and one for the part attributable to general expenditure (2.99%). The percentage change is applied to the full 2022/23 council tax for the County Council (General expenditure + Adult Social Care precept). Information about spending by the County Council is available at [www.hertfordshire.gov.uk/counciltax](http://www.hertfordshire.gov.uk/counciltax); email [contact@hertfordshire.gov.uk](mailto:contact@hertfordshire.gov.uk); telephone 0300 123 4040 or by writing to Hertfordshire County Council, PO Box 153, Stevenage, Herts, SG1 2GH

Further information about Council Tax and how it is calculated is available at [www.stalbans.gov.uk/council-tax](http://www.stalbans.gov.uk/council-tax)



## Charges, and why they vary between areas

St Albans City and District Council also collects Council Tax on behalf of Hertfordshire County Council, Hertfordshire Police and Crime Commissioner and the Town and Parish Councils in the District.

The actual charge for each band varies from area to area. This is because certain services are provided by the District Council in some areas, but by the Town or Parish Council in others.

Town and Parish Councils have the freedom to set their own precepts. The amount you pay depends on where you live.

For more information, please see: [www.stalbans.gov.uk/where-your-council-tax-goes](http://www.stalbans.gov.uk/where-your-council-tax-goes).