

A NEW PEDESTRIAN VISION

We have a vision for this important part of St Albans:

- Create a **family orientated** location to live, work, visit and relax based around a leafy public realm
- Memorable new buildings of **high quality** materials that add to the richness of St Albans' architectural heritage
- **Active frontages** that enliven the street scene with overlooking apartments that provide a sense of community
- Improve **pedestrian connections** in the heart of St Albans with attractive and green car-free routes
- Celebrate the **Quaker Gardens** on Victoria Street with a south-facing cafe, inside-outside landmark pavilion and public space
- An **active landscape** that includes opportunities for pop-up events, choreographed water jets and a Penny Packet Place a new green space on Bricket Road



A new green pedestrian heart:

This diagram shows the new building set within new public spaces and routes, creating a new pedestrian heart with links between the leafy **Bricket Road**, the vibrant **Saint Peter's Street** and the busy **Victoria Street**.



The Quaker Gardens

The Brief

The Architects and Landscape Architects have been asked to submit proposals for the **re-design** of the external treatment of the current City Centre Opportunity Site South (CCOS South) scheme. Specifically to put forward proposals for:

- A landmark **commercial building** on the corner of Victoria Street and Bricket Road.
- A single storey **pavilion** on the South West corner of the site
- Re-design of the external treatment of the whole building, whilst generally respecting the form and massing, height restrictions and **residential** layout of the previously designed scheme.
- A more **active frontage** along Bricket Road.
- An **attractive landscape** setting

NEW GREEN CONNECTED SPACES

Quaker Gardens

The Quaker Gardens are celebrated and expanded to become a larger public place that connects the meeting and reflective spaces. Respectfully illustrating and respecting a layout previously agreed with St Albans Quakers. The public realm surrounding the garden aims to remain sympathetic while gently enhancing the peaceful nature of this space.

Samuel Ryder Promenade

Residential and offices are entered from an appealing green route that connects the Quaker Gardens to Civic Close with lush planting, places to sit and a raised lawn. The space allows opportunities for cultural pop-up events alongside a place where children can play in the choreographed playful water jets.



Family meeting places



01 Flowering Cherry and evergreens along Samuel Ryder Promenade



02 Raised beds with comfortable edges to sit and talk



03 Raised lawn provides an informal place to meet



03 Flowering clovers in the lawn offer nectar for bees



04 Penny Packet Place inspired by St Alban's Samuel Ryder and his famous seeds



04 Penny Packet Place inspired by St Alban's Samuel Ryder and his famous seeds



05 Newly planted trees to reinforce the leafy avenue of Bricket Road



06 South facing cafe with outdoor seating and tables



07 Flexible spaces for pop-up cultural attractions such as outdoor cinema, performances or poetry



08 Seating edge to the meeting space, with incorporation of the Quaker Garden



09 View of the playable water jets, these can be lit, controlled and switched off when required



10 Level changing terrace with lush planting to encourage a diverse biodiversity

A NEW ST.ALBANS LANDMARK

The Landmark

At the junction of Victoria Street and Bricket Road a **commercial building** has been proposed as a dynamic form. The curved façade at lower levels encourages **pedestrian movement** from Victoria Street onto Samuel Ryder Promenade.

The curved glazed facade with vertical limestone fins distinguishes this building from the more rational and ordered form of its residential neighbours. It permits views to the inside during the day and stands as a “**lantern**” in the evening.

Lush green walls separate the commercial building from the adjacent residential block.



Terraced Gardens



View of Bricket Road corner



Bricket Road
Scale 1:250

PLACES FOR EVERYONE

The Pavilion

The Pavilion sits quietly beside the Quaker Gardens. The ‘tree’ within the building and green roof above evoke the natural world and responds to the lush public realm within which it sits. An openable façade allows the inside and outside to merge providing a place to pause, meet and relax.



Inside/Outside Pavilion



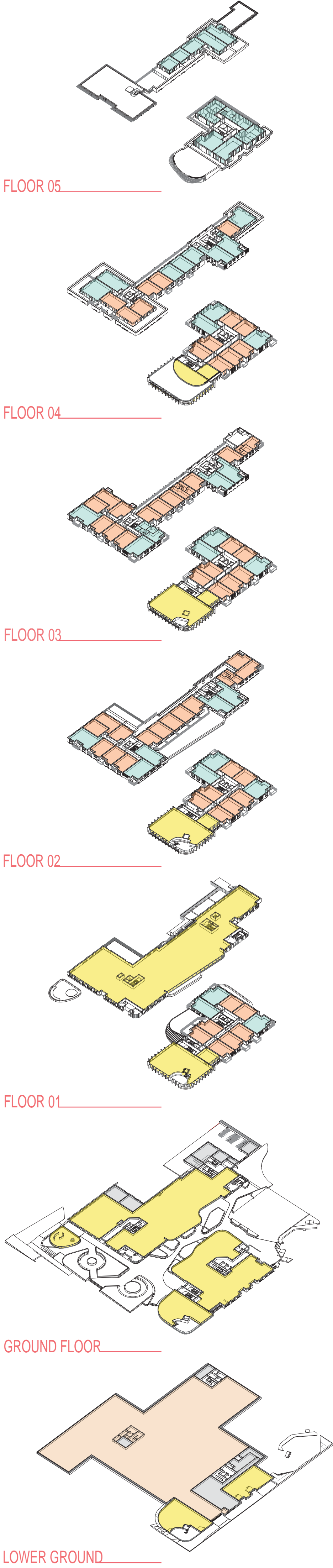
View from Victoria Street



Victoria Street
Scale 1:50

RECONNECTING WITH NATURE

Floor plans



Materials used

1. Hydroponic facade system (green wall)
2. Climbing facade
3. Recessed top storey - grey metal cladding
4. Polyester power coated aluminium curtain wall system
5. Limestone fins
6. Vehicular access to the underground car park

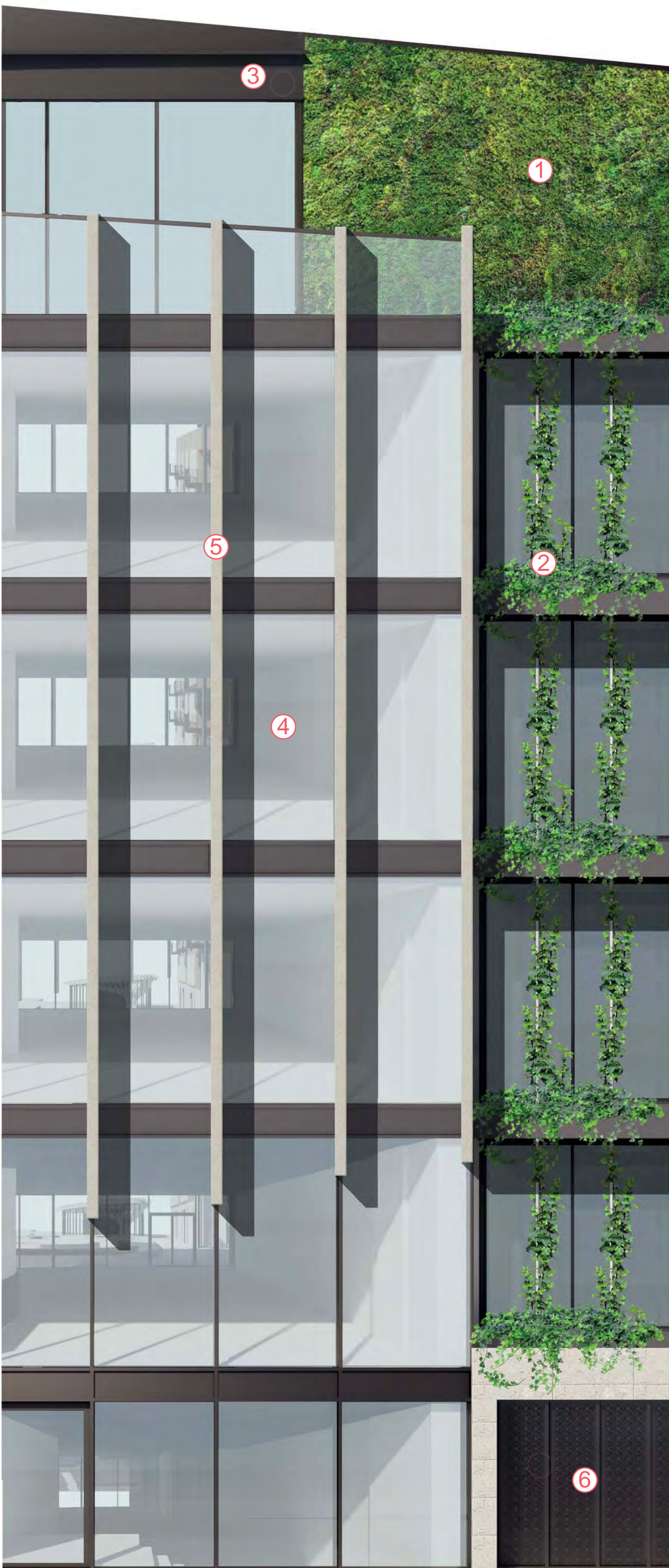


Example of green walls

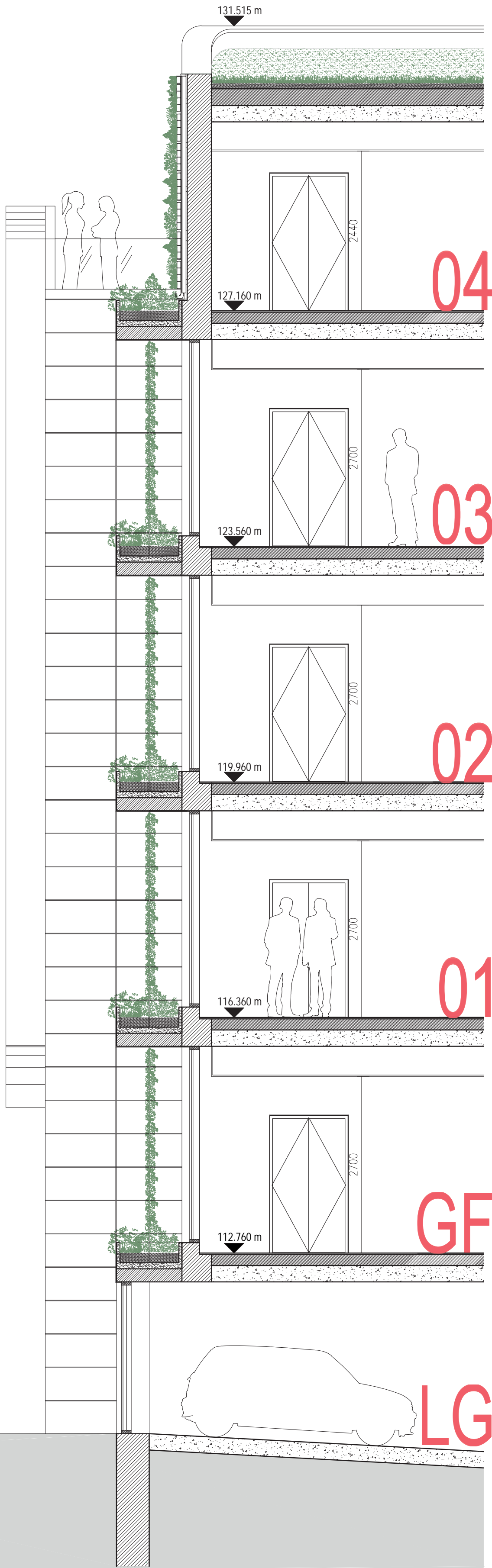


Benefits of green wall

- Air purification
- Noise reduction
- Health & wellbeing
- Heat reduction
- Rain water attenuation
- Biodiversity
- Increasing productivity
- Dust suppression



Bay study
Scale 1:50



LOOKING BACK, LOOKING FORWARD

Mapping of Materials

Originally undertaken as part of an earlier CCOS South planning application. This mapping illustrates the **variety of materials** and finishes that add to the rich tapestry of St Albans.



	Multi brick (orange, brown)		Yellow/buff brick
	Red/dark red brick		White brick/render
	Brown brick		Stone
	Orange/red brick		Tudor
	Pale red brick		Other

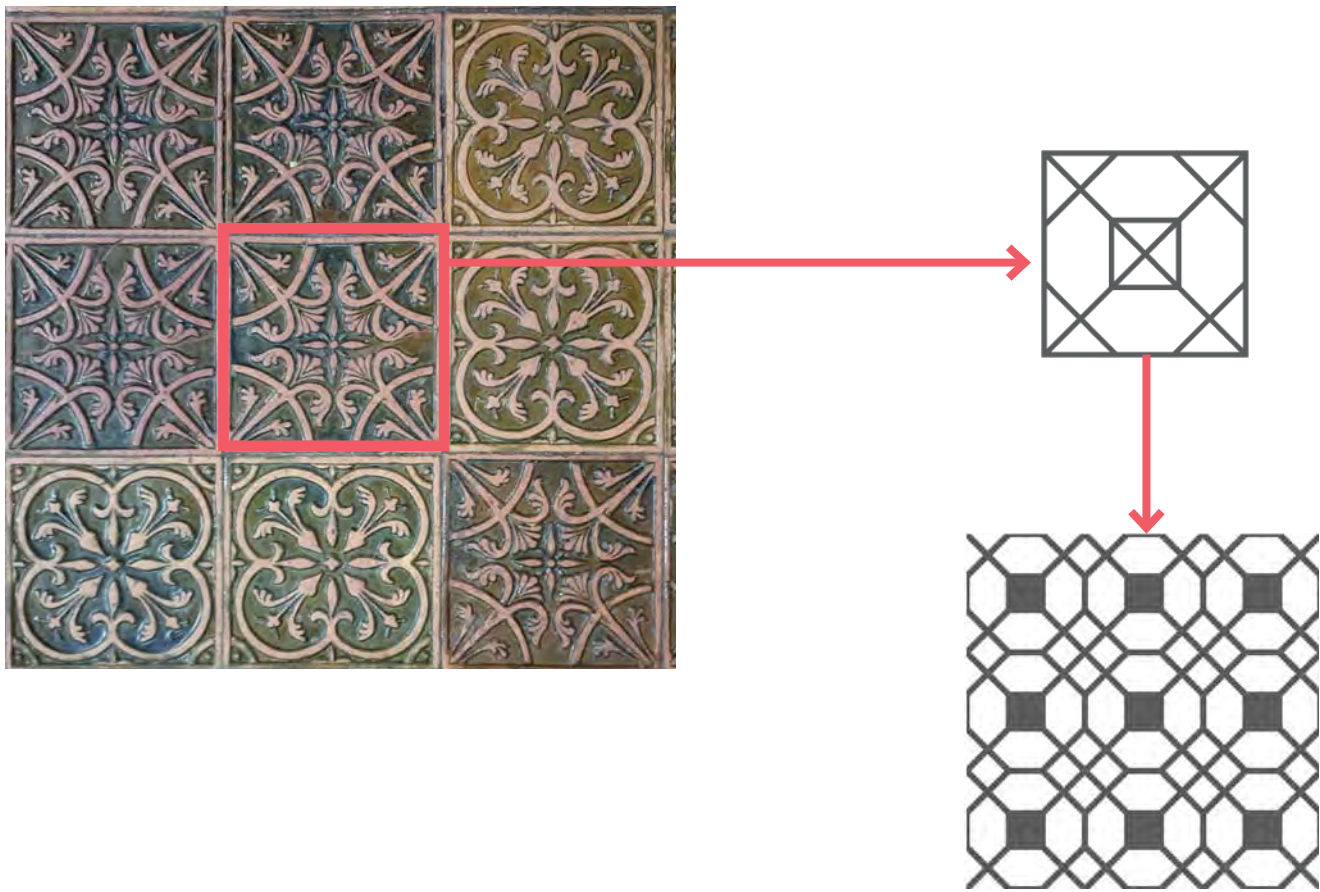
Key with approximate percentage mix:

Materials Palette

This proposal suggests a subtle palette of materials, pale brown brickwork, limestone features and glazing surrounded by metal frames that allow the buildings to sit within the context of the public realm.

Architectural Motif

Medieval tiles in St Alban's Cathedral choir have inspired an architectural motif that has been incorporated into the design in the form of ornamental balustrades and light diffusing screens.



Materials used

1. Hydroponic facade system (green wall)
2. Recessed top storey - grey metal cladding
3. Brickwork - pale brown brickwork with stack bonded details between windows
4. Limestone window surrounds and plinth
5. Balcony railings and decorative balustrade
6. Polyester power coated aluminium windows and door frame



Examples of brick façades



Bay study
Scale 1:50

