

# ST ALBANS

City and District Visitor Guide 2020



[enjoystalbens.com](http://enjoystalbens.com)



# Contents

4-5	<b>Make the Most of Your Visit</b>
6-9	<b>St Albans Museum + Gallery</b>
10-13	<b>St Albans City Centre</b>
14-15	<b>The City's Hidden Gems</b>
16	<b>The Great Outdoors</b>
17-19	<b>Around the District: Delights Beyond the City</b>
24-25	<b>What's On</b>
26-27	<b>City Centre Map</b>
28	<b>St Albans for Families</b>
30-31	<b>Shopping</b>
36-38	<b>Eating and Drinking</b>
44-49	<b>Where to Stay</b>
50	<b>Travelling to St Albans</b>
51	<b>Visitor Information</b>



The St Albans Visitor Guide 2020 is sponsored, designed and published by

**William Lawrence**

The Mission Hall, Clifton Street, St Albans, AL1 3RY  
wla.uk.com 01727 833 122

# Welcome to St Albans

Welcome to the beautiful District of St Albans, just 20 miles and 20 minutes by train from central London. This is a place of extraordinary significance in the development of religion and culture in Britain. Over 2,000 years of fascinating, visible history is within easy, walkable reach.

Step back into Roman times, marvel at the spectacular Cathedral and the shrine of Britain's first saint, and wander streets of medieval architecture.

Explore the historic City to discover independent shops and boutiques, browse the 500-year-old Charter Market, and experience the hospitality of quaint pubs and chic restaurants.

St Albans Museum + Gallery, a centre for arts and culture, sits in the very heart of the City. Soak up the atmosphere of this grand 19th-century building, with regularly-changing exhibitions and a vibrant programme of events.

St Albans Cathedral is a great place for the whole family to visit. Discover its treasures, including the longest nave in England and an extensive collection of medieval wall paintings, as well as an exciting programme of activities and events and an interactive exhibition.

We look forward to welcoming you. See page 50 for practical information on getting here. To help you plan the timing of your visit, see pages 24 and 25 for some of the special events that are taking place throughout the year.

[enjoystalbens.com](http://enjoystalbens.com)



# St Albans in a Day

Even if you've only got a day, there's lots to enjoy and explore in St Albans. Here is our handy guide to help you have the best day out in history.

Photo: Ren Behan



Start at **St Albans Museum + Gallery** (page 7 and 11) in the 19th-century Town Hall which has been restored beyond its former glory. An orientation point for visitors, it showcases the City's history and culture with cutting-edge art and historical exhibitions which change regularly.

On Wednesdays and Saturdays, the vibrant **Charter Market** (page 12) takes place on St Peter's Street. It's the busiest and best in the region.

A few yards away is **St Albans Clock Tower** (page 12) - the only medieval town belfry in England. At weekends in spring and summer, negotiate a fascinating and uneven winding staircase to enjoy the magnificent views from the top.

Follow Waxhouse Gate, where medieval pilgrims bought their candles, down to the ancient **Cathedral** (page 11). This ancient place of worship was built on the site of the martyrdom of Britain's first saint, using bricks from the Roman City of Verulamium. Pop inside (it's free) to see the longest nave in England, a rare wooden 'watching loft', and the finest collection of medieval wall paintings in the country.

Linger in the **Cathedral Quarter** (page 30) where you will find independent shops and historic inns, amid evidence of the City's past as an important stop on the coach routes into and out of London.

The adjacent imposing 14th-century **Abbey Gateway** has been a monastery, prison, and home to the third printing press in England during its colourful history.



A stroll through the Abbey Orchard will take you to **Verulamium Park** (page 10), where you can see original Roman town walls. Roman Verulamium, once the third biggest city in Roman Britain, is brought to life in the **Verulamium Museum** (page 10) which displays some stunning mosaics and relics. Close by is Britain's only staged Roman theatre, built in 140AD.

Make your way back stopping at one of the City's more than 30 pubs. In the City where the Campaign for Real Ale (CAMRA) was established, there's a fantastic selection, including **Ye Olde Fighting Cocks** (page 13), the oldest pub in England.

## Make a weekend – or longer – of it

If you have more than one day to spend, there are some quirky little gems out there to discover. **St Albans Organ Theatre** celebrates mechanical musical instruments and dance organs, and you can visit a fully-preserved **Signal Box** next to a mainline railway. Turn to pages 14 and 15 to find out more.

The pretty villages in the District are themselves home to some fascinating attractions such as **Redbourn Village Museum** (page 17) and the working flourmill at **Redbournbury Mill** (page 17).

There is also beautiful countryside which makes for wonderful country walks. Some of these, such as the **Wheathampstead Heritage Trail** (page 18), will delight history buffs, while nature lovers will enjoy the combination of ancient and new woodland at **Heartwood Forest** (page 18).



Younger visitors may enjoy a day at **Willows Activity Farm** (page 19) in London Colney, which is also home to the **de Havilland Aircraft Museum** (page 19).

Whether you've lived here all your life or you're a first time visitor, there is plenty in the District to spark your interest, open your eyes and feed your imagination.

# St Albans Museum + Gallery

Town Hall, St Peter's Street,  
St Albans, AL1 3DH

**Monday to Saturday: 10am–5pm,**

**Sunday: 11am–5pm**

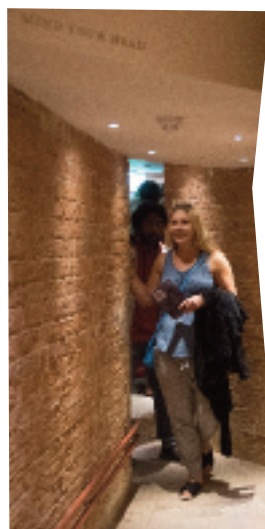
**T: 01727 864511**

**W: [stalbanstmuseums.org.uk](http://stalbanstmuseums.org.uk)**

Located at the heart of one of Britain's most historic cities, St Albans Museum + Gallery is a brand new centre for arts and culture.

Showcasing over 2,000 years of priceless heritage, this new museum celebrates St Albans' unique story. Step inside and explore fascinating exhibitions exploring the most dramatic points of British history displayed side-by-side with contemporary artworks and installations.

With something new to see each time you visit, come and enjoy regularly-changing exhibitions and cutting edge art installations, take part in the vibrant programme of events, and explore the fascinating histories of the Town Hall, its Assembly Room, Courtroom and Cells.







### Café

Start your day with a barista-made coffee and pastry or enjoy freshly made hot and cold lunch options in the Courtroom. Made with locally-sourced ingredients, the café offers tempting cakes, freshly-baked scones and a selection of speciality teas throughout the day.

### Locally sourced treasures

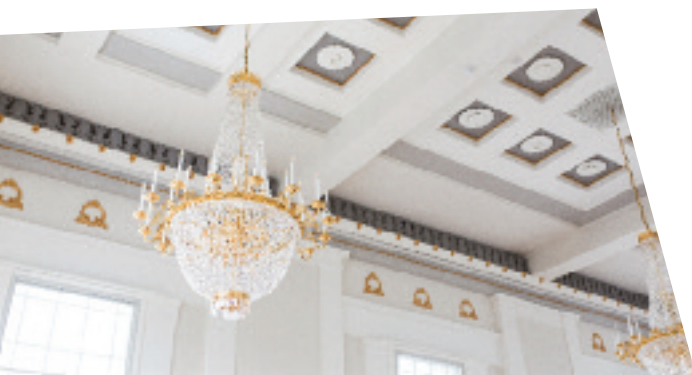
Pick up a souvenir in the museum shop after a visit to St Albans Museum + Gallery. Inspired by our city, our collections, our exhibitions, and great art, you'll find a unique selection of must-buy gifts, books and souvenirs. The museum gift shop also specialises in locally-sourced products and unique hand-made gifts by local artisans so no matter what you pick up, you know it'll be one of a kind.

### A unique and historic venue for your special event in St Albans

Built in 1831 and lovingly restored to its former glory, this magnificent Georgian landmark could be the perfect venue for your next event.

From the timeless elegance of the Georgian Assembly Room, with its ornate chandeliers and lustrous gold leaf, to the sleek, white styling of the modern galleries, these versatile and impressive spaces provide a stunning backdrop for any occasion – from conferences, seminars and exhibitions to fundraising dinners, parties, drinks receptions, and even weddings of up to 150 guests.

Email [stalbands@leafi.co.uk](mailto:stalbands@leafi.co.uk) for more information.



## Verulamium Museum

**St Michael's Street, St Albans AL3 4SW**

This award-winning museum displays beautiful objects from Verulamium, the third largest City of Roman Britain. See some of the finest Roman mosaics and wall plasters outside the Mediterranean, and discover the life and times of a major Roman city.

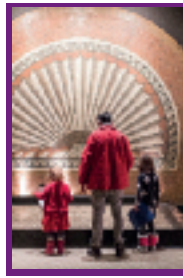
**10am-5:30pm Mon-Sat, 2-5:30pm Sun.**

**Last admission 5pm.**

Admission charges apply, see website. Joint admission with Roman Theatre available.

**T:** 01727 751810

**W:** stalbansmuseums.org.uk



## Roman Theatre

**Bluehouse Hill, St Albans AL3 6AD**

Just a short walk from Verulamium Museum are the remains of a Roman theatre with a stage rather than an Amphitheatre – the only example of its kind in Britain. Nearby are the foundations of a Roman town house, a sacred shrine and Roman shops.

**March to October: 10am-5pm daily**

**November to February 10am-4pm daily**

**T:** 01727 835035

**W:** gorhamburyestate.co.uk



## The Roman Mosaic and Hypocaust

**Verulamium Park, St Albans AL3 4SW**

Part of a suite of rooms in a large town house built around 200AD. Beneath a fine mosaic, a hypocaust – a precursor of modern central heating – can be seen.

**April to Sept: Mon-Sat 10am-4:30pm, Sun 2pm-4:30pm**

**Oct to March: Mon-Sat 10am-3:45pm, Sun 2pm-3:45pm**

**T:** 01727 751810 **W:** stalbansmuseums.org.uk



## Verulamium Park

**St Albans AL3 4SW**

Over 100 acres of parkland in the City centre, named after the Roman City of Verulamium on which it stands. The River Ver that flows through the park is a rare chalk stream, which feeds the ornamental lakes, home to a wealth of waterfowl.

You can see parts of the Roman wall which surrounded the City. The park also has a café, playground, splash park and many sports facilities.

**W:** enjoystalbans.com



## St Albans Cathedral

**Sumpter Yard, Holywell Hill, St Albans AL1 1BY**

St Albans Cathedral stands over the place where Alban, Britain's first saint, was buried over 1,700 years ago. Surrounded by beautiful parkland, the Cathedral is a treasure trove of history with tours, events and activities for all ages. It is home to the Shrine of St Alban, the longest nave in England, stunning medieval wall paintings and architecture that spans a millennium.

You can now also enjoy a visit to the Cathedral's new Welcome Centre and Café, and explore a new Exhibition which reveals the many treasures and fascinating stories the Cathedral has to share. With dressing up for children and interactive displays, St Albans Cathedral is a great day out for all ages.

**FREE entry (donations welcome)**

**8:30am-5:30pm daily**

**T:** 01727 890210 **W:** stalbanscathedral.org



## St Albans Museum + Gallery

**Town Hall, St Peter's Street, St Albans, AL1 3DH**

A world-class centre for arts and culture at the heart of one of Britain's most historic cities. Set over three floors, state-of-the-art gallery spaces showcase over 2,000 years of priceless heritage and display contemporary artworks – sharing local, national and world treasures with visitors.

Enjoy regularly-changing exhibitions. Take part in the vibrant programme of events, and explore the fascinating histories of the Georgian Grade II\* listed Town Hall, its Assembly Room, Courtroom and Cells. Meet with friends, enjoy barista-made coffee with a delicious pastry, or indulge in a special lunch in the atmospheric court room. Shop, learn, experience art and discover history all under one roof. Free general admission.

**Monday to Saturday: 10am-5pm, Sunday: 11am-5pm**

**T:** 01727 864511 **W:** stalbansmuseums.org.uk



## St Michael's Village

**St Michael's Street, St Albans AL3 4SP**

Nestling at the west end of Verulamium Park, the village is home to St Michael's Church, built on the site of Verulamium's basilica and the most extant Anglo-Saxon building in Hertfordshire. It is also the final resting place of Sir Francis Bacon.

Kingsbury Watermill, a working 16th-century watermill overlooking the River Ver, is home to The Waffle House. The historic village pubs are a welcome spot to rest after a visit to the park or Verulamium Museum.





## Charter Market

**St Peter's Street, St Albans AL3 5DJ**

Established over 1,000 years ago, the colourful market is one of the largest in the South East. Discover an enormous variety of wares from foodstuffs, flowers, gifts and clothes, to crafts and more unusual items. On the second Sunday of each month, there is also a Farmers' Market on St Peter's Street from 8am-2pm.

**8:30am-5:30pm every Weds and Sat**

**T:** 01727 819227 **W:** [enjoystalbens.com](http://enjoystalbens.com)



## Clock Tower

**High Street, St Albans AL3 4EL**



Completed by 1405, the Clock Tower is the only medieval town belfry in England. Today, you can climb the 93 steps to the top of the Tower and enjoy magnificent views of the City and Cathedral. Visitors are warned that the spiral staircase is steep and narrow.

**10:30am-5pm Saturday, Sunday &**

**Bank Holidays from Easter to end Sept**

**T:** 01727 751810 **W:** [stalbensmuseums.org.uk](http://stalbensmuseums.org.uk)



## Westminster Lodge and Verulamium Spa

**Holywell Hill, St Albans AL1 2DL**

A state-of-the-art leisure centre, with two pools and a water confidence area for little ones. Climbers of all ages and abilities can enjoy the indoor climbing wall. There's also a crèche, soft play area, and a café.

Verulamium Spa has five luxurious treatment rooms, including a couples' suite, as well as a beautiful heat and water oasis.

**W:** [everyoneactive.com](http://everyoneactive.com) **W:** [verulamiumspa.com](http://verulamiumspa.com)



## Walking Tours

St Albans City Tour Guides have a programme of walks throughout the year around the City and District. Walks include 'Historic St Albans - A City Revealed', 'Fishpool Street - Rags and Riches', and 'Ghosts and Ghouls'. Group bookings can also be accommodated by prior arrangement.

See website for walk dates and details.

**W:** [stalbanstourguides.co.uk](http://stalbanstourguides.co.uk)



## Historic Pubs

St Albans was a day's ride from London by horse and carriage, so many inns opened to satisfy demand for a night's lodging and refreshments. There are still dozens of pubs around the City, many offering real ales (as you'd expect in the home of CAMRA) and delicious food - including Ye Olde Fighting Cocks, the oldest pub in the UK.

The pubs are also the bedrock of a vibrant live music scene, with bands playing somewhere almost every day of the week.

See **lemonrock.com** for music listings.



## Arts and Entertainment

St Albans offers a vibrant and varied range of arts and entertainment. Enjoy a show at one of the theatres, and make a night of it by sampling the hospitality of our pubs and clubs.

### The Odyssey Cinema

**166 London Road, St Albans AL1 1PQ**



A glorious, recently-restored independent Art Deco cinema. It shows a wide selection of titles each month, including new releases, foreign language films, cult films and classics. The cinema boasts two fully-stocked bars. Enjoy films on the big screen with a glass of wine and a cheeseboard.

**T:** 01727 453088 **W:** [odysseypictures.co.uk](http://odysseypictures.co.uk)



**Alban Arena** - The biggest entertainment venue in the District, with a busy programme of national touring shows.

**Civic Centre, St Albans AL1 3LD** **W:** [alban-arena.co.uk](http://alban-arena.co.uk)

**The Horn** - Award-winning venue dedicated to live music of all genres. **Victoria Street, St Albans AL1 3TE** **W:** [thehorn.co.uk](http://thehorn.co.uk)

**Club Batchwood** - St Albans' most exclusive nightclub, with three music rooms, VIP tables and invitation-only VIP Suite.

**Batchwood Drive, St Albans AL5 3XA** **W:** [clubbatchwood.com](http://clubbatchwood.com)

**Abbey Theatre** - A member-run venue providing high-quality, affordable theatre for more than 50 years. **Westminster Lodge, Holywell Hill, St Albans AL1 2DL** **W:** [abbeytheatre.org.uk](http://abbeytheatre.org.uk)

For details of more venues around St Albans, visit **enjoystalbens.com**.

## St Albans South Signal Box

**Ridgmont Road, next to St Albans City Station**

The largest preserved Midland Railway signal box and one of the few preserved boxes that's open to the public and on a mainline railway. Built in 1892, this signal box contains a 44-lever frame dating from 1904 or before.

**2pm-5pm on 2nd and 4th Sunday of the month, April to October (2nd Sunday only Nov-Mar) plus other dates. See website**

**W:** [sigbox.co.uk](http://sigbox.co.uk)



Photo: Charles Baker

## St Albans Organ Theatre

**320 Camp Road, St Albans AL1 5PE**

A permanent playing collection of rare mechanical musical instruments, café dance organs, player pianos and theatre pipe organs. Live performances are given together with a commentary.

**2:15-4:30pm on the 2nd Sunday of the month March-Nov.** Monthly Saturday concerts, see website for details.

**T:** Information and booking line 01727 869693

**W:** [stalbanstheatre.org.uk](http://stalbanstheatre.org.uk)



Photo: Charles Baker

## Gorhambury House

**Off Bluehouse Hill, St Albans AL3 6AE**

The seat of the Earl of Verulam, Gorhambury was built in the late 18th century and replaced old Gorhambury House, the home of Francis Bacon, the philosopher and writer. The ruins of old Gorhambury House stand nearby.

Due to ongoing refurbishment, there will be limited opening in 2020. See website [gorhamburyestate.co.uk](http://gorhamburyestate.co.uk) for details.



Photo: Charles Baker

## Old Gorhambury House

**Gorhambury Estate, St Albans AL3 6AH**

Built by Sir Nicholas Bacon and visited by Queen Elizabeth I in 1572, the house passed to Sir Nicholas' son, philosopher and statesman Francis Bacon.

The ruins can be accessed via a two mile walk through scenic Gorhambury Estate. The path is a permissive route, accessible (subject to any closure of the drive) on foot or on bicycle daily from 8am to 6pm.

**W:** [gorhamburyestate.co.uk](http://gorhamburyestate.co.uk)



## Home of the Ryder Cup

Samuel Ryder, best remembered as the founder of the Ryder Cup, was also one of St Albans' most notable citizens as a successful businessman, churchman and local politician. You can follow in his footsteps by walking the Samuel Ryder Trail ([enjoystalban.com](http://enjoystalban.com)), and if you're inspired to pick up your clubs, you can play golf at:



**Verulam Golf Club:** home of the Ryder Cup, where Samuel Ryder was once a member. 226 London Road, St Albans AL1 1JG  
**W:** [verulamgolf.co.uk](http://verulamgolf.co.uk)

**Batchwood Golf Course:** challenging 18-hole municipal course. Batchwood Drive, St Albans AL3 5XA **W:** [1life.co.uk](http://1life.co.uk)

**Abbey View Golf & Track:** 9-hole golf course with Foot Golf Holywell Hill, St Albans AL1 2DL **W:** [1life.co.uk](http://1life.co.uk)

**Centurion Club:** Hemel Hempstead Road, St Albans HP3 8LA  
**W:** [centurionclub.co.uk](http://centurionclub.co.uk)

## Sopwell Nunnery

**Cottonmill Lane, St Albans AL1 2BY**

Visit the ruins of Sir Richard Lee's Tudor country house, built on the site of a 12th-century nunnery. The site is an ideal spot for a family picnic, with adjacent wildlife meadow and the River Ver rare chalk stream.

Site is open access

**W:** [stalbanstmuseums.org.uk](http://stalbanstmuseums.org.uk)



## Clarence Park

**Clarence Road, St Albans AL1 4NF**

A classic Victorian park donated to the City in 1894 by Sir John Blundell. The park has some original features, including rose and flower beds, Aberdeen granite drinking fountain and the park-keeper's lodge. The major building in the park is the impressive Cricket Pavilion. There is also a sensory garden and a recreation ground with sports facilities.

**W:** [enjoystalban.com](http://enjoystalban.com)





## The Great Outdoors

The countryside around St Albans is wonderfully diverse. Thousands of years of human occupation have left us with a layered landscape that is full of hidden surprises waiting for you to discover. Historic Bronze Age routes lie alongside Roman roads and modern motorways. Areas of ancient woodland meet the more planned landscape of the 18th century. Great mansions stand within picturesque parkland, and if you look carefully, you can find trees of up to 1,000 years old. This is a landscape that is crying out to be explored!

In the City, **Verulamium Park** (page 10) houses 100 acres of beautiful parkland close to the City centre and is a popular attraction throughout the year with a wide range of facilities. The Park is named after the Roman City of Verulamium on which it stands. The City walls and outline of the London Gate can still be seen on the slopes, alongside a running track, play area and splash park.

Never more than a short bus or cycle ride from the centre of St Albans there are many footpaths, bridleways, byways and quiet country lanes, providing lots of opportunities to get active in and around St Albans. For walkers and cyclists, there are paths and cycle routes criss-crossing the district. The Alban Way and the Nickey Line are disused railway lines now converted into popular pedestrian and cycle paths, part of the National Cycle Network. **Redbourn** (page 17) and **Wheathampstead** (page 18) are great bases for cyclists and walkers, with routes of various distances available at [enjoystalbens.com](http://enjoystalbens.com).

For a walk on the wilder side, **Nomansland Common**, **Heartwood Forest** and **Bricket Wood Common** (pages 18-19) provide a haven for dog walkers, kite flyers and tree climbers with a range of pubs within handy walking distance, too!

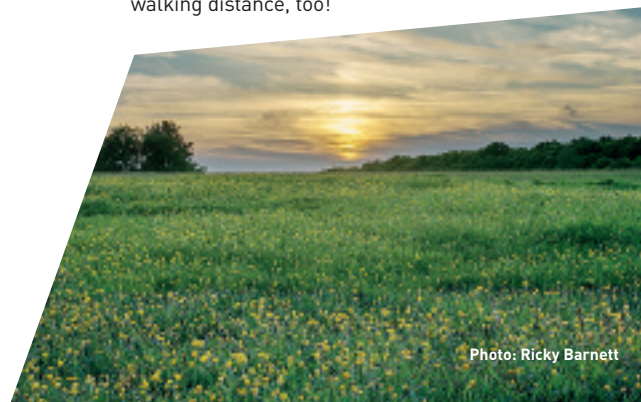


Photo: Ricky Barnett

## Harpenden

A vibrant town to the north of St Albans, Harpenden has a fine high street and an array of interesting shops and independent restaurants. A Farmers' Market every month, walking and cycling paths and Rothamsted Park make for a relaxing rural feel, while the Harpenden Public Halls and excellent leisure facilities create entertainment opportunities galore.



### Rothamsted Park

**Amenbury Lane, Harpenden AL5 2EF**

Explore the park's wide open spaces or stroll along the avenue of lime trees. The 56-acre park also has a children's play area, skateboard park and swimming pool. During the summer, the park hosts the **Harpenden Carnival** and the **Highland Gathering** (see p24-25).

### Rothamsted Manor

Beautiful Grade I listed house dating back to 1212. Take a stroll around the gardens or visit the Manor for one of their summer afternoon teas. **West Common, Harpenden AL5 2BG W:** [rothamstedmanor.com](http://rothamstedmanor.com)

### Harpenden Sports Centre and Swimming Pool

**Leyton Rd, Rothamsted Park, Harpenden, AL5 2HU W:** [1life.co.uk](http://1life.co.uk)

### Harpenden Public Halls

**Southdown Rd, Harpenden AL5 1TE W:** [harpendenpublichalls.co.uk](http://harpendenpublichalls.co.uk)

## Redbourn

Picturesque Redbourn, shortlisted for Channel 4's Village of the Year 2018, has been settled at least since Saxon times and is recorded in the Domesday Book. The Common was the site of Hertfordshire's first recorded cricket match in 1666, and the village has a number of quaint cafes and shops. A hub for cyclists and walkers, take a break at the watermill or village museum before exploring the surrounding countryside.

### Redbournbury Watermill

**Redbournbury Lane, Redbourn Road AL3 6RS**

A fully restored 18th-century working watermill and bakery on the River Ver just north of St Albans. The river and surrounding countryside are a haven for wildlife and the mill is an ideal stop for walkers and cyclists.

**Mill and Bakery 9am-1pm Sat; Mill only 2:30-5pm Sun (4pm in winter).** See website for other special open days

**T:** 01582 792874 **W:** [redbournburymill.co.uk](http://redbournburymill.co.uk)



### Redbourn Village Museum

**Silk Mill House, The Common, Redbourn AL3 7NB**

Three galleries in the former steam-powered silk mill consider the history, industry and community of Redbourn through permanent displays and changing exhibitions.

**2-5pm Sat & Sun from February to November**

**T:** 01582 793397 **W:** [redbournmuseum.org](http://redbournmuseum.org)

### Redbourn Leisure Centre

**75 Dunstable Road, Redbourn AL3 7PP W:** [everyoneactive.com](http://everyoneactive.com)



## Wheathampstead

Wheathampstead Village is sometimes known as "The First Capital" and has an amazing history going back 10,000 years. Take a detour to the impressive Devil's Dyke, an example of Celtic earthworks that is in places 32 feet deep and 100 feet across. Rows of pretty cottages, a picture-perfect parish church and the grassy banks of the River Lea make this perhaps the archetypal English village. The Wheathampstead Heritage Trail will help you discover it in all its idyllic glory.

### Wheathampstead Heritage Trail

#### Wheathampstead Village

The Heritage Trail includes 21 historical properties all within easy walking distance of each other. There is no prescribed route to follow for this self-guided trail. You can start at any point, visiting as many or as few of the sites as you wish.

**W:** wheathampsteadheritage.org.uk



### Wheathampstead Old Railway Station

Junction of Lower Luton Road/Codicote Road and Lamer Lane/Station Road

Partially-restored platform and railbed with Victorian and later features, now used as a picnic site and part of the Village Heritage Trail. The station was on the Hatfield to Luton & Dunstable Line, now a cycle route and walkway. The site is open access.

## Sandridge

Sandridge Village is between St Albans and Wheathampstead with St Leonard's Church at its heart. Pubs and a tea room (as well as a thriving village store) provide refreshment for hikers and dogwalkers on nearby Nomansland Common and in Heartwood Forest.

### Heartwood Forest

Near Sandridge, just north of St Albans

The largest new native forest in the country with more than 600,000 trees now planted in this ambitious Woodland Trust project. It offers an array of habitats with pockets of ancient woodland, wildflower meadows, an arboretum, a community orchard and fantastic wildlife spotting. Go wild in the great outdoors, enjoy some fantastic walks and really get back to nature.

**W:** heartwood.woodlandtrust.org.uk



### Nomansland Common

Between Wheathampstead and Sandridge

Discover the Common's heathland, wildflower meadows and woods on a one mile trail. The Common is a haven for wildlife and the heathland supports a wealth of rare plants and animals.

## London Colney

London Colney to the south of the City lies on the old coaching route from London. The historic centre of the village is along the River Colne, which passes under the seven-arched bridge built by James Hill and Francis Carrack in 1775. The church and village green provide a peaceful setting in contrast to the nearby Colney Fields shopping centre.

### Willows Activity Farm

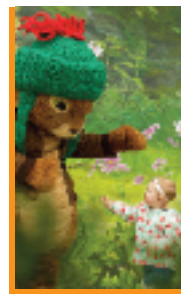
Coursers Rd, London Colney, St Albans AL4 0PF



An all-inclusive family day out. Meet the farmyard animals and enjoy a seasonal programme of events and activities including funfair rides, children's shows and acres of adventure play. And if the sun decides to have a day off, there's plenty of under cover play too!

**Open daily 10am-5:30pm (last entry 4:30pm)**

**T:** 0333 3312060 **W:** willowsactivityfarm.com



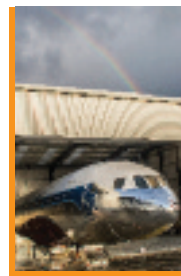
### de Havilland Aircraft Museum

Salisbury Hall, London Colney, St Albans, AL2 1BU

Discover de Havilland's contribution to innovative British Aviation technology. See and explore the world's first jet airliner - the Comet - and many other de Havilland Aircraft. There's also an extensive collection of de Havilland aero engines and other memorabilia.

**Opening Hours - Tuesday-Sunday (closed Monday) and open Bank Holiday Mondays from 16th February to 20th December 2020 10.30-5pm (last entry 4pm)**

**T:** 01727 826400 **W:** dehavillandmuseum.co.uk



### Colney Fields Retail Park

London Colney M25, Junction 22

### Cotlandswick Leisure Centre

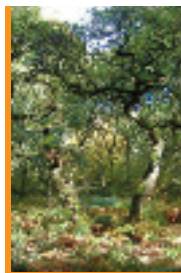
341 High Street, London Colney AL2 1EB **W:** 1life.co.uk

## Bricket Wood

### Bricket Wood Common

Bricket Wood, two miles south of St Albans

This common, a Site of Special Scientific Interest (SSSI), consists of diverse habitats including ancient semi-natural woodland, hornbeam coppice woodland, wet lowland heath/acid grassland, and ponds and seasonal streams. The Common supports an array of wildlife including great crested newts, butterflies, heather, fungi, bluebells and Heath Spotted Orchids.





**ENJOY A GREAT DAY OUT**



**WILLOWS ACTIVITY FARM**

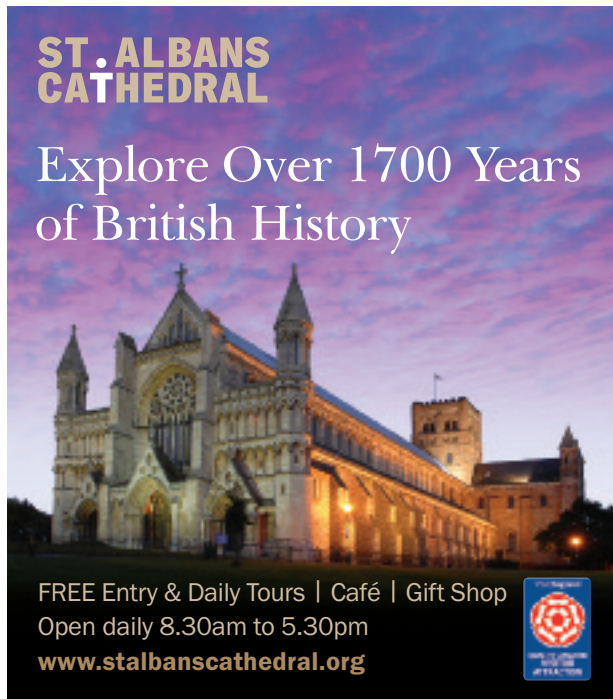
**BOOK DISCOUNTED ADVANCE TICKETS**  
[WILLOWSACTIVITYFARM.COM](http://WILLOWSACTIVITYFARM.COM) J22 off the M25

**FREE PARKING**

ENTERED RACKETS™ A © Frederick Warne & Co. Limited, and Silverdale TFL Limited 2003. All rights reserved.

**ST. ALBANS CATHEDRAL**

Explore Over 1700 Years of British History



FREE Entry & Daily Tours | Café | Gift Shop  
 Open daily 8.30am to 5.30pm  
[www.stalbanscathedral.org](http://www.stalbanscathedral.org)



Showing a broad selection of film titles each month. Including new releases & classics.

Matinée prices start at £5.  
 Evening prices from £8.

Tickets can be booked in person, by phone - 01727 453088 and online: [www.odysseypictures.co.uk](http://www.odysseypictures.co.uk)  
 166 London Road, AL1 1PQ

**THE ODYSSEY**  
 CINEMA ST ALBANS

A beautifully restored Art Deco cinema near the centre of St Albans



**THE SANDPIT THEATRE**

A MULTI-PURPOSE VENUE IN THE HEART OF THE COMMUNITY OFFERING WORLD CLASS THEATRE, DANCE AND LIVE EVENTS ALL YEAR ROUND

THE RIDGEWAY  
ST ALBANS  
AL4 9NX  
BOX OFFICE: 01727 799565  
WWW.SANDPITTHEATRE.CO.UK



**THE ALBAN ARENA**  
Hertfordshire's Premier Entertainment Venue



CIVIC CENTRE, ST ALBANS, AL1 1JD  
**BOX OFFICE**  
01727 844488  
WWW.ALBAN-ARENA.CO.UK

FOR A FULL LIST OF WHAT'S COMING UP AT THE ALBAN ARENA PLEASE VISIT OUR WEBSITE, OR PICK UP A BROCHURE FROM OUR BOX OFFICE



# VERULAM GOLF CLUB

**Home of the Ryder Cup**



Well into our second century as a thriving members' club situated in the heart of historic St Albans, known as Verulamium in Roman times.

MEMBERSHIPS - VISITORS  
WELCOME

FUNCTION SUITE  
AVAILABLE



Located in the heart of St Albans,  
Our challenging par 72 course was designed  
by James Braid in 1905

225 LONDON ROAD, ST ALBANS, HERTS, AL1 1JG  
T: 01727 853327 W: [www.verulamgolf.co.uk](http://www.verulamgolf.co.uk)

@HomeofTheRyderCup

@VerulamGC





### Hertfordshire Year of Culture 2020

A year to showcase Hertfordshire as a county of creative and cultural opportunity. **W:** creativehertfordshire.com

JAN	Jan 23 - Feb 20	<b>Anne Frank + You</b> Thought-provoking exhibition about the remarkable life and legacy of Anne Frank. <b>W:</b> stalbanscathedral.org
	4-5	<b>Herts Big Weekend</b> Enter the ballot in February 2020 to win a free day out on Herts Big Weekend. <b>W:</b> hertsbigweekend.co.uk
APR	17	<b>Beating the Bounds</b> Walk the boundary of St Albans in a ceremony dating back to medieval times. <b>W:</b> enjoystalbans.com
MAY	23-24	<b>Hertfordshire County Show</b> An agricultural show offering fun, education and family entertainment. <b>W:</b> hertsshow.com
	30-31	<b>St Albans Steam &amp; Country Show</b> Annual rally with over 30 full size steam engines, a fairground and stalls. <b>W:</b> hertssteam.co.uk
JUNE	13	<b>Harpenden Carnival</b> Carnival procession, live music, stunt shows and much more. <b>W:</b> harpendencarnival.com
	13-14	<b>Art on the Common</b> A showcase for local artists featuring a wide range of works. <b>W:</b> artonthecommon.co.uk
	14	<b>St Albans Half Marathon</b> Popular half marathon, walking half marathon, 5k Race and 1.5 Mile Fun Run. <b>W:</b> stalbanshalfmarathon.com
	20	<b>Alban Pilgrimage</b> Spectacular carnival puppets tell the dramatic story of Britain's first saint, Alban. <b>W:</b> stalbanscathedral.org
	20	<b>Medieval Festival</b> An afternoon of fun and games to kick-start the Cathedral's Medieval Summer. <b>W:</b> stalbanscathedral.org
	21	<b>Alban Street Festival</b> A street festival celebrating all that is fun and fabulous about St Albans. <b>W:</b> enjoystalbans.com
JULY	26-28	<b>St Albans Folk Festival</b> Free live music in the City during the day plus Saturday Festival Concert. <b>W:</b> stalbansfolkmusic.org.uk
	1	<b>St Michael's Village Folk Evening</b> Folk music and dance in the historic St Michael's village setting. <b>W:</b> stmichaelsfolkevening.org.uk
	3-5	<b>Childwickbury Arts Fair</b> A celebration of the arts in the beautiful grounds of Childwickbury Estate. <b>W:</b> childwickburyarts.com
	4	<b>M Festival</b> Music festival showcasing local talent, back for its 11th year in 2020. <b>W:</b> mfestival.co.uk
	7-12	<b>St Albans Film Festival</b> A celebration of film with a Garden Cinema, short film competition plus other events. <b>W:</b> stalbansfilmfestival.com
	12	<b>Harpenden Highland Gathering</b> Featuring piping, highland dancing and highland games. <b>W:</b> harpenden-lions.co.uk/highland-gathering

JULY	12	<b>Wheathampstead Village Day</b> A day of all things Wheathampstead, with entertainment for all the family. <b>W:</b> wheathampstead-pc.gov.uk
	22	<b>Classics on the Common</b> Britain's biggest mid-week classic car show, with more than 1,000 vehicles. <b>W:</b> classicsonthecommon.com
AUG	28-30	<b>Meraki Festival</b> Three days of live music featuring globally-renowned, emerging and local artists. <b>W:</b> merakifestival.com
SEPT	Sept	<b>St Albans Food &amp; Drink Festival</b> Showcasing the fantastic range of local food, including an exciting street festival on 27 Sept. <b>W:</b> enjoystalbans.com
	5	<b>Redbourn Classics</b> Classic Vehicle Show plus Village Fête in aid of local charities. <b>W:</b> facebook.com/Redbournclassics
	11-13	<b>Pub in the Park</b> A celebration of the best food and music the country has to offer. <b>W:</b> pubintheparkuk.com
	11-20	<b>Heritage Open Days</b> Once-a-year chance to explore buildings normally closed to the public. <b>W:</b> heritageopendays.org.uk
	Sept 12 - Oct 4	<b>Hertfordshire Open Studios</b> Artists open their doors for the biggest county-wide art event. <b>W:</b> hvaf.org.uk/Open-Studios
	18	<b>George Street Gin &amp; Jazz</b> A boutique evening with music, food and, of course, gin in the picturesque Cathedral Quarter. <b>W:</b> enjoystalbans.com
NOV	19-20	<b>Celebration Earth!</b> Story telling, music, poetry, art and more with environment, faith, art and community groups. <b>W:</b> celebrationearth.org
	23-26	<b>CAMRA St Albans Beer &amp; Cider Festival</b> Up to 300 different British real ales, real lagers, fruit beers, ciders and more. <b>W:</b> stalbansbeerfestival.org.uk
	7	<b>St Albans Cathedral Fireworks Spectacular</b> The annual Firework Spectacular in Verulamium Park. <b>W:</b> stalbanscathedral.org
	15	<b>St Albans Christmas Cracker</b> An afternoon of festive fun, full of music and entertainment. <b>W:</b> enjoystalbans.com
	22	<b>Harpenden Christmas Carnival</b> A spectacular carnival procession and turning on of the Christmas lights. <b>W:</b> harpenden.gov.uk
DEC	29	<b>Redbourn Christmas Market</b> Visit the pretty historic village of Redbourn for its annual winter festival. <b>W:</b> redbournchristmasmarket.com
	1-31	<b>Christmas in St Albans</b> Enjoy the festive atmosphere with events, markets and Christmas shows! <b>W:</b> enjoystalbans.com
	19*	<b>Carols on the Hour</b> Take a break from Christmas shopping and enjoy this special Cathedral event. <b>W:</b> stalbanscathedral.org
	26	<b>St Albans Mummers perform George &amp; the Dragon</b> Unique adaptation performed in various locations around the City Centre. <b>W:</b> stalbansmummers.org.uk

\* Provisional dates. Every effort has been made to confirm event dates prior to publishing. Please check before travelling.



### St Albans City Centre Map and Key

- |                     |                                  |                               |
|---------------------|----------------------------------|-------------------------------|
| 1 Abbey Gateway     | 9 Kingsbury Watermill            | 17 St Albans South Signal Box |
| 2 Abbey Theatre     | 10 Roman Mosaic & Hypocaust      | 18 St Michael's Church        |
| 3 Alban Arena       | 11 Maltings Arts Theatre/Library | 19 Verulamium Museum          |
| 4 Cathedral         | 12 Maltings Shopping Centre      | 20 Verulamium Park            |
| 5 Christopher Place | 13 Odyssey Cinema                | 21 Village Arcade             |
| 6 Civic Centre      | 14 Police Station                | 22 Vintry Garden              |
| 7 Clarence Park     | 15 Roman Theatre                 | 23 Ye Olde Fighting Cocks Inn |
| 8 Clock Tower       | 16 St Albans Museum + Gallery    |                               |

- P** Car Parks
- C** Coach Parks
- +** Churches, Places of Worship
- .... Footpaths
- Yellow** Main Shopping Centre
- WC** Public Toilets

- i** Visitor Information
- CD** Coach Drop Off Point

## St Albans for Families

There are plenty of fun activities for children and families around the District, many of them free to enjoy. There are also hundreds of events, small and large, taking place around the year: search by date on the website [enjoystalbans.com](http://enjoystalbans.com) before planning your visit. Both **St Albans Museum + Gallery** (page 11) and **Verulamium Museum** (page 10) offer free trail sheets to explore the museums and local area as well as family-focussed activities and workshops throughout the year (entry charges may apply).

At **St Albans Cathedral** (page 11) young visitors can enjoy interactive screens to take a look behind the scenes, brass rubbing, and fun dressing up! You can also borrow Explorer backpacks or do an adventure trail.

**Verulamium Park** (page 10) has a large children's play area and family-friendly café open all year round, and a toddler splash park to cool off on warm summer days (open May to early September). The London 2012 Olympic Legacy is clear to see with a beach volleyball court and the adiZone outdoor multi-gym facility, suitable for all ages.

If the weather is against you, there are a number of soft play centres in the District, the **Pioneer skate park** ([pioneerclub.co.uk](http://pioneerclub.co.uk)) for teens and swimming pools too. **Willows Activity Farm** (page 19) offers a wonderful family day out with a fun packed programme of farmyard animals, adventure play, fun fair rides, children's shows, falconry displays and tractor rides as well as the recently opened Peter Rabbit Adventure Playground. If muddy wellies or wheels is more your thing, check out our '**Great Outdoors Guide**' on page 16 for more.



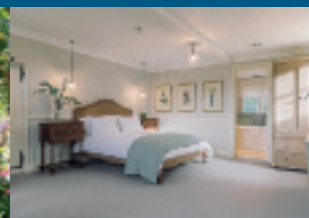
Photos: Emma Collins and Elyse Marks



HATFIELD HOUSE

## WHERE THE CITY ENDS & THE COUNTRY BEGINS

Whether you want to immerse yourself in the history, lose yourself in the beautiful gardens or simply take a stroll around the Stable Yard Shops Hatfield House has something for everyone.



HOUSE, PARK & GARDENS  
**OPEN FROM  
4TH APRIL 2020**

OUR BOUTIQUE GUEST  
HOUSE LAWN HOUSE IS  
**OPEN NOW**

[WWW.HATFIELD-HOUSE.CO.UK](http://WWW.HATFIELD-HOUSE.CO.UK)  
01707 287010  
[VISITORS@HATFIELD-HOUSE.CO.UK](mailto:VISITORS@HATFIELD-HOUSE.CO.UK)



# Shopping in St Albans

St Albans has been a shopping destination for hundreds of years. Our street market's roots extend back to the 9th century.

These days, the City has a collection of delightful independent stores, specialising in jewellery, fashion, beauty, homestyle and gifts. Two outdoor malls house high street favourites and luxury brands with an array of food and drink options to suit all tastes. Bring extra bags – it's time to Shop St Albans!

## Main Shopping Areas:

**Christopher Place** – shopping centre for luxury brands and independent boutiques

**The Maltings** – high street favourites and established local independents

**The Cathedral Quarter** – historic inns, medieval architecture and high quality independent boutiques and shops



**St Peter's Street** – the main artery of the City centre with flagship stores, dining, and key transport links

**Market Place** – independents, key brands and a twice – weekly market

**Catherine Street** – cafés, pubs and niche independents

**London road** – health and wellbeing, sustainable shopping, beauty treatments, award-winning independent dining and cafés

See [enjoystalbens.com/shop](http://enjoystalbens.com/shop) for full details.

[f @shopstalbens](https://www.facebook.com/shopstalbens)

Photos: Stephanie Belton



## Aylett Nurseries

The Complete Garden Centre

*A well known family business established in 1955, one of the Country's leading Garden Centres and specialist grower of Dahlias.*

**Garden Centre, Gift Shop, Coffee House & Celebration Garden ~ open all year round!**

- For special events & childrens activities please see our website for details -




@aylethenurseries   

Outdoor Plants • Houseplants  
Garden Sundries • Coffee House  
Gift Shop • Garden Furniture  
Plant Information & Advice Centre  
Free Parking • Home Grown Plants  
Celebration Garden and more...

North Orbital Road (A414), St. Albans,  
Hertfordshire, AL2 1DH / Tel: 01727 822255  
[www.aylethenurseries.co.uk](http://www.aylethenurseries.co.uk)  
Opening Hours: Mon-Fri: 8.30am - 5.30pm,  
Sat: 8.30am - 5.00pm, Sun: 10.30am - 4.30pm

# JAGO

Jewellers  
Est. 1750



29 Market Place, St Albans, AL3 5DL  
tel: 01727 851519  
[www.jagjewellers.com](http://www.jagjewellers.com) info@jagjewellers.com



— OPEN —  
TUESDAY-SUNDAY  
FROM SUNDAY 16TH  
FEBRUARY 2020

# THE ONLY PLACE TO SEE 3 MOSQUITOS

GET CLOSE UP AND INTO MANY  
de HAVILLAND AIRCRAFT



Mark B35 Mosquito



Mosquito Prototype - W4050



Mark VI Mosquito



The only museum dedicated to  
preserving the de Havilland heritage  
de Havilland Aircraft Museum, Salisbury Hall,  
London Colney, Hertfordshire AL2 1BU  
01727 826400 [www.dehavillandmuseum.co.uk](http://www.dehavillandmuseum.co.uk)

ONE  
**FREE**  
ADMISSION

VOUCHER CODE  
STAVG20

AGAINST THE PURCHASE OF THE  
FIRST FULL ADULT ADMISSION AT THE  
DE HAVILLAND AIRCRAFT MUSEUM\*

\*This voucher can be used until 19th  
December 2020. The voucher is not cash  
transferrable. The voucher is not valid for  
group visits or in conjunction with any other  
discount offer or promotion. Photocopies  
will not be accepted.

**MALTINGS**  
ST. ALBANS

RIVER ISLAND

LUSH

OASIS

benefit

FRANK

Accessorize

YATFACE

Joules

HOTEL  
Chocolat

HM

OLIVER BONAS

# Premier Destination

**Maltings is the premier  
shopping destination  
at the heart of St. Albans.**

It has something for  
everyone and whether  
you are looking for  
retail therapy, a bite  
to eat or simply to  
meet up with friends  
over a coffee,  
Maltings has it all.

Adjacent to the  
centre you will  
find its own  
multi-storey  
car park which  
offers nearly  
800 easy and  
convenient  
spaces.



**The Maltings is open**  
Mon to Sat 9am - 6pm\*  
Sun 10am - 5pm\*  
\*some stores may vary.



[www.maltingsshoppingcentre.co.uk](http://www.maltingsshoppingcentre.co.uk)



# the galleria

OUTLET SHOPPING

*Visit us and see for yourselves*

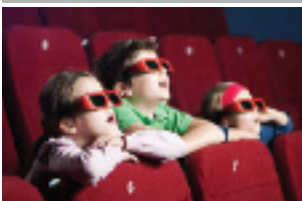


The Galleria is a sheltered outlet shopping and family leisure destination.

Shopping highlights include Nike Factory outlet, Gant outlet, GAP outlet, Marks & Spencer's outlet & more.

## ODEON

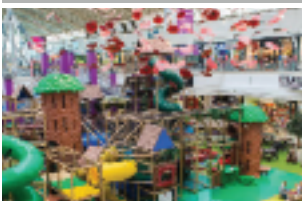
A nine screen digital Odeon cinema. Open from 11am until the end of the last screening.



Be spoiled for choice restaurant wise with Prezzo, Nando's and Frankie & Benny's to name but a few

## GET! WILD!

This giant indoor adventure playground area provides children aged 1 – 12 with an exciting setting in which to play.



**Opening Hours:** Mon-Fri: 10am - 8pm, Sat: 10am-6pm, Sun: 11am-5pm

Located above the A1M between junctions 3 & 4, a great day out and ample parking is waiting for you!

**01707 278301**

The Galleria, Management Suite,  
Comet Way, Hatfield, Herts, AL10 0XR

OVER  
**80**  
stores &  
restaurants

[www.thegalleria.co.uk](http://www.thegalleria.co.uk)



**CHRISTOPHER PLACE**



@CHRISTOPHERPLACESHOPPING



@CHRISTOPH\_PLACE



@CHRISTOPHERPLACESTALBANS

**THE PLACE TO BE**  
[WWW.CHRISTOPHER-PLACE.CO.UK](http://WWW.CHRISTOPHER-PLACE.CO.UK)





## Eating and Drinking

St Albans is an historic innkeeping City with modern fine dining, a thriving café culture, chic cocktail bars and traditional pubs.

St Albans embraces good food and drink, with a host of eateries offering food from every corner of the globe.

With over 100 restaurants, bistros, coffee shops and a huge selection of pubs and inns within the City centre, daytime shoppers and night-time revellers will be spoilt for choice. The City also has the only 3 AA rosette fine dining restaurant in Hertfordshire, Thompson St Albans on Hatfield Road.

As well as the bi-weekly **Charter Market** (page 12) with a dedicated street food area, there are monthly Farmers' Markets around the District which showcase the excellent local produce available.

St Albans hosts a range of independent food and drink shops where specialist knowledge and hard to find products abound, ready to join you in your own kitchen.

The Guinness Book of Records has formally confirmed that St Albans houses the oldest pub in England at Ye Olde Fighting Cocks, between the Cathedral and Verulamium Park.

St Albans has the most pubs per square mile in the country. Indeed, CAMRA even has its headquarters in St Albans, recognition of a hoppy heritage, if ever there was one, and the reason for the annual beer festival every autumn in the City.

Why so many pubs? St Albans is a day's ride from London. Lots of these pubs were once coaching inns, with the stable yards still visible too.

Visit [enjoystalbans.com](http://enjoystalbans.com) for more information on food and drink in and around St Albans.



Photos: Stephanie Belton  
and Ren Behan



## St Albans Food & Drink Festival



The annual autumn St Albans Food & Drink Festival also celebrates the vibrant local food scene with a range of events and an outdoor street 'Feastival'.

**The St Albans Food & Drink Awards** recognise excellence in local food businesses and are hotly contested each year.

The 2019 winners were:

- **Best Restaurant for a Special Occasion:** Tabure
- **Best Restaurant for Everyday Dining:** Per Tutti
- **Best Pub:** The Green Man, Sandridge
- **Best Bar:** The Bishop's Cave
- **Best Café:** Fleetville Larder
- **Best Local Producer:** Dartlish
- **Best Market Stall:** Eat Wholefoods
- **Best Food & Drink Shop:** Buongiorno Italia
- **Best Takeaway:** The Pudding Stop
- **Best Place to Work on the Go:** George Street Canteen
- **Most Family Friendly Venue:** DavVero
- **Best Newcomer:** The Reading Rooms, Wheathampstead
- **Winner of the Kate D'Arcy Award for Customer Service:** Tara's Vegan Treats



For details of the 2019 winners, as well as other businesses, producers and places to try, go to [enjoystalbans.com](http://enjoystalbans.com).



SOPWELL  
HOUSE

## THE PLACE FOR AFTERNOON TEA IN ST ALBANS



Tiered stand of homemade delicious delicacies, scones and finger sandwiches. From £25.95.

[enquiries@sopwellhouse.co.uk](mailto:enquiries@sopwellhouse.co.uk)

01727 864477







LOCH FYNE  
 RESTAURANT + BAR

**25% OFF\***  
 À LA CARTE

5 VERULAM ROAD, ST ALBANS, AL3 4DA  
 TEL: 01727 799050 EMAIL: STALBANS@LOCHFYNE.NET

\*Offer available between 22.11.19 - 31.12.20 with dishes from the a la carte food menu only, at Loch Fyne in St Albans only. Not valid after 6pm Fridays and Saturdays. All other menus including brunch, set menus and special event menus are excluded. Not valid with any other offer, promotion or discount or Loch Fyne Friends Card. One voucher per table for a max 6 diners. Offer subject to availability. We reserve the right to cancel, amend or withdraw this offer at any time.

# Heartwood Tearooms



## Our Tearooms

We'd love for you to come and experience our tea rooms, where our friendly staff are always here to make you feel welcome.

Please talk to us about hiring our tearooms for your special occasion!



Located in the heart of Sandridge, open 7 days a week 9-4 M-F, 9-5 W/end for breakfast, lunch, afternoon tea, and cake.

P: 01727 854711  
 W: heartwoodtearooms.co.uk  
 E: admin@heartwoodtearooms.co.uk  
 A: High Street, Sandridge, Saint Albans, Herts AL4 9DD



St Albans  
Museum +  
Gallery

Enjoy barista made coffee with a beautifully flaky pastry or indulge in a delicious lunchtime meal in the atmospheric Courtroom at St Albans Museum + Gallery.

Love these historic spaces? Why not hold your next special event in one of our beautifully restored rooms?

Email: [stalbands@leafi.co.uk](mailto:stalbands@leafi.co.uk)



## ST. ALBANS CAR AND VAN HIRE



for the  
**largest**

**Range of Self-Drive Cars,  
Vans, Trucks and Minibuses  
in the area**

**T: 01727 838151**

**E: [rentals@carandvanhire.co.uk](mailto:rentals@carandvanhire.co.uk)**

1a Ronsons Way, St Albans, Hertfordshire AL4 9PZ

**[www.carandvanhire.co.uk](http://www.carandvanhire.co.uk)**

## Where to Stay

St Albans offers a comprehensive range of accommodation, from small, intimate bed and breakfasts to large hotels. Whether you want elegant luxury or a modest place to stay, St Albans and the surrounding area is sure to meet your needs.

### Ratings Made Easy

- ★ Simple, practical, no frills
- ★★ Well presented and well run
- ★★★ Good level of quality and comfort
- ★★★★ Excellent standard throughout
- ★★★★★ Exceptional with a degree of luxury

More detailed information on star ratings is available from VisitEngland at [visitengland.com](http://visitengland.com) or the AA at [theAA.com](http://theAA.com)

To confirm a VisitEngland rating please visit [visitenglandassessmentservices.com](http://visitenglandassessmentservices.com)

For AA ratings, visit theAA.com or telephone 01256 844455 or email: [customer.services@theAA.com](mailto:customer.services@theAA.com)

### Awards – Gold, Silver and Red or Yellow Stars

Places that 'go the extra mile' will, in the case of VisitEngland, be awarded a Gold or Silver award and, in the case of the AA, be entitled to display red stars for a hotel or yellow for guest accommodation.



### Breakfast Award

VisitEngland's award given to hotels and B&Bs serving exceptional breakfasts.



### Rosette

The AA's rosette scheme is an award, not a classification. It is designed to assess the quality of the food served and is awarded annually on a rising scale of one to five.



### Ardmore

#### HOUSE HOTEL

All rooms with en-suite facilities and are available with and without breakfast

Various rooms available

- Single rooms
- Double/Twin rooms
- Superior rooms from
- Deluxe room (Bridal Room)
- Family rooms (Price on application)

Amenities

54 Lemsford Rd, St Albans, AL1 3PR.  
01727 859313 [www.ardmorehousehotel.co.uk](http://www.ardmorehousehotel.co.uk)

### Welcome

#### to The White Hart Hotel & Tudors Restaurant

The White Hart Hotel is a charming timbered old coaching inn located in the heart of St Albans, opposite the Cathedral and Abbey, offering value for money accommodation, bar and Tudors restaurant.

Dine in the hotel's intimate oak-panelled Tudors restaurant with a cosy fire place, serving Mediterranean grilled food.

Enjoy some drinks in the cosy atmosphere of the adjoining bar that includes a selection of Ales.

25-25 HOLLYWELL HILL | ST ALBANS | AL1 1EZ  
T 01727 853624 [whiteharthotelstalbans.co.uk](http://whiteharthotelstalbans.co.uk)





  
**TORRINGTON HALL**



**HOSPITALITY BOUTIQUE ROOMS AND VENUE SPACE IN THE HEART OF ST ALBANS**

TORRINGTON HALL IS A BEAUTIFULLY RESTORED 19TH CENTURY PROPERTY LOCATED JUST A SHORT WALK FROM ST ALBANS CATHEDRAL AND THE CITY'S HISTORICAL SIGHTS. THE UNIQUE BOUTIQUE VENUE IS HOME TO A TOTAL OF 12 INDIVIDUALLY STYLED BEDROOMS AND 2 MEETING SPACES, MAKING TORRINGTON HALL A PERFECT DESTINATION FOR VISITING HERTFORDSHIRE OR LONDON.

OUR BOUTIQUE VENUE SUITS ALL OCCASIONS INCLUDING:

CORPORATE EVENTS • MEETINGS • PARTIES • WEDDINGS

[www.torringtonhall.com](http://www.torringtonhall.com) • 01727 841 199 • [bookings@torringtonhall.com](mailto:bookings@torringtonhall.com)  
47 HOLYWELL HILL, ST ALBANS, HERTS, AL1 1HD  
FREE ONSITE PARKING FOR GUESTS



**HfH**  
**HomefromHolme**

Beautiful contemporary apartments  
City centre location  
Allocated parking  
Free WiFi

TALK TO US ABOUT OUR SPECIAL ST ALBANS RESIDENT RATES

★★★★ SERVICED APARTMENTS T: 01727 765756 W: [www.homefromholme.com](http://www.homefromholme.com)



**THE STRAW HOUSE**

VE ★★★★★ SERVICED APARTMENTS  
1a Spicer Street,  
St Albans, Herts. AL3 4PH  
Telephone:  
01727 810637/07966 581333  
Website:  
[www.strawhousestalbans.co.uk](http://www.strawhousestalbans.co.uk)



A collection of luxury serviced apartments mainly located in the historic Cathedral Quarter a few minutes stroll from the City centre. The Straw House, a former hat factory, has been awarded Gold standard from Visit England.

The portfolio includes twenty, one and two bedroom apartments as well as a three bedroom Penthouse. The buildings range from a refurbished straw hat factory, Edwardian villa and an arts and crafts house once owned by one of the most prominent local families.

Perfect for short leisure stays, friends and family, moving house or undertaking renovation works, business travellers, film and entertainment industry.





**Letting Serviced Apartments**

Tel: +44 (0)1442 244497  
email: [info@lettingservicedapartments.co.uk](mailto:info@lettingservicedapartments.co.uk)  
[www.lettingservicedapartments.co.uk](http://www.lettingservicedapartments.co.uk)

- Corporate stays
- In between homes
- Renovation work
- Leisure stays
- Friends & family
- Insurance Work

Our luxury serviced apartments offer an ideal solution for short or longer term stays, from several days to several months. All our properties are fully equipped and include parking, Freeview TV and WiFi as well as a weekly clean and change of all linen. Our prices are very competitive and we offer a more relaxed homely feel compared to staying in a hotel.

Please call or email us for further details on the services we provide and our fully inclusive rates.

We cover St Albans, Watford,  
Hemel Hempstead, Chorleywood & Windsor



## HOTELS

**Ardmore House Hotel**

54 Lemsford Road, St Albans, AL1 3PR  
T: 01727 859313  
W: ardmorehousehotel.co.uk

**Aubrey Park Hotel** AA ★★★★★

Hemel Hempstead Road, Redbourn,  
Herts AL3 7AF  
T: 01582 792105 W: aubreyark.co.uk

**Clarion Collection Hotel** VE ★★★★★

Ryder House, Holywell Hill, St Albans AL1 1HG  
T: 01727 848849  
W: stalbanshotel.co.uk

**Innkeepers Lodge, Colney Fox**

1 Barnett Road, London Colney AL2 1BL  
T: 01727 823698  
W: innkeeperslodge.com

**Luton Hoo Hotel, Golf & Spa**

AA ★★★★★ 🍷 🍷  
The Mansion House, Luton Hoo,  
Beds LU1 3TQ  
T: 01582 734437 W: lutonhoo.com

**Mercure St Albans Noke Hotel**

Watford Road, St Albans, Herts, AL2 3DS  
T: 01727 854252  
W: mercure.com

**Premier Inn St Albans**

AA Budget Hotel  
1 Adelaide St, St Albans AL3 5EB  
T: 0333 3219331  
W: www.premierinn.com

**Premier Inn Bricket Wood**

AA Budget Hotel  
Smug Oak Lane, Watling Street,  
Bricket Wood AL2 3PN  
T: 0333 3219018 W: premierinn.com

**Premier Inn Luton South**

AA Budget Hotel  
London Road, Markyate, St Albans,  
Herts AL3 8HT  
T: 0333 777 4667 W: premierinn.com

**Sopwell House** AA ★★★★★ 🍷 🍷

Cottonmill Lane, St Albans, Herts. AL1 2HQ  
T: 01727 750499  
W: www.sopwellhouse.co.uk

**St Michael's Manor** AA ★★★★★ 🍷 🍷

Fishpool Street, St Albans, AL3 4RY  
T: 01727 864 444  
W: stmichaelsmanor.com

**White Hart Hotel**

23-25 Holywell Hill, St Albans, Herts, AL1 1EZ  
Tel: 01727 853624  
W: whitehartotelstalban.co.uk

## GUEST HOUSES

**Appleside Bed & Breakfast**

39 The Park, St Albans, AL1 4RX  
T: 01727 856324  
W: appleside.co.uk

**Fleuchary House** VE ★★★★★

29 Upper Lattimore Road, St Albans, AL1 3UA  
T: 01727 766764 M: 07973 423635  
W: 29stalban.com

**Park House**

30 The Park, St Albans, AL1 4RY  
T: 01727 811910  
W: parkhouseonline.co.uk

**The Goat Inn**

37 Sopwell Lane, St Albans, AL1 1RN  
T: 01727 833934  
W: goatinn.co.uk

**The Kent Guest House**

5 Approach Road, St Albans, AL1 1SP  
T: 07944 837533  
E: eileenkent@aol.com

**The Lower Red Lion**

36 Fishpool St, St Albans AL3 4RX  
T: 01727 855669  
W: thelowerredlion.co.uk

**The Old Cock Inn, Harpenden**

58 High Street, Harpenden, AL5 2SP  
T: 01582 712649  
W: oldcockinnharpenden.co.uk

**The Silver Cup**

5 St Albans Road, Harpenden, AL5 2JF  
T: 01582 713095  
W: silvercupinharpenden.co.uk

**The White House (Guest House)**

28 Salisbury Avenue, St Albans, AL1 4TU  
T: 01727 861017

**Torrington Hall**

47 Holywell Hill, St Albans AL1 1HD  
T: 01727 841199  
W: torringtonhall.com

**Wren Lodge (Guest House)**

24 Beaconsfield Rd, St Albans, AL1 3RB  
T: 01727 855540  
W: wrenlodge.co.uk

## SELF-CATERING AND SERVICED APARTMENTS

**H-Star Apartment Rental**

Clayton House, Vaughan Road, AL5 4EF  
M: 07595 067703 M: 07710 307221  
T: 01582 460898 W: h-star.co.uk

**Harpenden House Serviced Apt.**

65 High Street, Harpenden, AL5 2SL  
T: 01582 761642 / 07770 921212  
W: harpendenhouse.co.uk

**HomefromHolme.com** VE ★★★★★

St Albans City Centre  
T: 01727 765756  
W: homefromholme.com

**Keyfield Terrace Serviced Apartments**

St Albans City Centre, AL1 1PL  
T: 01727 846726 M: 07799 143268  
W: keyfieldterrace servicedapartments.co.uk

**Letting Serviced Apartments**

Various locations around St Albans  
T: 01442 244497  
W: lettings servicedapartments.co.uk

**The Straw House** VE ★★★★★

1a Spicer Street, St Albans, AL3 4PH  
T: 01727 810673 / 07966 581333  
W: strawhousestalban.co.uk

**Torrington Hall**

47 Holywell Hill, St Albans AL1 1HD  
T: 01727 841199  
W: torringtonhall.com

Photo: Stephanie Belton





**By car:** close to the M1, A1(M) and M25 (Junctions 21a & 22), St Albans is easily accessible from all parts of the UK.



**Car Parking:** See map on pages 26-27 for the location of city centre car parks. Blue Badge holders can park for 3 hours free (Please display permit and time clock). Council car parks are free after 6.30pm daily and £1 all day on Sundays.



**By Rail:** St Albans City station is only 20 minutes away from London on the Thameslink line between Bedford and Brighton, connecting St Albans to London Luton airport, Gatwick airport, and London St Pancras International for Eurostar services.

St Albans Abbey station links to Watford Junction, for connections to London Euston, the West Midlands and the North via the West Coast mainline.

Both railway stations are a ten minute walk from the City centre.



**By Bus and Coach:** St Albans is well connected with services from North London, Welwyn Garden City, Hatfield, Luton and Watford. There's a helpful journey planner at [travelinesoutheast.org.uk](http://travelinesoutheast.org.uk). National Express coaches link the neighbouring towns of Hatfield and Hemel Hempstead with Stansted, Heathrow, Luton, Gatwick, Oxford and Cambridge.



**By Air:** Both London Luton Airport and Gatwick Airport are directly linked to St Albans by rail. Stansted and Heathrow airports are also easily accessible by road, bus and coach.

## St Albans Visitor Information

Contact details for the City's visitor information services are as follows:

**T:** 01727 864511 **E:** [vic@stalbands.gov.uk](mailto:vic@stalbands.gov.uk)

**W:** [enjoystalbands.com](http://enjoystalbands.com)

**St Albans Cathedral (Open: 8:30-5:30 daily)**

Sumpter Yard, St Albans AL1 1BY

**Verulamium Museum**

**(Open: 10-5:30 Mon-Sat, 2-5:30 Sun)**

St Michael's Street, St Albans AL3 4SW

**St Albans Museum + Gallery (Open: 10-5 Mon-Sat, 11-5 Sun)**

Town Hall, St Peter's Street, St Albans AL1 3DH



## Harpenden Information Point

**Address:** Town Hall, Leyton Road, Harpenden, Herts. AL5 2LX

**Open: Monday, Wednesday and Friday 10am-2pm**

**T:** 01582 768278 **W:** [harpenden.gov.uk](http://harpenden.gov.uk)

## Visit Herts

Hertfordshire has everything you need for a truly magical great day out or a sensational short break. From stunning stately homes to wild days out for the family, Hertfordshire is just waiting to be explored.

The official tourism website for the UK county of Hertfordshire, with plenty of ideas for great days out all year round.

**W:** [visitherts.co.uk](http://visitherts.co.uk)



## Access

**St Albans Shopmobility**

**Address:** Drover's Way, Car Park, St Albans AL3 5EB

**Open: Mon, Wed, Fri and Sat open 9:30am-4pm**

**Tue and Thurs open 10am-2pm**

**T:** 01727 819339

**Textphone number:** 01727 819570

**Changing Places:** facilities at Civic Centre, Westminster Lodge, and Cunningham Hub. See [changing-places.org](http://changing-places.org).



**AccessAble accessibility guide:**

For detailed access information, visit [AccessAble.co.uk](http://AccessAble.co.uk)



If you require this information in large print, on tape or in another language please contact 01727 864511.

**Disclaimer:** Whilst every care has been taken to ensure the accuracy of the information contained in this publication, St Albans City & District Council cannot accept responsibility for any errors or omissions.



SEE  
HEAR  
EAT  
DRINK  
PLAY  
STOP  
SHOP  
STAY  
ENJOY *StAlbans.com*

*It's easy to plan the perfect trip to our remarkable city. Discover what's on and where to go at [enjoystalbans.com](http://enjoystalbans.com)*



st albans  
bid

ST ALBANS

Stephanie Belton