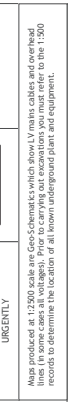
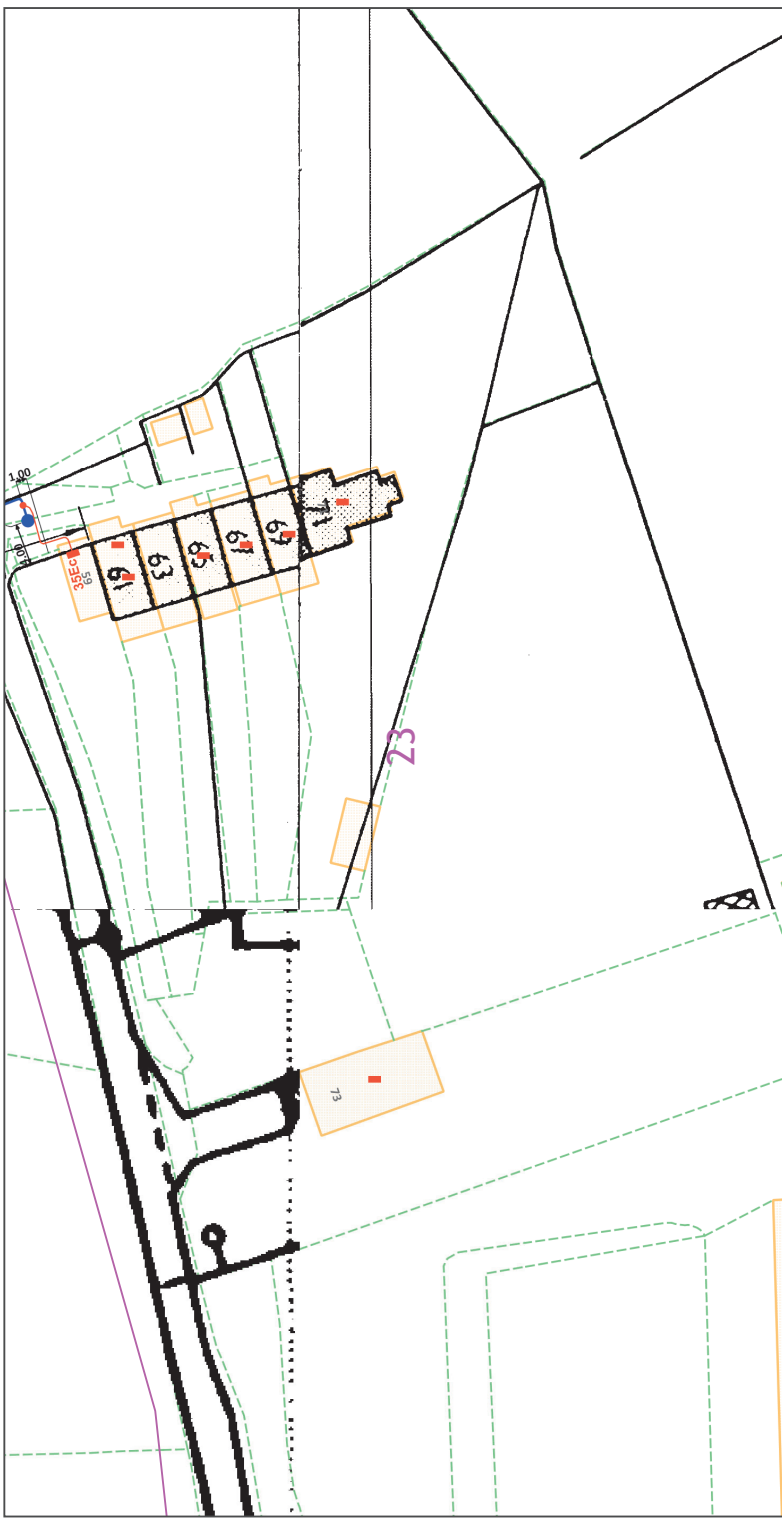
	<p>The quality and accuracy of any print will depend on your printer, your computer and its print settings. Measurements scaled from this plan may not match measurements between the same points on the ground.</p>
<p><b>103-01</b></p> <p>100mm</p>	<p>0 12.5 25 metres</p>	<p><b>Line:</b> ———</p> <p><b>Area:</b> □</p> <p><b>Dig Sites:</b> □</p>
<p><b>IF IN DOUBT - ASK PHONE</b> 0800 056 586 For any damage a cable or for damage a Phone 0800 783 8838 (24hrs) <b>URGENTLY</b></p>		
<p>1. UK Power Networks does not warrant that the information provided to you is correct. You rely upon it at your own risk. UK Power Networks does not exclude or limit its liability if it causes the death of any persons or causes personal injury to a person.</p> <p>2. UK Power Networks does not accept any liability for any loss of data, loss of business, loss of profits, loss of income, loss of opportunity, loss of contracts, loss of savings, loss of goodwill, loss of business, loss of use) or any special or consequential loss or damage whatsoever.</p> <p>3. This plan has been provided to you on the basis of the terms of the cover letter that accompanies this plan. It is your responsibility to ensure that the information provided to you is correct and that you have accepted the terms of the plan and must return it to the sender of this letter.</p> <p>4. This plan is provided to you on the basis of the information provided to you. It must not be given, sold or made available to any third party. UK Power Networks does not accept any liability for any loss of data, loss of business, loss of profits, loss of income, loss of opportunity, loss of contracts, loss of savings, loss of goodwill, loss of business, loss of use) or any special or consequential loss or damage whatsoever.</p> <p>5. All cables must be treated as being a service cable into each property, lamp column and street sign.</p> <p>6. The information provided must be given to all people who use UK Power Networks.</p> <p>7. Please be aware that electric cables/lines belonging to other owners of licensed electricity supply are not shown on this plan. If you are aware of any such cables/lines, please contact us via the contact details below.</p> <p>8. Please be aware that Low Voltage Overhead power lines are not currently displayed for the Eastern Region via this service; if you require records on the location of these please contact our Plan Production directly via <a href="mailto:plans@powernetworks.co.uk">plans@powernetworks.co.uk</a>.</p>		
<p>1. The position of the apparatus shown on this drawing is believed to be correct but the original drawings may have been altered since the apparatus was installed.</p> <p>2. The information provided must be given to all people who use UK Power Networks.</p> <p>3. This plan is provided to you on the basis of the information provided to you. It must not be given, sold or made available to any third party. UK Power Networks does not accept any liability for any loss of data, loss of business, loss of profits, loss of income, loss of opportunity, loss of contracts, loss of savings, loss of goodwill, loss of business, loss of use) or any special or consequential loss or damage whatsoever.</p> <p>4. It must be assumed that there is a service cable into each property, lamp column and street sign, until the exact location of all the cables has been determined.</p> <p>5. All cables must be treated as being a service cable into each property, lamp column and street sign.</p> <p>6. The information provided must be given to all people who use UK Power Networks.</p> <p>7. Please be aware that electric cables/lines belonging to other owners of licensed electricity supply are not shown on this plan. If you are aware of any such cables/lines, please contact us via the contact details below.</p> <p>8. Please be aware that Low Voltage Overhead power lines are not currently displayed for the Eastern Region via this service; if you require records on the location of these please contact our Plan Production directly via <a href="mailto:plans@powernetworks.co.uk">plans@powernetworks.co.uk</a>.</p>		
<p><b>Date Requested:</b> 23/07/2021 <b>Job Reference:</b> 22778282 <b>Site Location:</b> 517403_204375 <b>Requested by:</b> Mrs Amy Helford <b>Your Scheme/Reference:</b> 26728 <b>Scale:</b> 1:500 (When plotted at A4)</p>		
<p>Reproduced by permission of Ordnance Survey on behalf of HMASO. © Crown copyright and database right. 2020. All rights reserved. Ordnance Survey Licence numbers 100019626, 100019626 and 100019450. Data has been added to the Ordnance Survey base map. All proprietary rights in such additional data are and shall remain the exclusive property of © London Power Networks plc or South Eastern Power Networks plc, each being a distribution licensee under section 6(1)(c) of the Electricity Act 1989 for the relevant distribution service area as that term is defined in such licensee's distribution licence. All rights in such data reserved. Plans generated by digMAP Pro™ software provided by Unearthed Intelligence.</p>		

**ALWAYS LOOK UP BEFORE YOU DIG**  
Refer to HSE Guidance note G56



Also produced at 1:2500 scale are GeoSchematics which show LV mains cables and overhead lines (in some cases all voltages). Prior to carrying out excavations you must refer to the 1:500 records to determine the location of all known underground plant and equipment.



This plan must be used with the attached 'Symbols' document.

Date Requested: 23/07/2021  
 Job Reference: 22778282  
 Site Location: 517403\_204375  
 Requested by: Mrs Amy Helford  
 Your Scheme/Reference: 26728  
 Scale: 1:500 (When plotted at A4)

Reproduced by permission of Ordnance Survey on behalf of HMSO. © Crown copyright and database right, 2020. All rights reserved. Ordnance Survey Licence numbers 100019626, 100019626 and 100019450. Data has been added to the Ordnance Survey base map. All proprietary rights in such additional data are and shall remain the exclusive property of © London Power Networks plc or Eastern Power Networks plc, each being a distribution licensee under section 6(1)(c) of the Electricity Act 1989 for the relevant distribution service area as that term is defined in such licensee's distribution licence. All rights in such data reserved.  
 Plans generated by digMAP Pro™ software provided by linesearchtechnology.

1. The position of the apparatus shown on this drawing is believed to be correct but the original landmarks may have been altered since the apparatus was installed.  
 2. The information provided must be given to all people who dig near UK Power Networks plant and to excavation contractors using hand tools.  
 3. The information provided must be given to all people who dig near UK Power Networks plant and to excavation contractors using hand tools.  
 4. It must be assumed that there is a service cable into each property, lamp column and street sign.  
 5. All cables must be treated as being live unless proved otherwise by UK Power Networks.  
 6. The information provided must be given to all people who dig near UK Power Networks plant and to excavation contractors using hand tools.  
 7. Please be aware that electric cables/lines belonging to other owners of licensed electricity supply are shown on this plan and are not necessarily owned by UK Power Networks.  
 8. Please be aware that Low Voltage overhead power lines are not currently displayed for the Eastern Region via this service; if you require records on the location of these please contact our Plan Production directly via [plans@powernetworks.co.uk](mailto:plans@powernetworks.co.uk).

The quality and accuracy of any print will depend on your printer, your computer and its print settings. Measurements scaled from this plan may not match measurements between the same points on the ground.

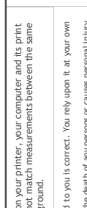
1. UK Power Networks does not warrant that the information provided to you is correct. You rely upon it at your own risk. UK Power Networks does not exclude or limit its liability if it causes the death of any person or causes personal injury to a person.  
 2. UK Power Networks does not warrant that the information provided to you is correct. You rely upon it at your own risk. UK Power Networks does not exclude or limit its liability if it causes the death of any person or causes personal injury to a person.  
 3. UK Power Networks does not warrant that the information provided to you is correct. You rely upon it at your own risk. UK Power Networks does not exclude or limit its liability if it causes the death of any person or causes personal injury to a person.  
 4. UK Power Networks does not warrant that the information provided to you is correct. You rely upon it at your own risk. UK Power Networks does not exclude or limit its liability if it causes the death of any person or causes personal injury to a person.  
 5. UK Power Networks does not warrant that the information provided to you is correct. You rely upon it at your own risk. UK Power Networks does not exclude or limit its liability if it causes the death of any person or causes personal injury to a person.  
 6. UK Power Networks does not warrant that the information provided to you is correct. You rely upon it at your own risk. UK Power Networks does not exclude or limit its liability if it causes the death of any person or causes personal injury to a person.  
 7. UK Power Networks does not warrant that the information provided to you is correct. You rely upon it at your own risk. UK Power Networks does not exclude or limit its liability if it causes the death of any person or causes personal injury to a person.  
 8. UK Power Networks does not warrant that the information provided to you is correct. You rely upon it at your own risk. UK Power Networks does not exclude or limit its liability if it causes the death of any person or causes personal injury to a person.

IF IN DOUBT - ASK PHONE  
 0800 054 586  
 EMERGENCY CALLS  
 0800 783 8838 (24hrs)  
 URGENTLY

ALWAYS LOOK UP  
 BEFORE  
 YOU DIG  
 Refer to HSE Guidance  
 note G56

Also produced at 1:2500 scale are GeoSchematics which show LV mains cables and overhead lines (in some cases all voltages). Prior to carrying out excavations you must refer to the 1:500 records to determine the location of all known underground plant and equipment.

Legend:  
 Dig Sites Area: Line:



IF IN DOUBT - ASK PHONE  
 0800 054 586  
 EMERGENCY CALLS  
 0800 783 8838 (24hrs)  
 URGENTLY

ALWAYS LOOK UP  
 BEFORE  
 YOU DIG  
 Refer to HSE Guidance  
 note G56

Also produced at 1:2500 scale are GeoSchematics which show LV mains cables and overhead lines (in some cases all voltages). Prior to carrying out excavations you must refer to the 1:500 records to determine the location of all known underground plant and equipment.



## UK Power Networks Feedback Tool

Please help UK Power Networks improve the accuracy of their network records and help make it safer for all those working around them in future.

All you need to do is:

1. Use your phone camera to scan the QR code:
2. Provide feedback on what you have found on site (good or bad)
3. Upload a photo if needed



Thank you for making the area a safer place to dig.

**UK Power Networks, working with LSBUD**



**Registered Office**  
Newington House  
237 Southwark Bridge Road  
London SE1 6NP

**Company:**  
UK Power Networks  
(Operations) Limited

Registered in England and Wales No: 3870728

Mrs Claire Hosford  
M-EC  
The Old Chapel  
Station Road  
Hugglescote  
COALVILLE  
Leicestershire  
LE67 2GB

Date: 14 September 2021

Our Ref: 8500190282 / QID 3000035879

Dear Mrs Hosford

### **Site Address: Chiswell Green Lane / ST. ALBANS AL2 3AJ**

Thank you for your recent enquiry regarding the above premises. I am writing to you on behalf of Eastern Power Networks plc the licensed distributor of electricity for the above address trading as UK Power Networks.

I am pleased to be able to provide you with a budget estimate for the work.

It is important to note that this budget estimate is intended as a guide only. It may have been prepared without carrying out a site visit or system studies. No enquiry has been made as to the availability of consents or the existence of any ground conditions that may affect the ground works. It is not an offer to provide the connection and nor does it reserve any capacity on UK Power Networks electricity distribution system.

#### **Budget estimate:**

The budget estimation for this work is:

For UK power Networks to shutdown the HV network and run two new HV cables to site, from here UKPN will install 2x 500KVA transformers with Ring Main Units at each end of the site. LV cables will then be laid across site from each of these new transformers and 330x single phase supplies will be installed to provide site with a total load of 660KVA.

UKPN will carry out all excavation/reinstatement in public land and the customer will carry out all excavation/reinstatement on site.

#### **High Voltage Point Of Connection**

£840,000 (exclusive of VAT) if the Point Of Connection (POC) is to our High Voltage network along Chiswell Green Lane as per above.

#### **Assumptions**

This budget estimate is based on the following assumptions:

- The most appropriate Point of Connection (POC) is as described above.
- A viable cable or overhead line route exists along the route we have assumed between the Point of Connection (POC) and your site.

- In cases where the Point of Connection (POC) is to be at High Voltage, that a substation can be located on your premises at or close to the position we have assumed.
- Where electric lines are to be installed in private land UK Power Networks will require an easement in perpetuity for its electric lines and in the case of electrical plant the freehold interest in the substation site, on UK Power Networks terms, without charge and before any work commences.
- You will carry out, at no charge to UK Power Networks, all the civil works within the site boundary, including substation bases, substation buildings where applicable and the excavation/reinstatement of cable trenches.
- Unless stated in your application, all loads are assumed to be of a resistive nature. Should you intend to install equipment that may cause disturbances on UK Power Networks' electricity distribution system (e.g. motors; welders; etc.) this may affect the estimate considerably.
- All UK Power Networks' work is to be carried out as a continuous programme of work that can be completed substantially within 12 months from the acceptance of the formal offer.

Please note that if any of the assumptions prove to be incorrect, this may have a significant impact on the price in any subsequent quotation. You should note also that UK Power Networks' formal connection offer may vary considerably from the budget estimate. If you place reliance upon the budget estimate for budgeting or other planning purposes, you do so at your own risk.

### Post estimate call

I will contact you within the next few days to discuss your estimate, to ensure you understand the work we will do for the estimated price, your responsibilities, any dependencies and the likely timescales for the work. UK Power Networks are always looking to improve our service offering and as such, the post estimate call may be recorded for training purposes. We will not share the recorded call with anyone outside of our connections business and it will be deleted as soon as we have completed the training review. However, if you do not want us to record the call please let me know at the beginning of the call.

### If you would like to proceed

If you would like to proceed to a formal offer of connection then you should apply for a quotation. Please refer to our website [click here](#) for 'The connection process' which details our application process.

To help us progress any future enquiry as quickly as possible please quote the UK Power Networks Reference Number from this letter on all correspondence.

### Any Questions?

If you have any questions about your budget estimate or need more information, please do not hesitate to contact me. The best time to call is between the hours of 9am and 4pm, Monday to Friday. If the person you need to speak to is unavailable or engaged on another call when you ring, you may like to leave a message or call back later.

Yours sincerely



Mr. James Marriott  
Unit 5, York Way  
Hertfordshire, Borehamwood  
WD6 1DJ

07706 000 739

JAMES.MARRIOTT@UKPOWERNETWORKS.CO.UK

**APPENDIX F**

# Maps by email Plant Information Reply



## IMPORTANT WARNING

Information regarding the location of BT apparatus is given for your assistance and is intended for general guidance only. No guarantee is given of its accuracy. It should not be relied upon in the event of excavations or other works being made near to BT apparatus which may exist at various depths and may deviate from the marked route.



# openreach

**CLICK BEFORE YOU DIG**  
FOR PROFESSIONAL FREE ON SITE ASSISTANCE PRIOR TO COMMENCEMENT OF EXCAVATION WORKS INCLUDING LOCATE AND MARKING SERVICE

email [cbyd@openreach.co.uk](mailto:cbyd@openreach.co.uk)

ADVANCE NOTICE REQUIRED  
(Office hours: Monday - Friday 08.00 to 17.00)  
[www.openreach.co.uk/cbyd](http://www.openreach.co.uk/cbyd)

### Accidents happen

If you do damage any Openreach equipment please let us know by calling 0800 023 2023 (opt 1 + opt 1) and we can get it fixed ASAP

Reproduced from the Ordnance Survey map by BT by permission of Ordnance Survey on behalf of the Controller of Her Majesty's Stationary Office  
(C) Crown Copyright British Telecommunications plc 100028040

## KEY TO BT SYMBOLS

	Planned	Live
PCP		
Pole		
Box		
Manhole		
Cabinet		

## Change Of State

Split Coupling	
Duct Tee	
Building	
Kiosk	

Other proposed plant is shown using dashed lines.  
BT Symbols not listed above may be disregarded.  
Existing BT Plant may not be recorded.  
Information valid at time of preparation. Maps are only valid for 90 days after the date of publication.

## Hatchings

Built	
Planned	
Inferred	
Duct	

	Pending Add	In Place	Pending Remove	Not in Use
Power Cable				
Power Duct				N/A

BT Ref : CRS035871

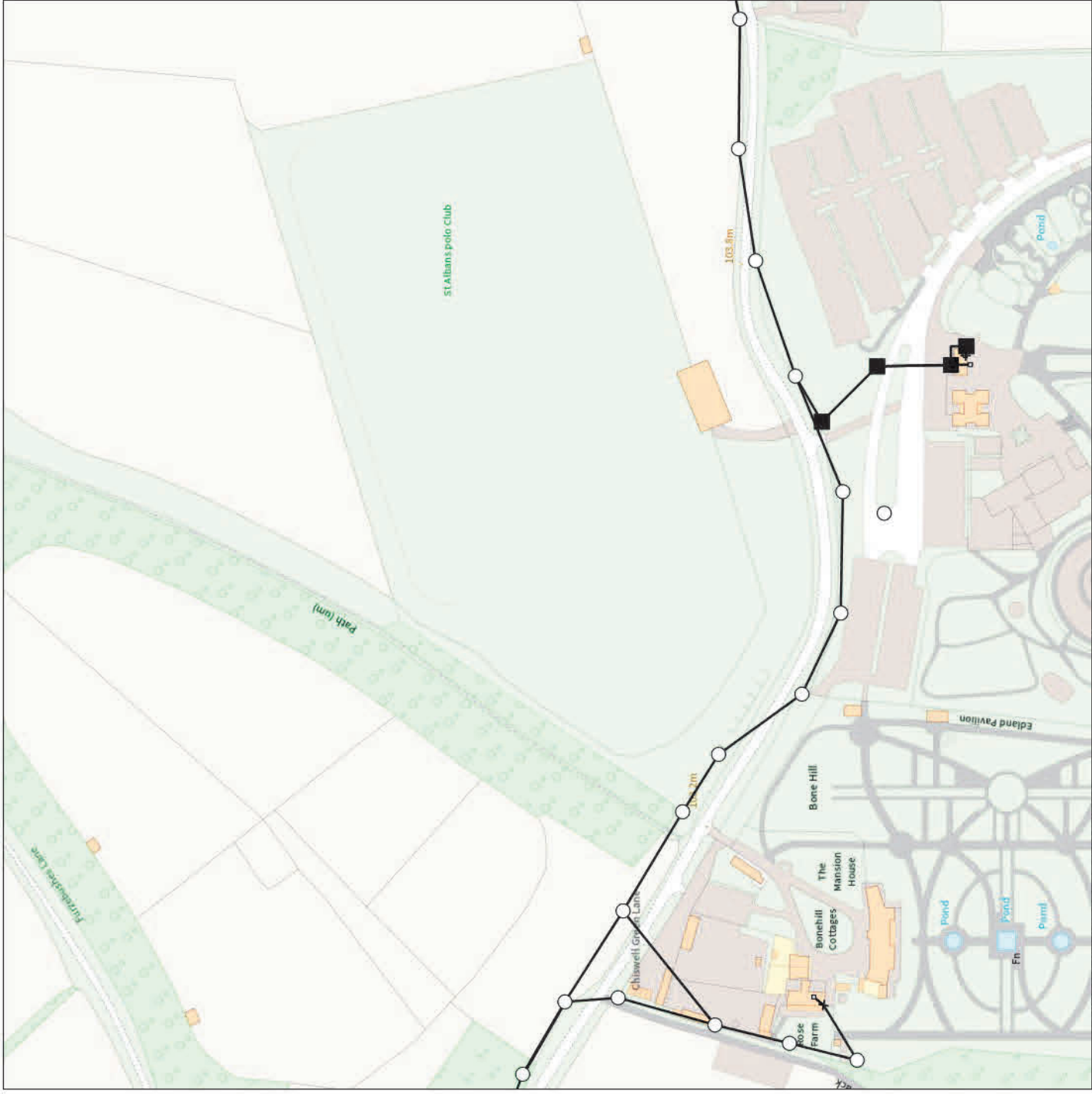
Map Reference : (centre) TL1284404723

Easting/Northing : (centre) 512844, 204723

Issued : 23/07/2021 15:58:39

**WARNING: IF PLANNED WORKS FALL INSIDE HATCHED AREA IT IS ESSENTIAL BEFORE PROCEEDING THAT YOU CONTACT THE NATIONAL NOTICE HANDLING CENTRE. PLEASE SEND E-MAIL TO: [nnhc@openreach.co.uk](mailto:nnhc@openreach.co.uk)**

# Maps by email Plant Information Reply



## IMPORTANT WARNING

Information regarding the location of BT apparatus is given for your assistance and is intended for general guidance only. No guarantee is given of its accuracy. It should not be relied upon in the event of excavations or other works being made near to BT apparatus which may exist at various depths and may deviate from the marked route.



# openreach

**CLICK BEFORE YOU DIG**  
FOR PROFESSIONAL FREE ON SITE ASSISTANCE PRIOR TO COMMENCEMENT OF EXCAVATION WORKS INCLUDING LOCATE AND MARKING SERVICE

email [cbyd@openreach.co.uk](mailto:cbyd@openreach.co.uk)

ADVANCE NOTICE REQUIRED  
(Office hours: Monday - Friday 08.00 to 17.00)  
[www.openreach.co.uk/cbyd](http://www.openreach.co.uk/cbyd)

## Accidents happen

If you do damage any Openreach equipment please let us know by calling 0800 023 2023 (opt 1 + opt 1) and we can get it fixed ASAP

## KEY TO BT SYMBOLS

PCP	KEY TO BT SYMBOLS		Change Of State	Hatchings
	Planned	Live		
			Split Coupling	
Pole			Duct Tee	
Box			Building	
Manhole			Kiosk	
Cabinet			Other proposed plant is shown using dashed lines. BT Symbols not listed above may be disregarded. Existing BT Plant may not be recorded. Information valid at time of preparation. Maps are only valid for 90 days after the date of publication.	
			Pending Remove	
Power Cable				
Power Duct				

BT Ref : YQM085871

Map Reference : (centre) TL1267804595

Easting/Northing : (centre) 512678,204595

Issued : 26/07/2021 08:58:53

Reproduced from the Ordnance Survey map by BT by permission of Ordnance Survey on behalf of the Controller of Her Majesty's Stationary Office

(C) Crown Copyright British Telecommunications plc 100028040

**WARNING: IF PLANNED WORKS FALL INSIDE HATCHED AREA IT IS ESSENTIAL BEFORE PROCEEDING THAT YOU CONTACT THE NATIONAL NOTICE HANDLING CENTRE. PLEASE SEND E-MAIL TO: [nnhc@openreach.co.uk](mailto:nnhc@openreach.co.uk)**





Site Plan No. 000017 - 1  
 Date: 20/03/2023  
 Drawn by: J. DUNN  
 Checked by: J. DUNN  
 Scale: 1:500  
 Map Date: 13/09/2022  
 Drawn by: J. DUNN

1. This plan is a site plan for the development of a residential development at the site shown on the map. The site is located at the intersection of Wyvern Drive and Wyvern Drive (New). The site is bounded to the north by Wyvern Drive, to the east by Wyvern Drive (New), to the south by Wyvern Drive, and to the west by Wyvern Drive. The site is currently vacant land. The proposed development consists of a residential development of approximately 100 dwellings. The development is proposed to be built on the site shown on the map. The development is proposed to be built on the site shown on the map. The development is proposed to be built on the site shown on the map.

2. The development is proposed to be built on the site shown on the map. The development is proposed to be built on the site shown on the map. The development is proposed to be built on the site shown on the map.

3. The development is proposed to be built on the site shown on the map. The development is proposed to be built on the site shown on the map. The development is proposed to be built on the site shown on the map.

4. The development is proposed to be built on the site shown on the map. The development is proposed to be built on the site shown on the map. The development is proposed to be built on the site shown on the map.

5. The development is proposed to be built on the site shown on the map. The development is proposed to be built on the site shown on the map. The development is proposed to be built on the site shown on the map.



6. The development is proposed to be built on the site shown on the map. The development is proposed to be built on the site shown on the map. The development is proposed to be built on the site shown on the map.

7. The development is proposed to be built on the site shown on the map. The development is proposed to be built on the site shown on the map. The development is proposed to be built on the site shown on the map.

8. The development is proposed to be built on the site shown on the map. The development is proposed to be built on the site shown on the map. The development is proposed to be built on the site shown on the map.

9. The development is proposed to be built on the site shown on the map. The development is proposed to be built on the site shown on the map. The development is proposed to be built on the site shown on the map.

10. The development is proposed to be built on the site shown on the map. The development is proposed to be built on the site shown on the map. The development is proposed to be built on the site shown on the map.

M-EC Consulting Development Engineers  
The Old Chapel  
Station Road  
Hugglescote  
Leicester  
LE67 2GB

Our Ref: IL/860290/KJ  
Your Ref: e-mail 02/08/2021  
24th August 2021

**FAO: Claire Hosford**

Dear Sir/Madam

**Development at Chiswell Green Lane, Chiswell Green, St Albans. AL2 3AJ**

Thank you for your enquiry forwarded from our Openreach alterations front office to assess the impact of your proposals upon our existing infrastructure.

An initial investigation of the above site proposals has been completed, and a detailed survey is now required to confirm that anticipated alterations to Openreach apparatus are the most cost effective means of protecting our network. Your proposals have been registered as works applicable to The Electronic Communications Code (“the 2017 Code”), Schedule 3A of the Communications Act 2003 and in line with Paragraph 16, Schedule 2, Transitional Provisions of the Digital Economy Act 2017

The estimated cost to provide a detailed estimate and specification for this work is **£7,132.50** (inclusive of VAT), which we will require in advance although the actual costs will be charged, whether more or less than this.

Because we consider a detailed investigation is essential to ensure our network is protected, we will contact you within 30 working days if payment has not been received unless you inform us that your proposals or circumstances have changed.

After receipt of payment, we will contact you where necessary and if there is no alternative to the alterations work, we will provide a single detailed estimate of the costs and a specification. However, if your proposals are not suitably detailed, then we may agree to provide a budget costing in advance of this. We would normally expect to complete this within 25 working days when we will also inform you of the next steps. If our expense is likely to exceed the advance payment you have made, particularly if additional or alternative costings are required, then further payments will be requested from you.

After provision of the final detailed estimate and your agreement to the associated specification, we will review our expenditure and provide a final invoice to settle the costs for this work before moving on to the next stage of the project.

If you have not already done so, please ensure you include preferred contact details, detailed plans and any supporting information for your proposals along with the advance payment.

See over for payment details.

Please note that we offer a site visit service to locate and mark the position of Openreach apparatus within your work area. To arrange a site visit from a Plant Protection Officer email [cbvd@openreach.co.uk](mailto:cbvd@openreach.co.uk)

Openreach also provides a "Maps-by-Email" service to enable you to receive a copy of our plant records. If you haven't used this service before and would like to, please go to the following URL: <http://www.ournetwork.openreach.co.uk/locating-our-network/maps-by-email.aspx>

Please be aware that any duct and poles owned and controlled by Openreach can be used by third party communications providers (CP) for the installation of their cables and apparatus if they have a contract with us for our Physical Infrastructure Access (PIA) product. The CP must, however, place an Order with us for PIA before they install their cables or apparatus. If such CP cables or apparatus are identified in our network within your area of interest, I will identify a contact for the affected CP and advise them of your proposals. I will pass these contact details on to you and liaise with the CP so that they are aware of any diversionary requirements relating to your proposals. You will be contacted directly by the affected third party CP – they will advise you of any associated chargeable costs relating to their cable and apparatus diversions. If you have any queries or concerns relating to this aspect of the Openreach operated network, please don't hesitate in contacting me. Please note Openreach Ltd. will not be held liable for any delays, costs, losses or damage caused by the third party CP.

Yours faithfully



Karl Jones  
Repayments Project Engineer

**Repayments (Alterations)**

PP 6/41C  
Mill House  
11 Ilford Hill  
Ilford  
IG1 2BZ

**tele:** 0+442032518299

**fax:** 0+441332578929

**mob:** 0+447739659998

**email:** [karl.d.jones@openreach.co.uk](mailto:karl.d.jones@openreach.co.uk)

**Openreach Limited**

Registered Office: Kelvin House  
123 Judd Street, London WC1H 9NP  
Registered in England and Wales no. 10690039

## Payment Details

There are three ways to pay the standard charge (£7,132.50 including VAT).

1. By Cheque
  - This is our preferred method of payment
  - Please make cheques payable to **British Telecommunications Plc**
  - Send your cheque with your order / letter of authorisation to proceed with the works to the Project Engineer shown below (order not to contain contractual conditions)
  - If an invoice is required to make payment, then contact the project engineer shown below, otherwise a retrospective invoice will be dispatched to you.
  - Write your cheque number here: \_\_\_\_\_
  - Write the cheque amount here: £ \_\_\_\_\_

2. Using Bank Automated Clearing Services (BACS)

When your order / letter of authorisation to proceed with the works has been received an invoice for payment will be returned with the necessary BACS payment details.

3. Telephone Credit Card Payments, to pay by credit card simply call our dedicated card payment team on Freephone 0808 100 0834, the opening hours are 9am to 4.30pm Monday to Friday.

**Please quote the Openreach reference number / invoice number otherwise payment may not be allocated to your job.**

-----

**N.B. For either method of payment please complete this form and return with your order / letter of authorisation to the Project Engineer, address below. Please remember, however you pay, the works will not commence until this form and your payment have been received.**

<b>Title/Location of Work</b>	Chiswell Green Lane, Chiswell Green, St Albans. AL2 3AJ
<b>Project Engineer Name</b>	Karl Jones
<b>Postal Address</b>	PP6/41C Mill House, 11 Ilford Hill, Ilford, Essex. IG1 2BZ
<b>Openreach Reference</b>	IL/860290/KJ
<b>Client's Company Name</b>	
<b>Client Billing Address</b>	
<b>Client Contact</b>	
<b>Client Tel</b>	

For advice or assistance in completing this form please call Jane Goodison 0131 345 0016 for all other queries contact the Project Engineer named above.

Our VAT number is **245719348**

Our Openreach reference must be quoted for all methods of payment.

**1 Telephone Payments**

To pay by credit card or debit card, simply call our dedicated card payments team on **Freephone 0808 100 0834**. Our opening hours are 9am to 4.30pm Monday to Friday.

**2 Bank Automated Clearing Services (BACS)\* (online through your own bank account)**

Our Bank Barclays Bank, 1 Churchill Place, Canary Wharf, London E14 5HP  
Our Bank Sort Code: 20-00-00  
Our Bank Account Number: 00835757  
Bank Identifier Code (Swift Code) BARCGB22  
IBAN (International Account No) GB20 BARC 2000 0000 835757  
Our Openreach Reference: Shown on payment counterfoil

**\*For BACS payments, a remittance advice, quoting your details, and our Openreach reference, must be submitted.**

Please send your remittance to:

email: [baacs1.sth@bt.com](mailto:baacs1.sth@bt.com)

Fax: 01908 862290

Post: BT Payments Services Ltd, BT Telephone Centre, Durham. DH98 1BT

**3 By Cheque**

Make cheques payable to British Telecommunications PLC.

Please post the cheque and the counterfoil to:

**Openreach, PP EH62B, Eldon House, Charter Row, Sheffield. S1 3EF**

**REFUNDS POLICY**

Where appropriate, a refund will be made by cheque, BACS or to the Credit/Debit card from which payment was taken.

**LEGAL COSTS AND INTEREST**

Please note that in circumstances where BT plc has issued legal proceedings, this payment may not be accepted in full and final settlement.

Where applicable, legal costs and interest will remain outstanding, and must be paid in full.

**CIS DETAILS**

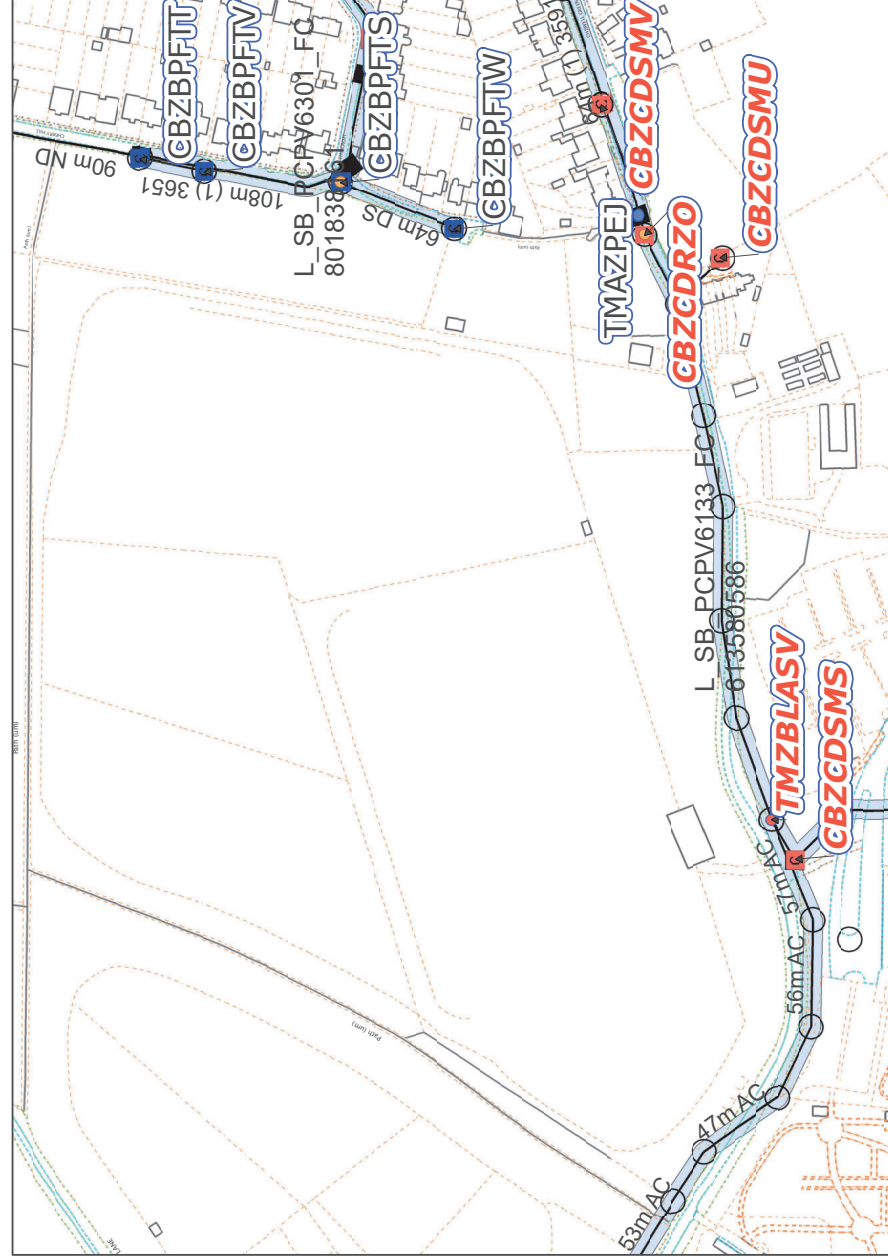
Company Unique TAX Reference (UTR) 93520 03146

Company Name : BRITISH TELECOMMUNICATIONS PLC

Company Trading Name : BT

Company Registration Number : 01800000

**BT VAT REG NO 245719348**



**Legend**

- CAUTION AREA**  
 BT CAUTION AREA
- EQUIPMENT**  
 FIBRE, TOODE  
 COPPER, CABINET  
 COPPER, DP
- DUCT**  
 AERIAL  
 TUNNEL  
 DUCT
- PROPOSED**  
 AERIAL  
 DUCT
- STRUCTURE**  
 YCODE  
 CABINET SHELL  
 SPLIT COUPLING  
 POLE  
 KIOSKS  
 MANHOLE  
 JOINTBOX  
 CHANGE OF STATE  
 DUCT TEE
- PROPOSED**  
 MANHOLE  
 JOINTBOX  
 DUCT TEE

Other proposed plant is shown using dashed lines.

Reproduced by permission of Ordnance Survey on behalf of HMSO. © Crown copyright and database right 2013. All rights reserved. Ordnance Survey Licence number 100028240

**IMPORTANT WARNING:**  
 Information regarding the location of BT apparatus is for guidance only. No guarantee is given of its accuracy. It should not be relied upon in the event of an emergency. It may vary at various depths and may deviate from the marked route.

Existing BT plans may not be recorded. Information valid at time of preparation. FOR FREE ON-SITE LOCATION & MARKING SERVICE CALL THE EXCHANGE OPERATOR AND ASK FOR 'FREEPHONE/DIAL-BEFORE-YOU-DIG'



**NOTES**

IL8 60290/KJ  
 Chiswell Green Lane, Chiswell Green, St Albans, AL12 3AJ



**APPENDIX G**

Claire Hosford  
MEC  
The Old Chapel  
Station Road  
Hugglescote  
Leicestershire  
LE67 2GB

Our Reference: T2122256-001  
Status: budget

10/09/21

Dear Claire,

In reference to: T2122256 - Chiswell Green Lane St Albans

Thank you for requesting budget costs associated with the new supplies. Following our conversation and emails, I have reviewed the works required and adjusted the scope to include those facts required.

This budget cost is based upon and allows for the following;

- We have **assumed** the 1no. HV and MP not local to site.
- 330no. Units
- All HV, LV & gas mains to be within adoptable roads/Clients Land.
- We have allowed for standard traffic management.
- No reinforcement works, disconnections, diversions have been included within this price.
- 1No. substation and 1no. GRP have been allowed for.
- 1No. PRI has been included.
- All offsite civil works by HVSS.
- All onsite civil works by others.
- Subject to third party land issues.

### What Happens Next

Should you wish to progress this budget quote into a firm quotation then we will require some additional information listed below from yourselves to enable us to provide this. Upon receipt of this information, it typically takes 4 weeks to obtain a point of connection from the host network operator, we are then normally able to provide the quote within 1 week of receiving this information.

#### For all Connections

- Required Electrical Load per unit in kVA or KW
- Site Layout Plan in AutoCAD dwg format
- Preferred substation location
- Planned Site Commencement date
- A direct contact for discussing design and technical details relating to the project
- Details of any embedded generation e.g. PV, CHP etc

#### Additional for Residential Supplies.

- No. of Residential dwellings
- Type of space heating e.g. gas or electric
- Installed electric space heating load per dwelling





- Details of number of Land Lord's supplies and electrical loads required

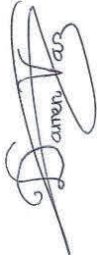
As you are at an early stage, it is worth pointing out that there are certain design requirements that have to be met relating to the location of substations and metering equipment - the key ones being:

- Substations must be sited as near to the highway as practical and in every case, have unrestricted 24hr access for a HIAB HGV type vehicle to facilitate emergency replacement.
- Each substation will require the freehold or long leasehold transfer of a 5m x 5m plot of land and all cable routes on site will require permanent legal easements. Please note that supplies cannot be made live until these legal documents have been cleared.

If the above proposal encompasses what you require, we anticipate the confirmed price to be approximately **£298,750.00**

I trust that this proposal fulfills the requirement that you have and meets with expectations.

Yours sincerely

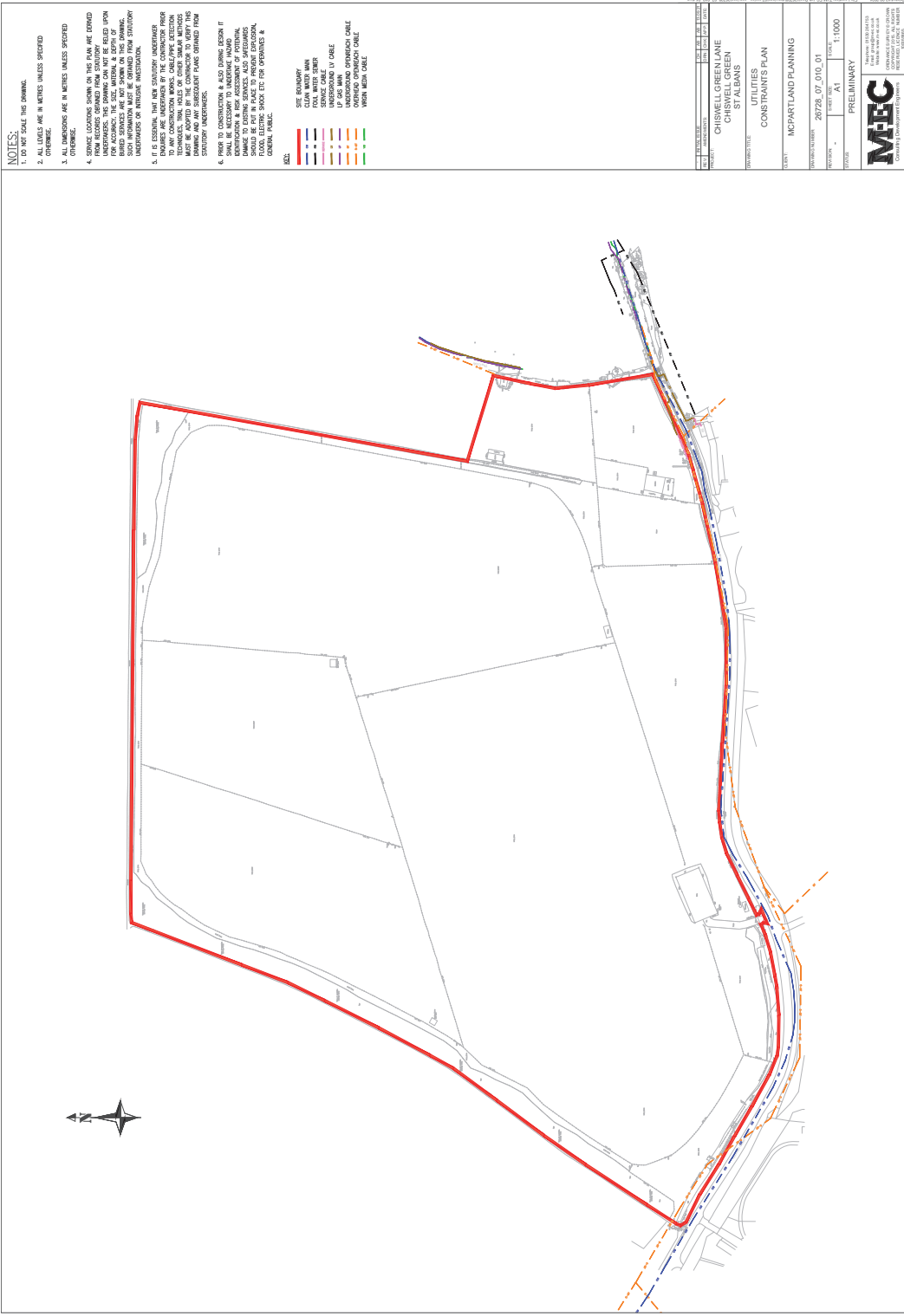


Darren Vaz  
Tendering/planning Engineer

DDI: 01604 801254  
T : 01604 781107  
24H : 0800 988 2144  
M : 07712 522241  
E : Darren.Vaz@hvss.uk.com



**APPENDIX H**



**NOTES:**

1. DO NOT SCALE THIS DRAWING.
2. ALL DIMENSIONS ARE IN METRES UNLESS SPECIFIED OTHERWISE.
3. ALL DIMENSIONS ARE IN METRES UNLESS SPECIFIED OTHERWISE.
4. SERVICE LOCATIONS SHOWN ON THIS PLAN ARE DERIVED FROM RECORDS OBTAINED FROM STATUTORY AUTHORITIES. THE CLIENT ACCEPTS THE ACCURACY OF THE DATA PROVIDED AND THE CLIENT'S RESPONSIBILITY FOR OBTAINING THE NECESSARY INFORMATION TO VERIFY THE ACCURACY OF THE DATA PROVIDED. SUCH INFORMATION MUST BE OBTAINED FROM STATUTORY AUTHORITIES OR INDEPENDENT INVESTIGATION.
5. IT IS ESSENTIAL THAT ANY STATUTORY UNDERPINNING OF ANY CONSTRUCTION WORKS, OR LAYOUT, BE OBTAINED FROM STATUTORY AUTHORITIES. THE CLIENT ACCEPTS THE ACCURACY OF THE DATA PROVIDED AND THE CLIENT'S RESPONSIBILITY FOR OBTAINING THE NECESSARY INFORMATION TO VERIFY THE ACCURACY OF THE DATA PROVIDED. SUCH INFORMATION MUST BE OBTAINED FROM STATUTORY AUTHORITIES OR INDEPENDENT INVESTIGATION.
6. SOIL BEING EXCAVATED IN ANY CONSTRUCTION IT SHOULD BE THE IN PLACE TO PREVENT EXCESSIVE SETTLEMENT, SLIDING, ETC FOR OPERATIONS & MAINTENANCE.

**KEY:**

- SITE BOUNDARY
- CLEAN WATER MAIN
- FOUL WATER MAIN
- SERVICE CABLE
- OVERHEAD LV CABLE
- OVERHEAD MV CABLE
- OVERHEAD HV CABLE
- UNDERGROUND OVERHEAD CABLE
- UNDERGROUND LV CABLE
- UNDERGROUND MV CABLE

PROJECT NO.	20728_07_010_01
CLIENT	MCPARTLAND PLANNING
PROJECT NAME	CHISWELL GREEN LANE ST ALBANS
DATE	2023/07/01
SCALE	1:1000
STATUS	PRELIMINARY
DESIGNER	MFC
APPROVED BY	
DATE	

**MFC**  
 MFC CONSULTANTS LTD  
 100, THE SQUARE, ST ALBANS, HERTS, AL1 1AB  
 TEL: 01438 750000  
 WWW.MFCCONSULTANTS.CO.UK

---

Civil Engineering

---

Transport

---

Road Safety

---

Flood Risk & Drainage

---

Structures

---

Geo-Environmental

---

M-EC Acoustic Air

---

Utilities

---

M-EC Geomatics

---

Street Lighting

---

Expert Witness

---



Brighton Leicester

T: 01530 264 753  
group@m-ec.co.uk  
www.m-ec.co.uk