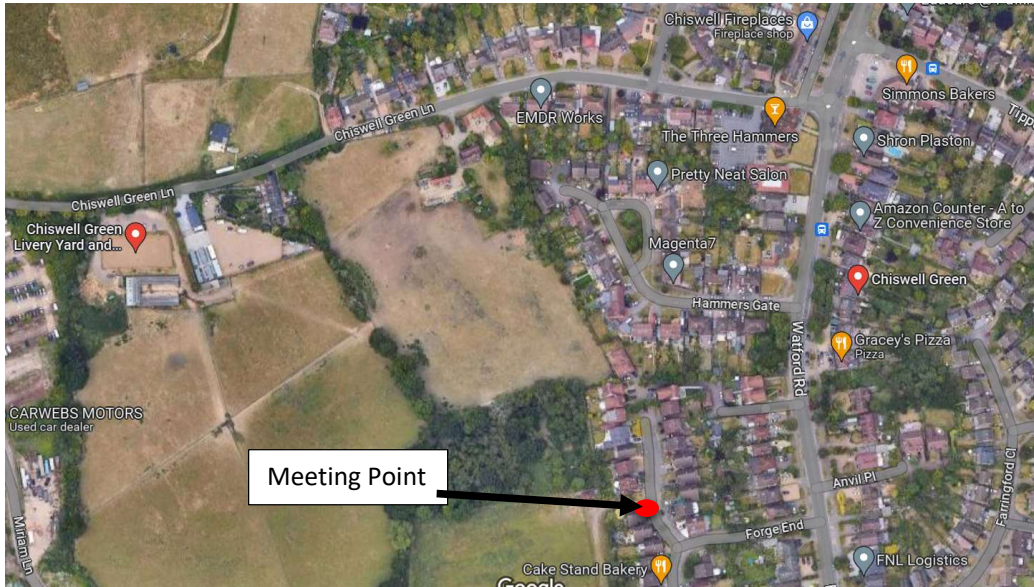


Appeal References: APP/B1930/W/22/3313110 & APP/B1930/W/22/3312277

Inspector's Site Visit – 10th May 2023 [9:30 am start time]

Agenda:

- a. Meet at the entrance gate into the southern part of the South Site, off Forge End - see map below:

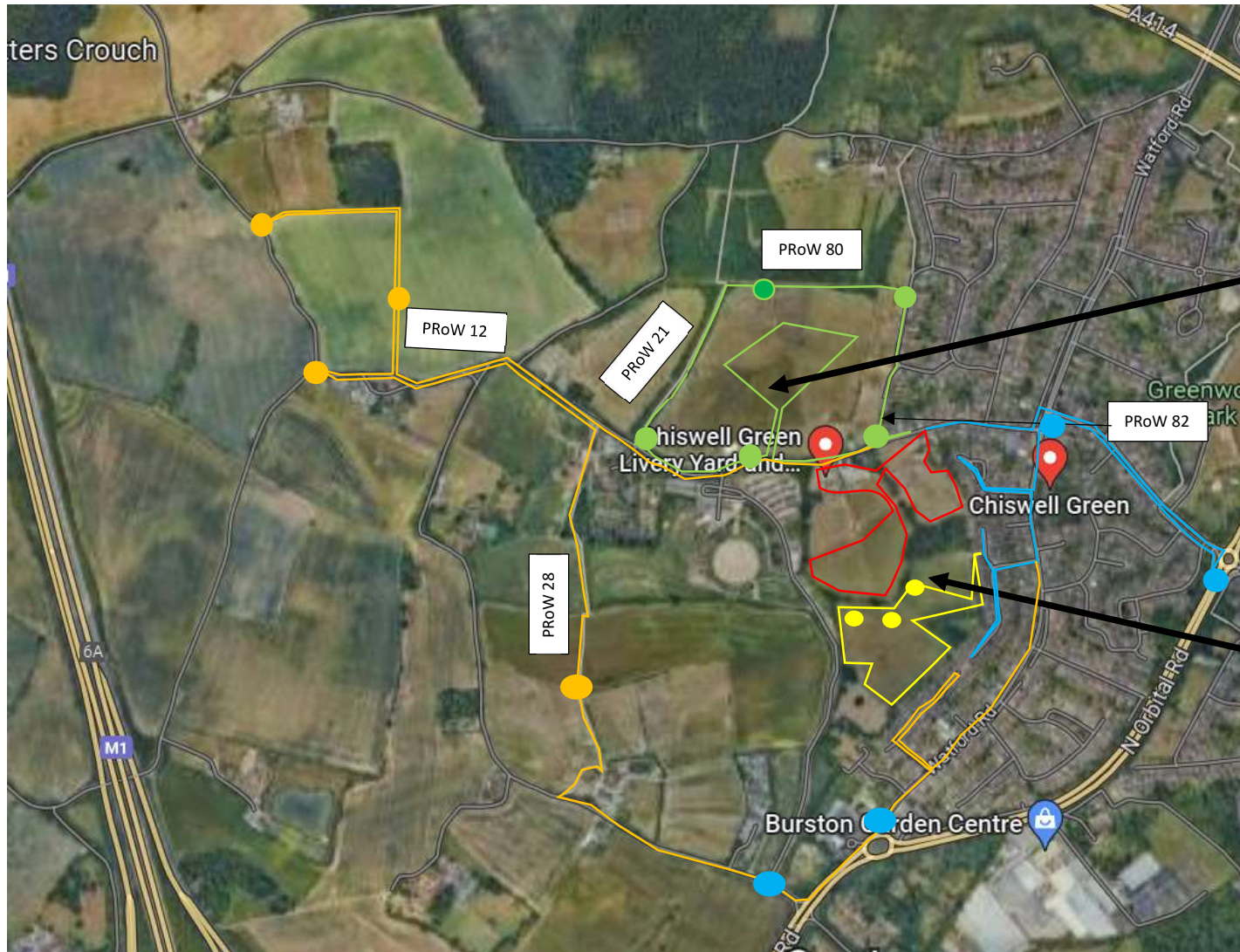


- b. The route to be taken on the site visit is set out on the map overleaf, illustrated using different coloured lines for the different routes in the following order:
- 1st Yellow Route (requested by South Site)
 - 2nd Blue Route (requested by KCG)
 - 3rd Red Route (requested by South Site)
 - 4th Green Route (requested by North Site)
 - 5th Orange Route (requested by Council) (blue dots requested by KCG)

KCG have requested that the Inspector views the South Site from within (or in the rear gardens of) the following properties (see separate note from KCG):

- | | | |
|--------------------|--------------------|---------------------------|
| • No. Long Fallow | • No. Hammers Gate | • No. Chiswell Green Lane |
| • No. Long Fallow | • No. Cherry Hill | • No. The Croft |
| • No. Rosedene End | • No. Forge End | |

- c. The site visit to, and around, the South site will take place first before the North site making sure to view the sites from the following locations (as illustrated on the map overleaf):
- d. Supporting Documents - It is recommended that the following illustrative material is reviewed during the Inspector's site visit:
- CD 3.19b POE Appendices of Miss Toyne LT-1 Illustrative Material
 - CD 3.19b POE Appendices of Miss Toyne LT-2 Appeal Site Appraisal Photographs
 - CD 3.19b POE Appendices of Miss Toyne LT-3 Appeal Site Context Photographs
 - CD 3.19b POE Appendices of Miss Toyne LT-4 2829 Realm Wirelines-HR
 - CD 3.19b POE Appendices of Miss Toyne LT-5 2829 Realm Photomontages



North Site

South Site