



Copyright of Turley
This drawing is for illustrative purposes only and should not be used for any construction or administrative purposes. It is not intended for planning application purposes only. No liability or responsibility is accepted arising from reliance upon the information contained within this drawing.
Plans reproduced by permission of Ordnance Survey on behalf of The Controller of Her Majesty's Stationery Office. © Crown Copyright and database right (2021). Ordnance Survey Licence number 1000520073.

KEY
□ Application boundary

Colney Heath Parish Council images



Land adjacent to Colney Heath Football Club, Planning Inquiry



PROJECT NUMBER: _____
TARC3006
DRAWING NUMBER: 4001 CHECKED BY: LN
REVISION: E STATUS: Submission
DATE: 26/01/2022 SCALE: 1:1000 @ A3



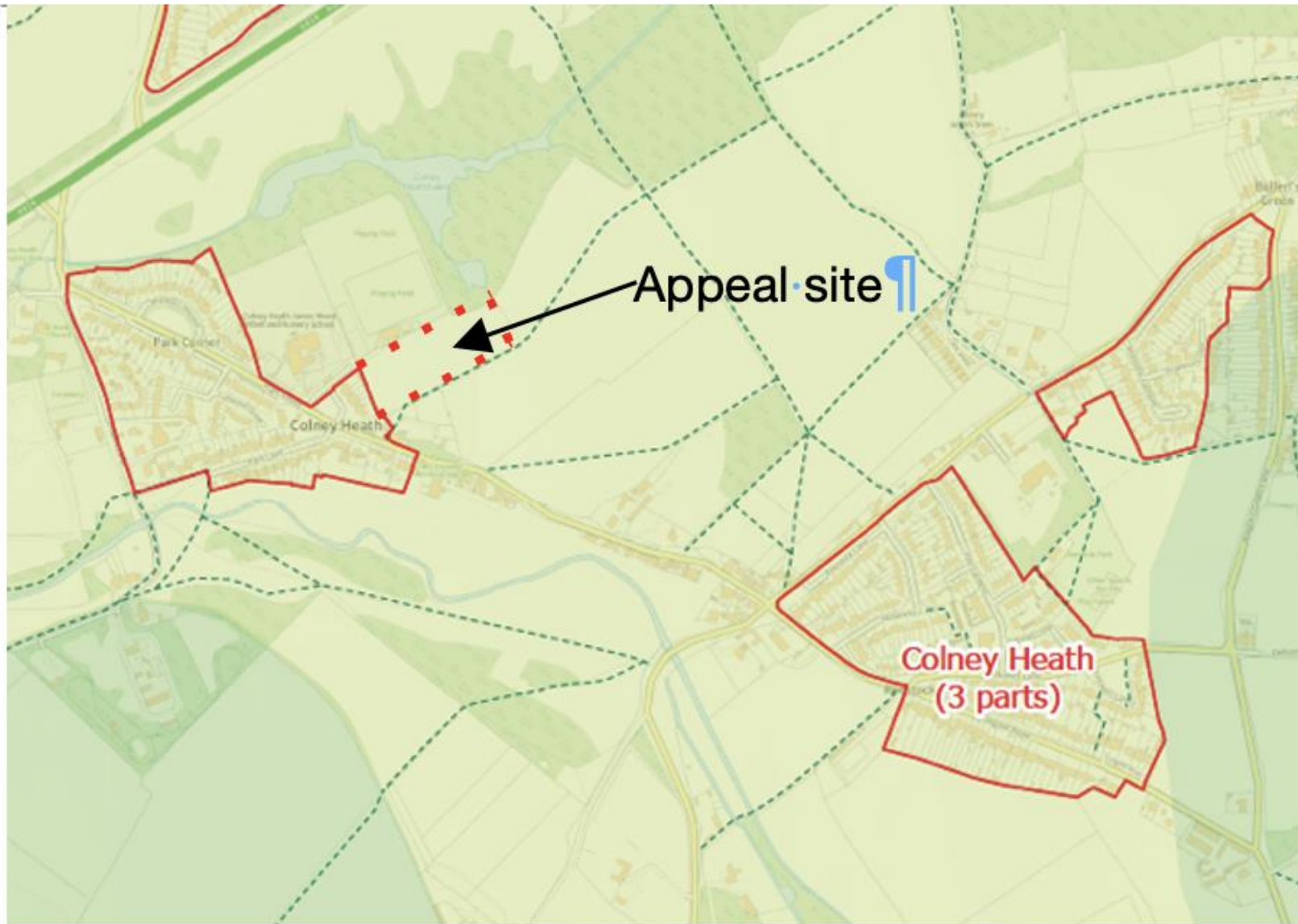


Figure 1 B Encroachment of the appeal site in to the open countryside



Figure 2: dimension of the encroachment beyond the settlement boundary

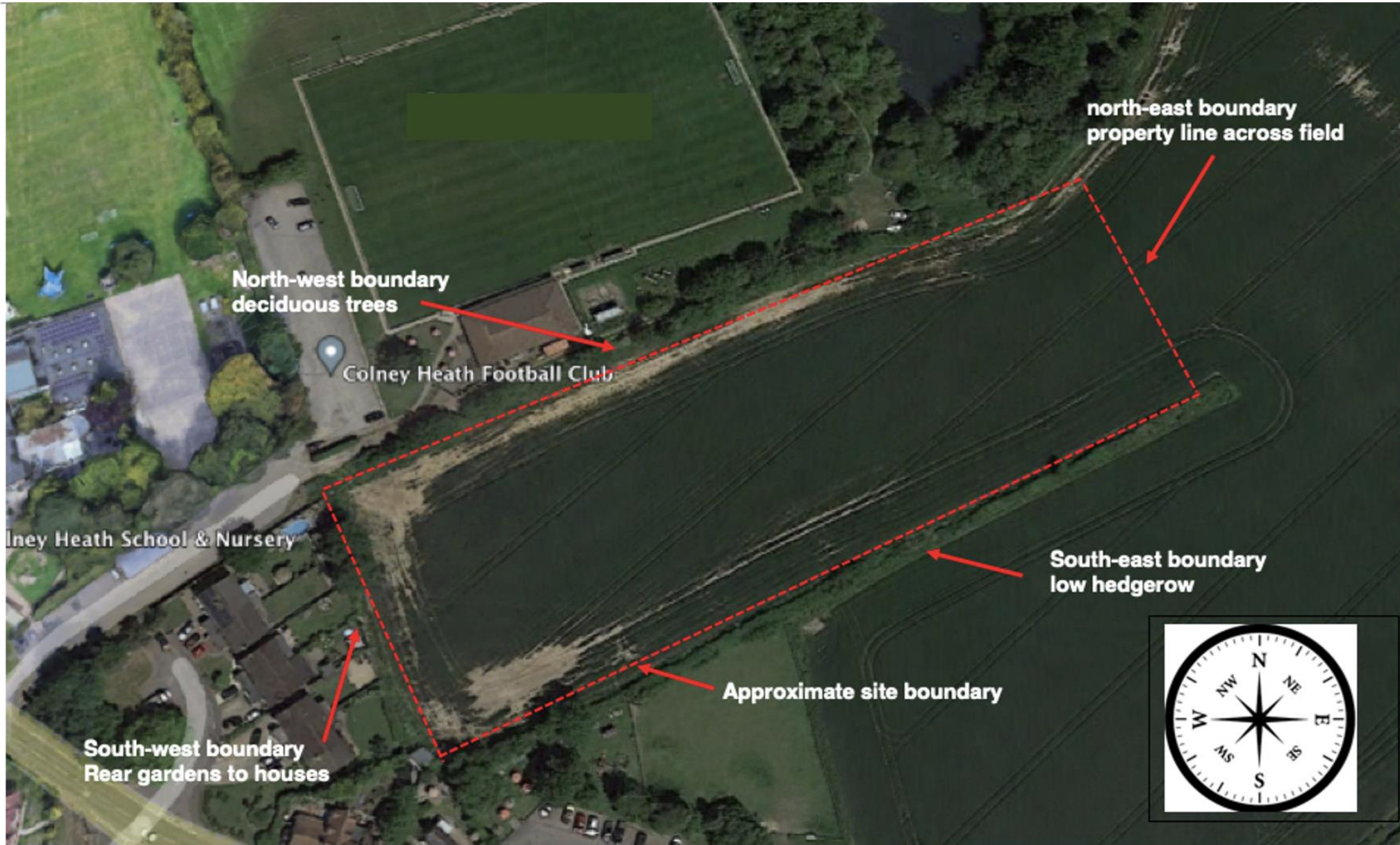


Figure 3: the nature of the edges of the site



Figure 4: view from beyond the north-east boundary of the site looking south-west



Figure 5: Current view from the garden of the Crooked Billet





Figure 6: Photomontage of the view in Figure 5 after completion of the development

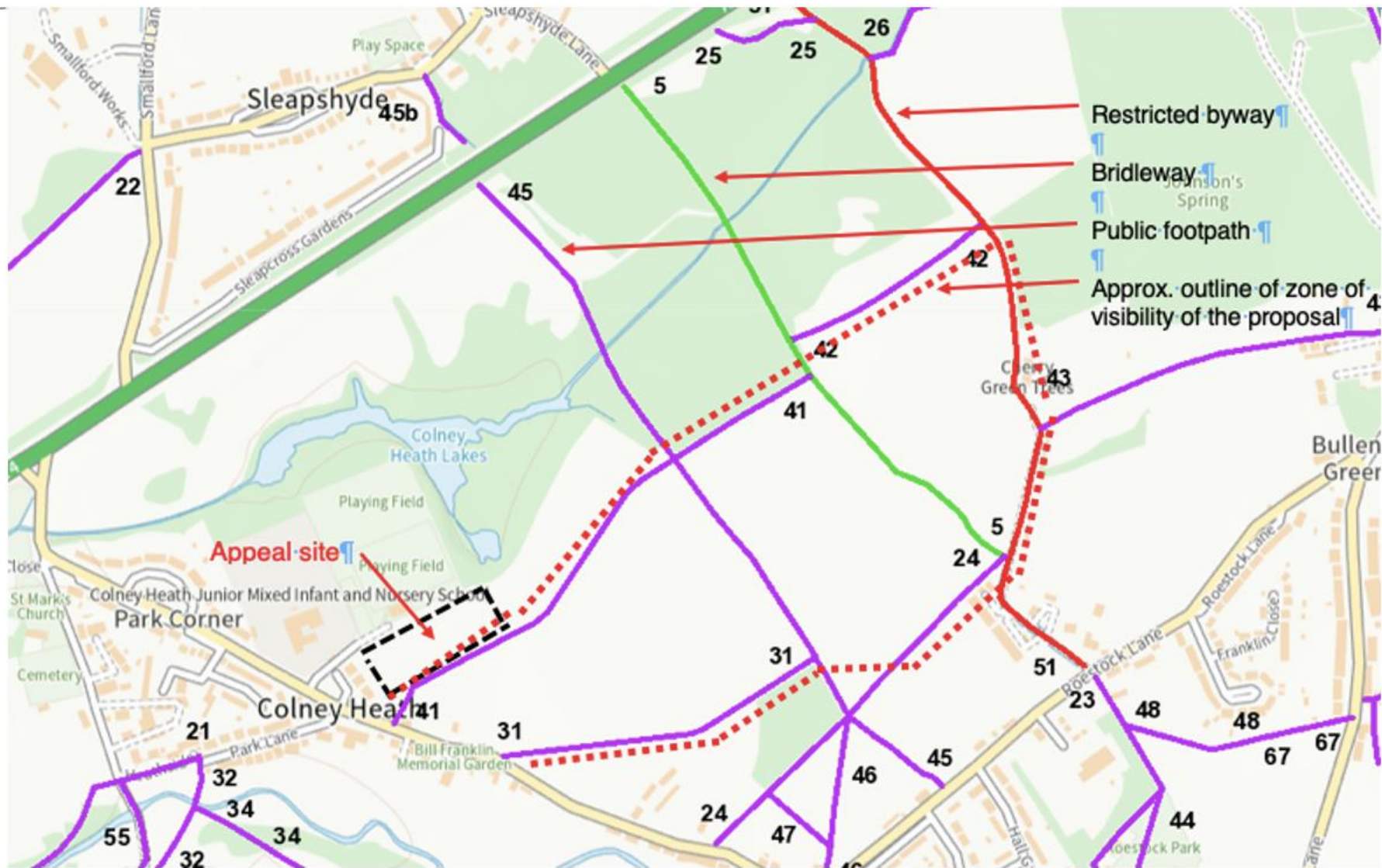


Figure 7: zone of visibility of the site (outlined in red) from PROWs



Figure 8: positions of photographs taken for photomontages



Figure 9 A: view of the site from position A looking east across the open countryside



Figure 9 B: photomontage of the proposal from position A



Figure 10 A: view of the site from position B looking south-west



Figure 10 B: photomontage of the proposal from position B



Figure 11 A: view of the site from position C



Figure 11 B: photomontage of the proposal from position C



Figure 13: aerial view of the computer model created for photomontages

