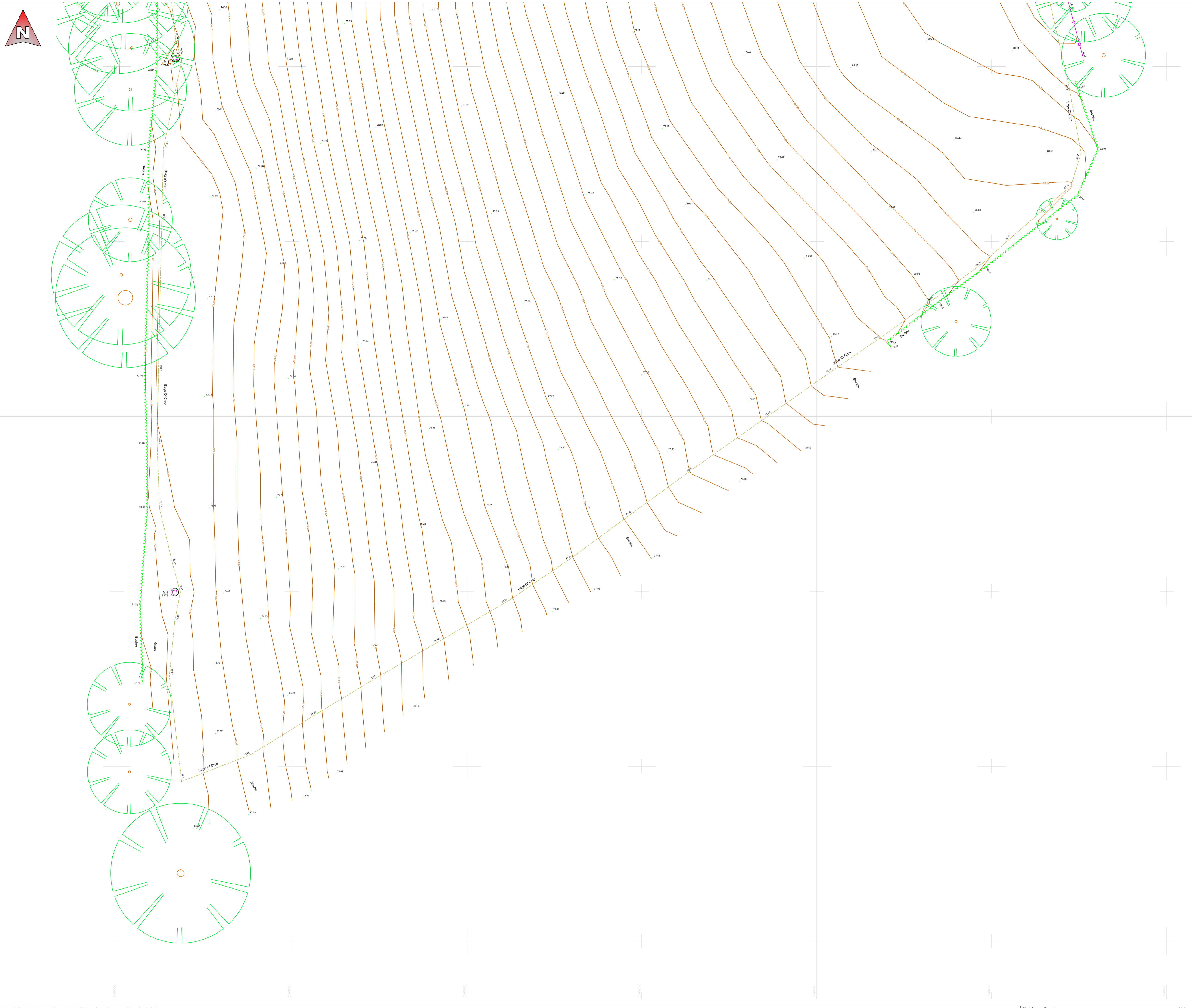
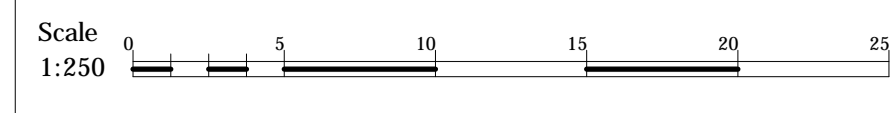
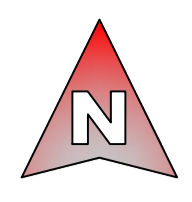


File Path: D:\Workarea\Scott Properties\2219-2436 - Land West of Watling Street, St Albans.dwg  
 Plot Date: 05 October 2020 Plot Style: BB Surveys Std.ctb Saved By: Barry on 05 October 2020



**BBS- BB- EGL- SU- 05**  
 Originator Initials Detail Type Number  
 - - - - -



**Notes:**

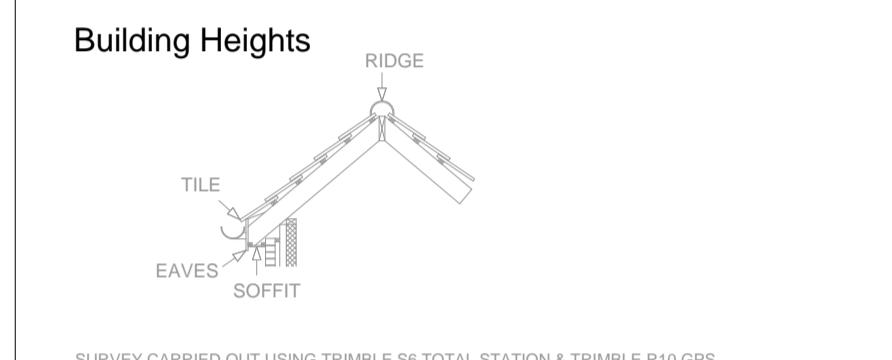
AV Air Valve	FH Fire Hydrant	SP Sign Post
BB Bottom Bank	FP Footpath	STAY Stay
BH Bore Hole	G Gully Grate	SV Sluice Valve
BL Lit Bollard	GV Gas Valve	TAC Tactile Paving
BOL Bollard	H Hedge	TB Top Bank
BIN Bin	IC Inspection Cover	TBOX Telephone Box
BS Bus Stop	IL Invert Level	TL Traffic Light
Bushes Bush	KO Kerb Outlet	TK Top Of Kerb
BT BT Box	LP Lamp Post	TP Telegraph Pole
CAB Cabinet	MH Manhole	TRK Track
CHNL Channel	MP Marker Post	TS Traffic Sign MH
CL Centreline	NB Name Board	VENT Vent
CONEC Concrete	PW Partition Wall	W Water Cover
COL Column	PB Post Box	WL White Line
DB Dish Bottom	PM Parking Meter	WO Wash Out
DCHNL Drainage Channel	PO Post	YL Yellow Line
Door Door	RE Rodding Eye	
EEB Electric MH Cover	Ridge Ridge Level	
EP Electric Pole	RP Reflector Post	
ER Earth Road	RS Road Sign	
ET EPT-Transformer	SETTS Granite Setts	
Feeder Feeder Pillar	SF Safety Fence	
FCB Close Boarded	FCB Chain Link	Control Station
FCL Hoarding	FCB Metal Fence	Column
FPL Palisade	FCB Post & Rail	xxx Floor to Ceiling Height
FPR Post & Wire	FCB Post & Wire	xxx Floor to False Ceiling Height
RAIL Railings		

**Features**

Fences	FCB 1.8m	
Walls	Wall 1.2m	
Hedges	Hedge 1.2m	Average root line shown.
Overhead Line	Overhead Line	Indicative position of cables.

**Services**

Foul Sewers	0.225m	0.3m MH	Pipe position and alignment is indicative only.
Storm Sewers	0.375m	0.6m MH	



SURVEY CARRIED OUT USING TRIMBLE S6 TOTAL STATION & TRIMBLE R10 GPS.  
 THE SURVEY HAS BEEN ACCURATELY POSITIONED ON THE ORDINANCE SURVEY NATIONAL GRID SYSTEM USING GPS OBSERVATIONS TO THE OS ACTIVE NETWORK AND THE LATEST ORDINANCE SURVEY TRANSFORMATION (OSTN15/OSGM15).  
 LOCAL SCALE FACTOR HAS BEEN REMOVED TO TRANSFORM THE SURVEY TO A FLAT EARTH GRID (SCALE FACTOR 1.0000).  
 ALL LEVELS RELATE TO ORDINANCE SURVEY DATUM (NVL1990). VERTICAL CONTROL HAS BEEN ESTABLISHED USING GPS OBSERVATIONS TO THE OS ACTIVE NETWORK AND THE LATEST ORDINANCE SURVEY TRANSFORMATION (OSTN15/OSGM15).  
 ALL DIMENSIONS ARE IN METRES UNLESS OTHERWISE STATED.  
 ANY CRITICAL DIMENSIONS AND MEASUREMENTS SHOULD BE BASED ON THE ORIGINAL DIGITAL DATA AND CONFIRMED WITH BB SURVEYS LTD.  
 ANY ERRORS SHOULD BE NOTIFIED TO BB SURVEYS LTD.  
 NO ATTEMPT HAS BEEN MADE TO ENTER ANY CONFINED SPACES ON THIS SITE. WE HAVE MEASURED INVERT DEPTHS, ESTIMATED PIPE SIZES AND SHOWN THE DIRECTION OF FLOW ONLY WHERE DRAIN RUNS ARE ACTIVE AT THE TIME OF SURVEY. INSPECTION COVERS WHICH WE WERE UNABLE TO LIFT BY MANUAL METHODS ARE DENOTED AS MH (UTL). WE DID NOT QUOTE FOR THE USE OF HYDRAULIC LIFTING EQUIPMENT.  
 DRAINAGE RUNS BETWEEN INSPECTION COVERS HAVE NOT BEEN INVESTIGATED. ANY SHOWN ARE ESTIMATED AND NOT CONFIRMED. ALL DRAINAGE RUNS SHOULD BE PROVED BY DYE TRACING AND IF NECESSARY BY RADIO DETECTION METHODS PRIOR TO ANY DESIGN WORK.  
 ALL PIPE SIZES AND CONNECTIONS SHOULD ALSO BE CONFIRMED WITH YOUR LOCAL DRAINAGE AUTHORITY PRIOR TO ANY DESIGN WORK.  
 THERE MAY BE INSPECTION COVERS ON SITE WHICH WERE NOT VISIBLE AT THE TIME OF SURVEY. THEY MAY HAVE BEEN BURIED OR COVERED BY VEGETATION. YOU SHOULD CONSULT YOUR LOCAL DRAINAGE AUTHORITY OR COMMISSION A CCTV DRAINAGE SURVEY TO ENSURE THAT YOU LOCATE ANY MISSING COVERS OR DRAINAGE RUNS.

REV	Date	Created By	Comments
-	03.10.20	BB	First Issue

Scale at A1	Project Number
<b>1:250</b>	<b>2219-2436</b>



**1 Chestnut Place, Cringleford**  
**Norwich, Norfolk NR4 7BD**  
 t: 01603 507917  
 m: 07786 388175  
 e: barry@bbsurveys.co.uk

Client  
**Scott Properties**

Project  
**Land West of Watling Street**  
**St Albans**

Title  
**Existing Ground Level Survey**  
**Sheet 5**

**BBS- BB- EGL- SU- 05** -  
 Originator Initials Detail Type Number Revision