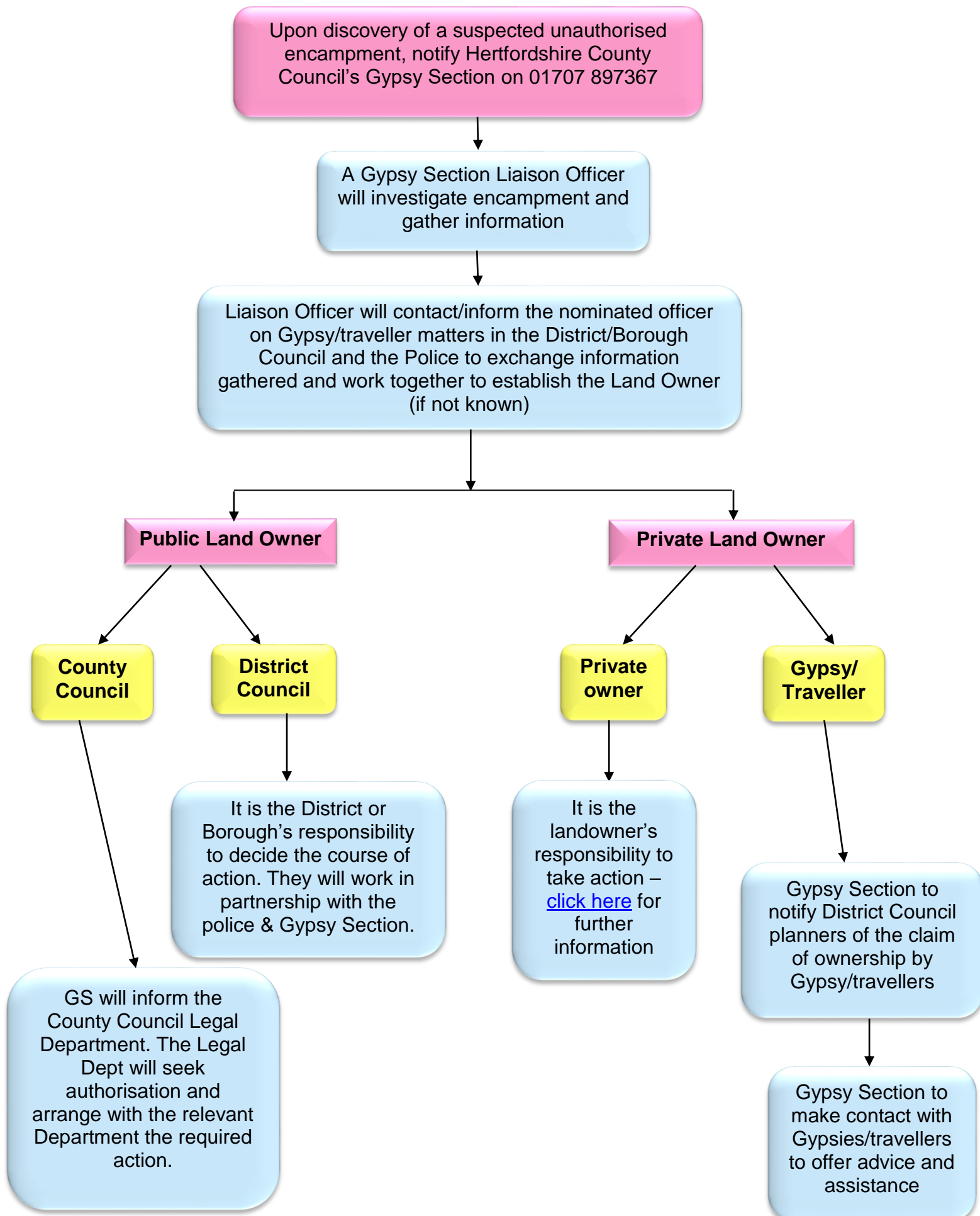


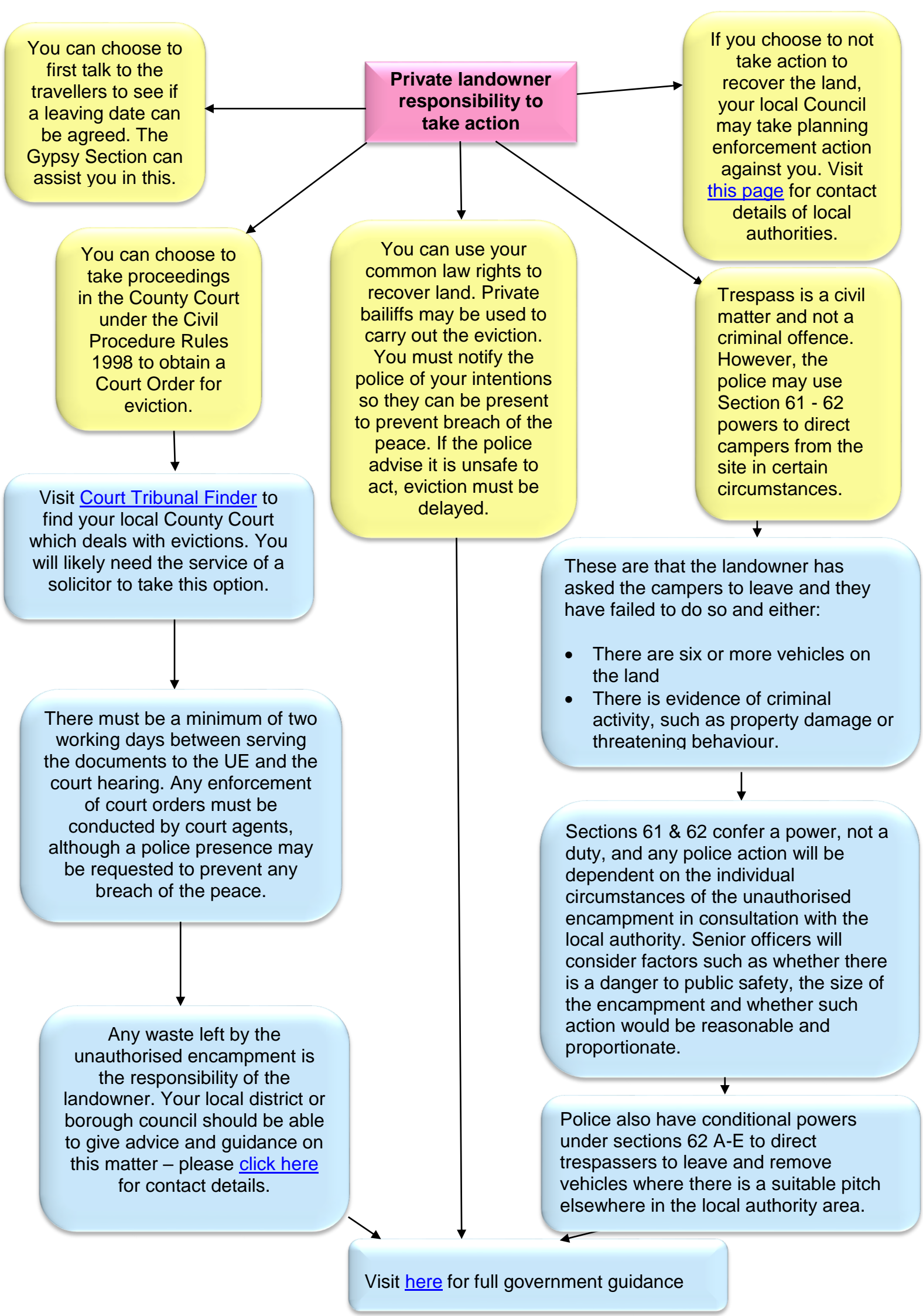
Public guidance on unauthorised encampments in Hertfordshire

This guidance document gives a brief overview on what members of the public, including landowners, can do if they discover an **unauthorised encampment** anywhere in Hertfordshire, what their legal options are and who they can turn to for advice and/or assistance.

As it is an overview, the information provided here is not exhaustive, but contact details are provided for organisations that can give specialised guidance in different situations.







Preventative measures for private landowners (originally produced by Broxbourne Council)

NOTE: Landowners should make sure they have the necessary planning permissions before implementing any of these measures.

Introduction

Being the victim of unauthorised access onto your land can be both a major nuisance as well as a costly experience, particularly in having to clear up any waste that is usually left behind.

Site protection measures outlined below will not guarantee unauthorised access, but will make your land less inviting.

A – Mounding



Having either a mound or a ditch makes it difficult for a vehicle and trailer/caravan to gain access without risking damage to the vehicles.

It can also help in limiting joy-riders vehicles being abandoned on your land.

Mounds are generally formed using rubble/subsoil as a base, with a suitable topsoil finish for either grass seeding/planting.

B – Height Barrier

A secured height barrier will restrict access to vehicles over 1.8m high. By also using toughened steel padlocks and 'boxing' in the connection, you will make it more difficult for access to be gained.

If this is coupled with a metal field gate it will also help to restrict access for joy-riders etc.



C – Gates

A strong, robust gate will help deter access. The gate will need to be able to be secured with a toughened padlock.



Metal gates/barriers are more desirable than wooden gates.

D – Fencing/Barriers (> 1.8m)

There are many different types of fencing available.

The most robust is steel palisade, as shown in the above photo as part of a gate.

Euroguard fencing as shown opposite is also a strong barrier.

Wooden close-board fencing generally looks better but is more vulnerable to damage and vandalism.



E – Fencing/Barriers (<1m)

Metal posts and rails are more robust than similar wooden styles.



Wooden/metal/concrete posts will deter informal access, but will not be sufficient to deter those more intent on gaining access.



Contact details for advice and guidance on gypsies and travellers

Organisation	Website information on unauthorised encampments	Phone number for unauthorised encampments advice
Hertfordshire County Council (Gypsy Section)	Available here	01707 897 367
Three Rivers District Council	Available here	01923 776611 – Asset and Property Management
Dacorum Borough Council	Available here	01442 228 671 – Planning Enforcement department
Stevenage Borough Council	Available here	01438 242 242
St Albans District Council	Available here	01727 866 100 Out of hours: 01727 811 155
East Herts District Council	Available here	01279 655 261
Hertsmere District Council	Available here	020 8207 2277 –Planning Out of hours: 0845 300 0021
Welwyn Hatfield Borough Council	Available here	01707 357410
Watford Borough Council	Available here	01923 226400
Broxbourne Borough Council	Advice above	01992 785 564
North Herts District Council	Available here	01462 474000
Hertfordshire Constabulary	See above	101 for advice and guidance 999 in an emergency