

## Tree Preservation Order

### Town and Country Planning Act 1990

### The St Albans City and District Council Tree Preservation Order No 1646 Oak Farm, Coopers Green Lane, 14 October 2016,

The St Albans City and District Council, in exercise of the powers conferred on them by section 198 of the Town and Country Planning Act 1990 make the following Order—

#### Citation

1. This Order may be cited as TPO 1646, Oak Farm, Coopers Green Lane 2016.

#### Interpretation

- 2.— (1) In this Order “the authority” means the St Albans City and District Council.  
(2) In this Order any reference to a numbered section is a reference to the section so numbered in the Town and Country Planning Act 1990 and any reference to a numbered regulation is a reference to the regulation so numbered in the Town and Country Planning (Tree Preservation)(England) Regulations 2012.

#### Effect

- 3.— (1) Subject to article 4, this Order takes effect provisionally on the date on which it is made.  
(2) Without prejudice to subsection (7) of section 198 (power to make tree preservation orders) or subsection (1) of section 200 (tree preservation orders: Forestry Commissioners) and, subject to the exceptions in regulation 14, no person shall—
  - (a) cut down, top, lop, uproot, wilfully damage, or wilfully destroy; or
  - (b) cause or permit the cutting down, topping, lopping, uprooting, wilful damage or wilful destruction of,

any tree specified in the Schedule to this Order except with the written consent of the authority in accordance with regulations 16 and 17, or of the Secretary of State in accordance with regulation 23, and, where such consent is given subject to conditions, in accordance with those conditions.

#### Application to trees to be planted pursuant to a condition

4. In relation to any tree identified in the first column of the Schedule by the letter “C”, being a tree to be planted pursuant to a condition imposed under paragraph (a) of section 197 (planning permission to include appropriate provision for preservation and planting of trees), this Order takes effect as from the time when the tree is planted.

Dated this day 14 October 2016

[Signed on behalf of the St Albans City and District Council

  
.....

Authorised by the Council to sign in that behalf]

CONFIRMATION OF ORDER

[This Order was confirmed by St Albans City and District Council without modification on the day of 11 JANUARY 2017  
2016

OR

~~[This Order was confirmed by the St Albans City and District Council, subject to the modifications indicated by \_\_\_\_\_, on the \_\_\_\_\_ day of 2016.~~

[Signed on behalf of the St Albans City and District Council

  
.....

Authorised by the Council to sign in that behalf]

[DECISION NOT TO CONFIRM ORDER

[A decision not to confirm this Order was taken by St Albans City and District Council on the day of \_\_\_\_\_ 2016

[Signed on behalf of the St Albans City and District Council

.....

Authorised by the Council to sign in that behalf]

[VARIATION OF ORDER

[This Order was varied by the St Albans City and District Council on the \_\_\_\_\_ day of 2016 by a variation order under reference number *[insert reference number to the variation order]* a copy of which is attached]

[Signed on behalf of the St Albans City and District Council

.....

Authorised by the Council to sign in that behalf]

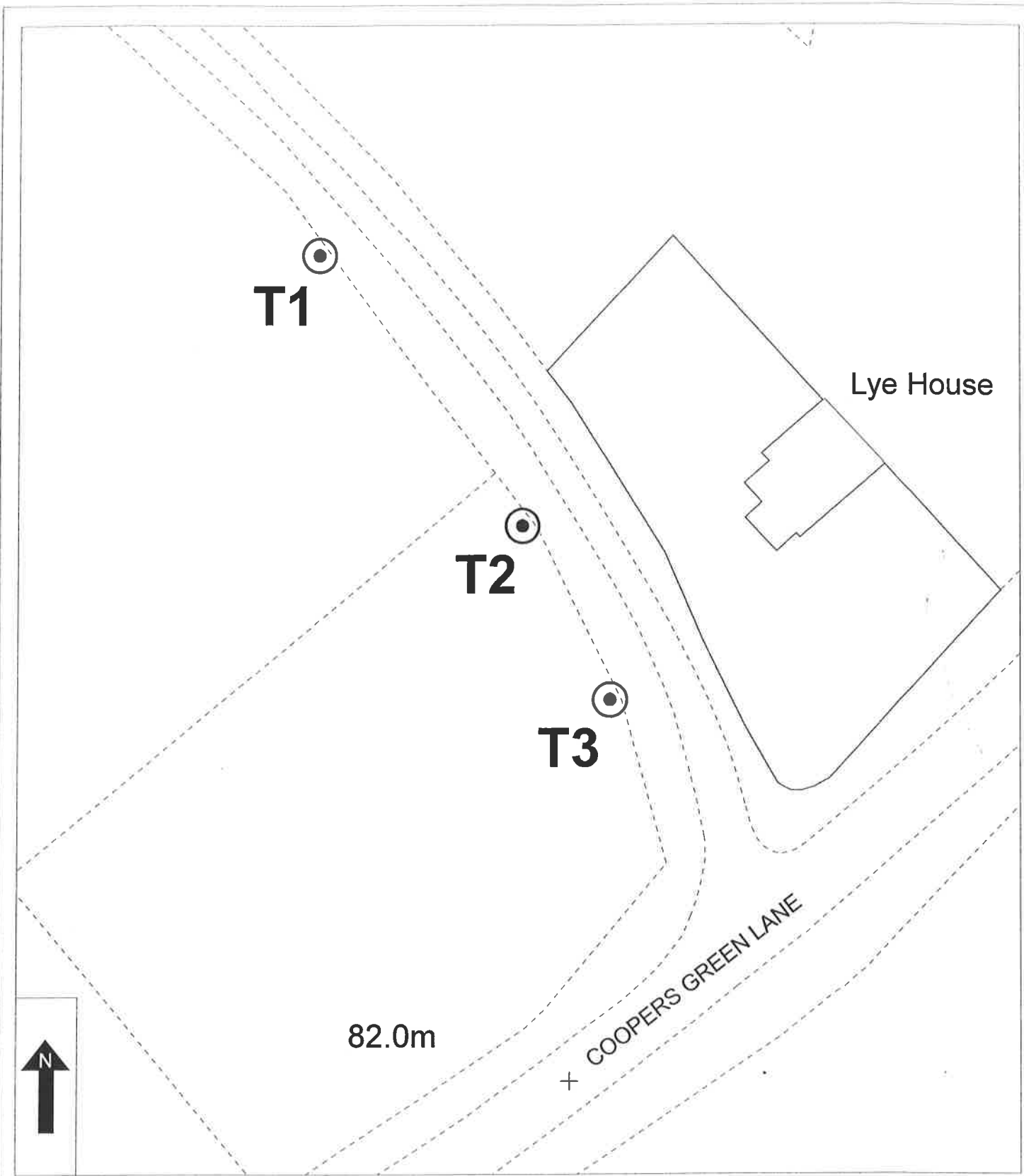
[REVOCATION OF ORDER

[This Order was revoked by the St Albans City and District Council on the \_\_\_\_\_ day of 2016

[Signed on behalf of the St Albans City and District Council

.....

Authorised by the Council to sign in that behalf]



Location: Oak Farm, Coopers Green Lane, St Albans

Schedule: Tree Preservation Order No. 1646

Individual Trees: T1 Oak, T2 Oak, T3 Oak

Groups: None

Areas: None

Woodlands: None

 **St Albans**  
City & District Council

Dated this 14 October 2016



Authorised by the Council to sign in that behalf

# SCHEDULE

## SPECIFICATION OF TREES

---

### Trees specified individually (encircled in black on the map)

Reference on map	Description	Situation
T1	Oak	Front Field, running parallel to driveway
T2	Oak	Front Field, running parallel to driveway
T3	Oak	Front Field, running parallel to driveway

---

### Trees specified by reference to an area (within a dotted black line on the map)

Reference on map	Description	Situation
None		

---

### Groups of trees (within a broken black line on the map)

Reference on map	Description	Situation
None		

---

### Woodlands (within a continuous black line on the map)

Reference on map	Description	Situation
None		